

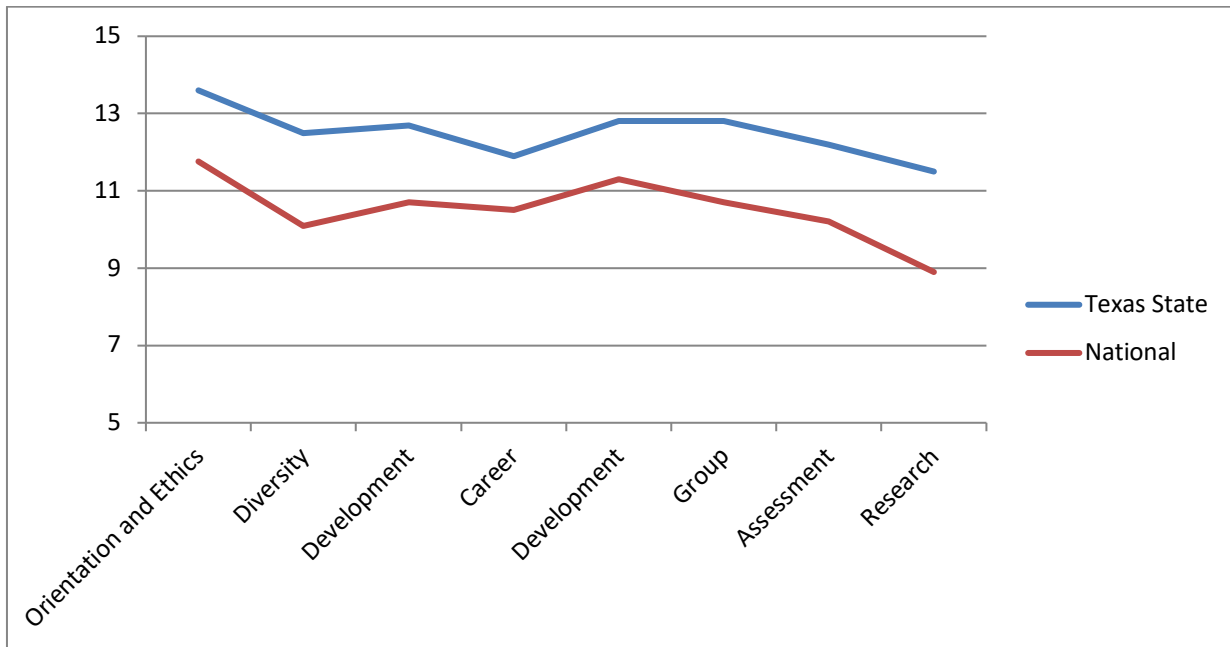
CPCE Results Summary 2020-2022

Students in the Professional Counseling Program at Texas State University are required to take the CPCE prior to beginning Clinical Practicum and are allowed three attempts to pass. In the data below, results are provided based on the number of attempts, not students. Thus, 50 attempts in a year could represent a lower number of students if some students had to retake the exam.

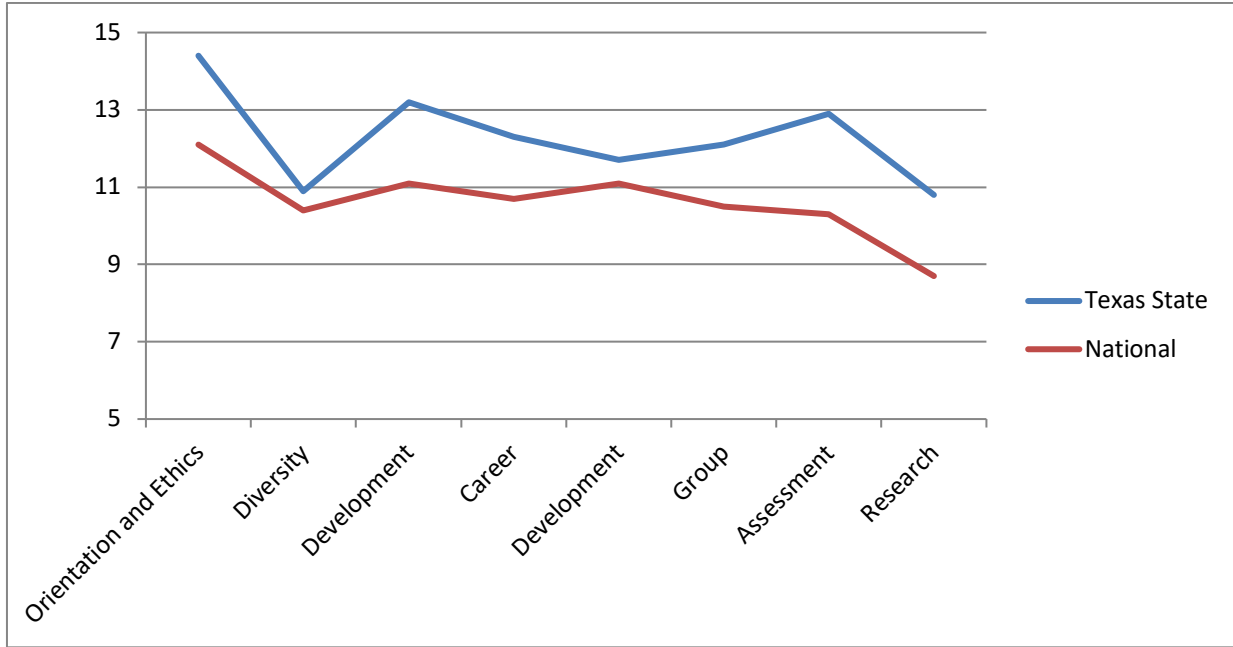
2020 CPCE Results Summary:

For the three administrations, Texas State University had 61 exam attempts with 52 passes. The mean scores for Texas State students were better than the national sample (universities that use the test as an exit exam) on EVERY subscale covered on the exam.

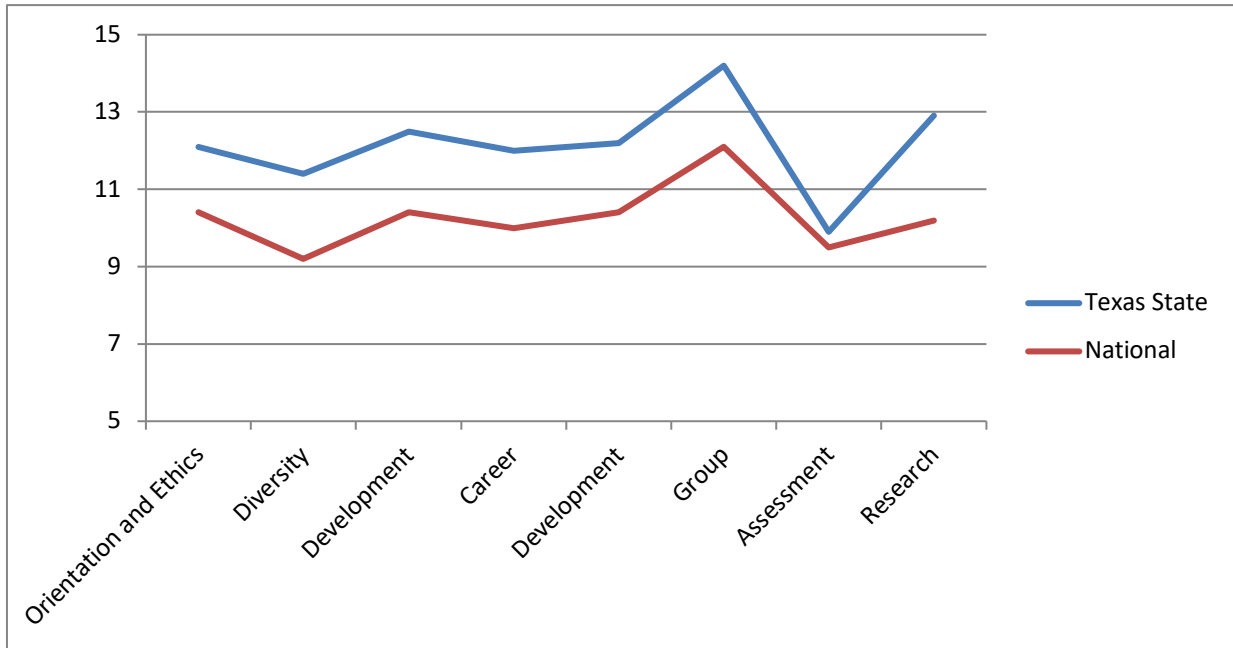
Spring 2020 CPCE Results



Summer 2020 CPCE Results



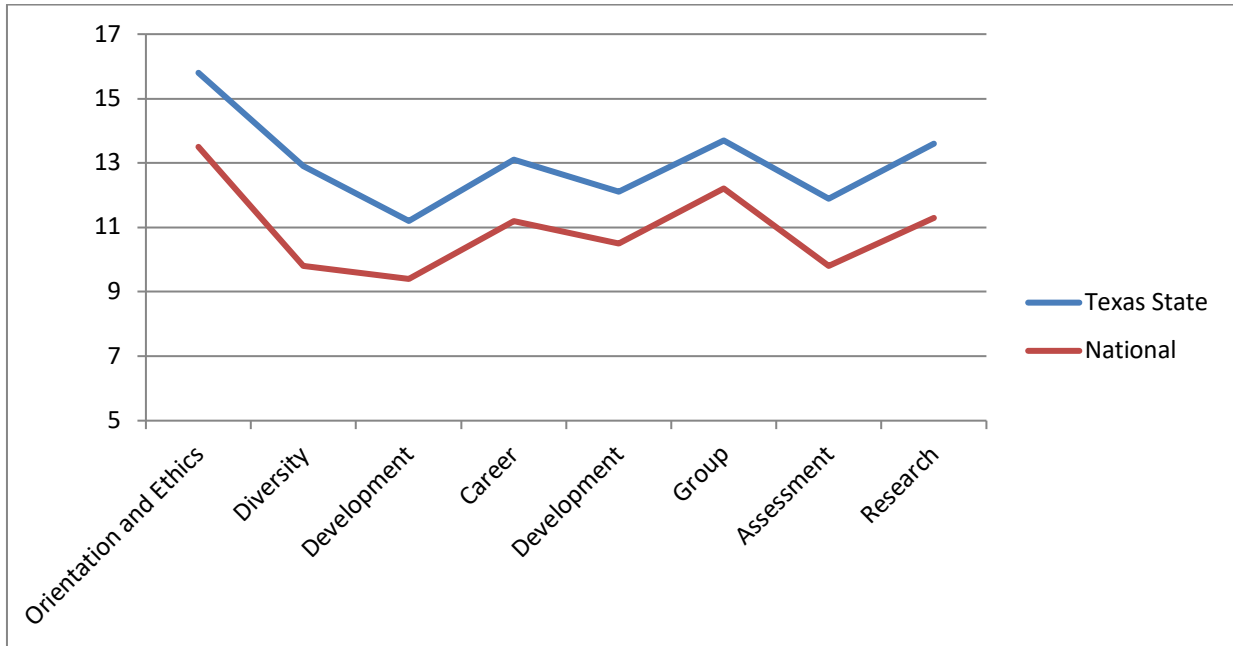
Fall 2020 CPCE Results



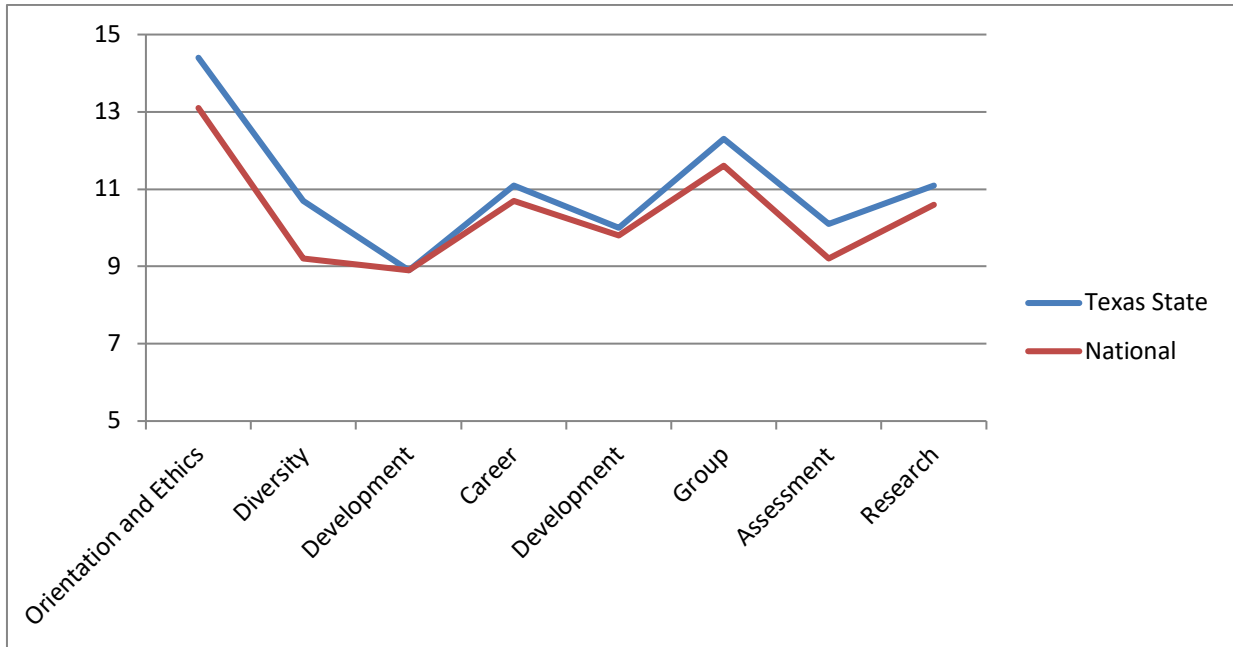
2021 CPCE Results Summary:

For the three administrations, Texas State University had 81 exam attempts with 65 passes. The mean scores for Texas State students were better than the national sample (universities that use the test as an exit exam) on almost every subscale covered on the exam.

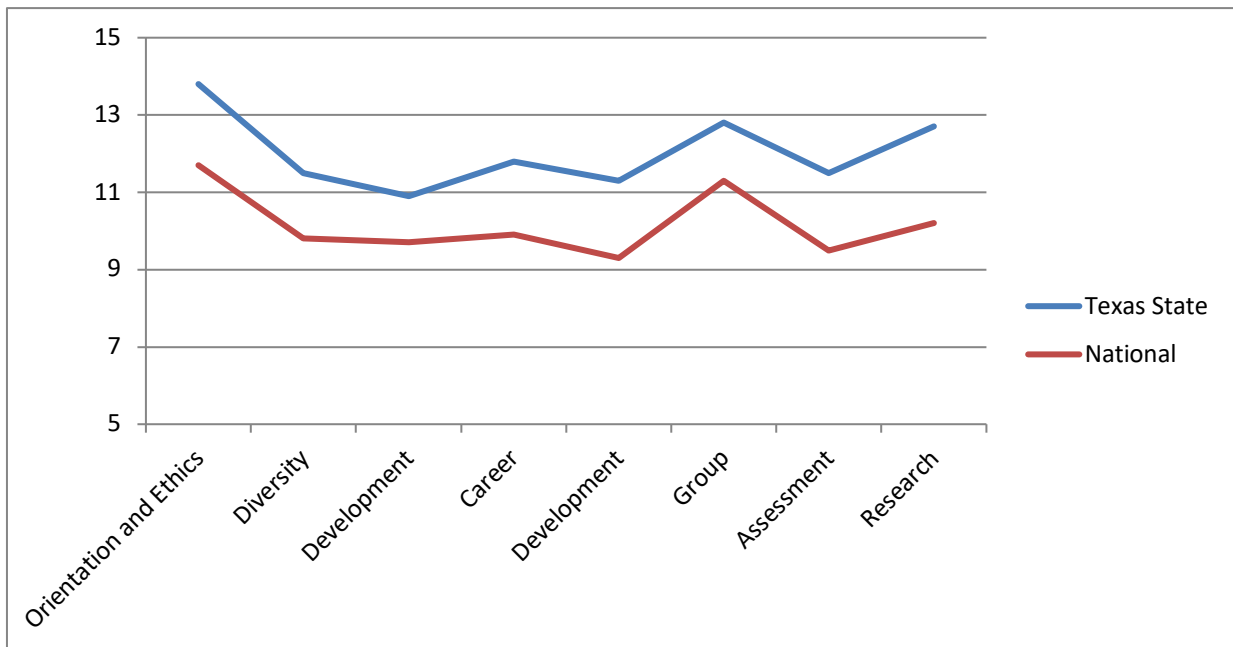
Spring 2021 CPCE Results



Summer 2021 CPCE Results



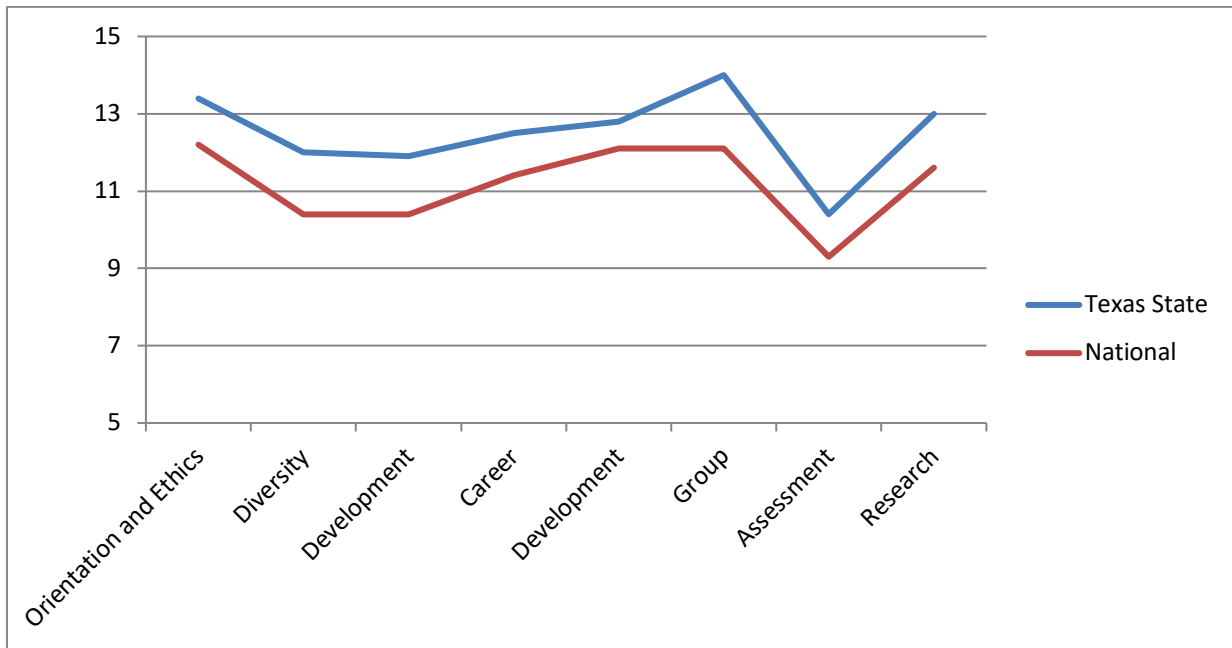
Fall 2021 CPCE Results



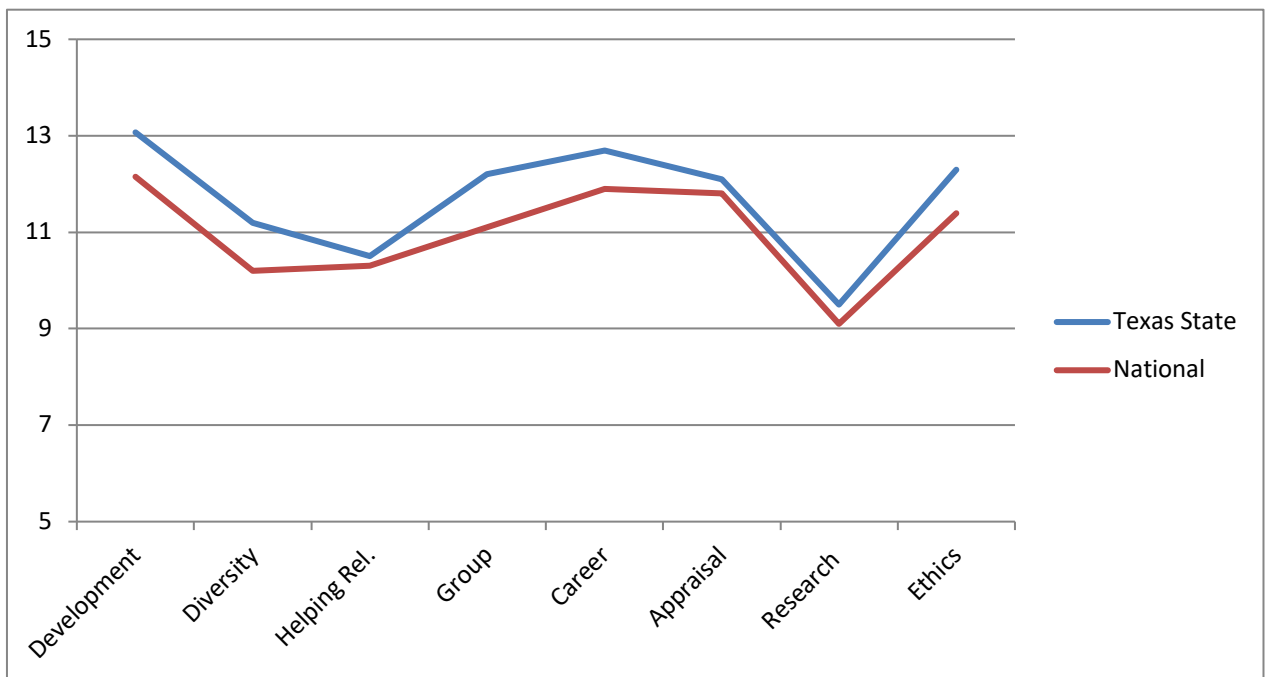
2022 CPCE Results Summary:

For the three administrations, Texas State University had 36 exam attempts with 25 passes. The mean scores for Texas State students were better than the national sample (universities that use the test as an exit exam) on EVERY subscale covered on the exam. Summary only includes *Spring and Summer*; *Fall 2022 results have not been sent to TXST at the time of this report.*

Spring 2022 CPCE Results



Summer 2022 CPCE Results



Fall 2022 CPCE Results - Pending