

TEXAS STATE  
UNIVERSITY -  
SAN MARCOS

DEPARTMENT  
OF GEOGRAPHY

TEXAS STATE  
UNIVERSITY  
SAN MARCOS  
*The rising STAR of Texas*



# GeoNews

Volume 18

Spring 2012

## Inside this issue:

Greetings from the  
Chair... 2

Alumni Focus 3

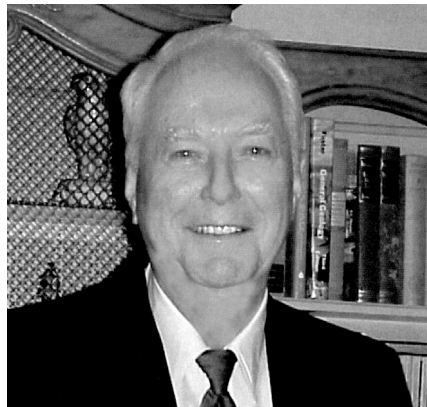
Faculty News 6-8

From the Graduate  
Coordinator 9

Graduate Student  
Activity & Awards 10-11

Undergraduates &  
Student  
Organizations 18-19

Alumni Reunion  
Registration Form 21



## In Remembrance, Dr. Allen D. Hellman

Dr. Hellman died Dec. 29, 2011, in San Marcos at the age of 90. He was born in Dollar Bay, MI, on Nov. 29, 1921. He grew up in Lansing, MI, where he won the Michigan state high school swimming championship in 1939. He served five years as a naval aviator in the Pacific theater during World War II. After the war, he remained active as a member of the U.S. Navy Reserve and he became an air photo interpretation officer instructing officers in the use of aerial photography and other space imagery until his retirement from the Reserves in 1978.

After his discharge from the Navy in 1946, Hellman entered Michigan State University on the GI Bill. He earned his B.A. in Geography at Michigan State in 1949 and his M.A. in Geography in 1950. He then began work on his Ph.D. in Geography at the University of Michigan, where he completed his doctorate in 1962. From 1956 to 1966, Hellman served as Assistant and Associate Professor at the University of Southwestern Louisiana. His teaching responsibilities included cartography, aerial photo interpretation, planning, world, and regional geography. In 1966, Hellman joined the faculty at Texas State University-San Marcos as Professor and Chair of the Department of Geography. As Department Chair, Hellman laid down the foundations which led to the Department's current status as one of the country's premier departments of geography. He stepped down as Chair in 1977 and remained on the geography faculty until his retirement in 1984.

*Hellman continued on page 15*

**2012 National Council for  
Geographic Education (NCGE)  
Annual Meeting**  
*(see page 16)*

★ **Deep in the Heart of Geography** ★  
**OCTOBER 5TH-7TH 2012**  
**SAN MARCOS, TX**



Dr. David Butler on the Great Wall of  
China at Badaling,  
August 2011

## Regents' Professor David Butler presents in China

Regents' Professor Dr. David Butler was invited by Professor Zahao Shen of Peking University to be a featured speaker in a Special Symposium on Topographic Effects on Landscape Complexity and Sustainability, at the 8<sup>th</sup> World Congress of the International Association of Landscape Ecology (IALE), in Beijing, China, August 19, 2011. Prior to

*Butler continued on page 15*



## Greetings from the Chair... Dr. Philip Suckling, Professor and Chair

Texas State continues to set record enrollments with no change in sight – anticipated enrollment five years from now could reach 40,000 students. Geography is implementing strategies to serve and control our large number of majors with more stringent course prerequisite requirements and enhanced admission requirements for our graduate programs. The goal is to increase quality of our programs while maintaining the largest geography programs in the nation.

We welcomed Dr. Sarah Blue (PhD 2004, UCLA) last fall as a new Assistant Professor with specialization in human geography with a focus on migration and Latin America. Sarah has specific research interests involving Cuba – she is currently developing a new study abroad program with anticipated initiation in summer 2013. Dr. Blue taught at the University of Northern Illinois before joining our department.

Last year, we lost three faculty members to resignations. In two cases, the colleagues were “head hunted” (i.e. they were not actively on the job market). This suggests that our department has strong faculty members that garner attention from other universities. We conducted four searches for new faculty members in recent months. Dr. Injeong Jo (PhD 2011, Texas A&M University) will join the faculty this fall as Assistant Professor with specialization in geographic education. Injeong is currently completing a post-doctoral fellowship at the University of Texas-Arlington. Dr. Kimberly Meitzen (PhD 2011, University of South Carolina) will join the faculty in fall 2013 as Assis-

tant Professor with specialization in fluvial geomorphology and biogeography. Kim is currently undertaking a post-doctoral fellowship with the Nature Conservancy which runs through summer 2013. Unfortunately, the other two searches did not have successful results so we will regroup for next year.

I'm pleased to note that our growing geology undergraduate minor will be gaining solid staffing beginning Fall 2012. In addition to Dr. Rene DeHon, Senior Lecturer, we will now have two additional permanently-funded positions. Jon Wagner has been elevated from a part-time lecturing role to full-time Senior Lecturer and Barbara Grahmann's temporary program faculty position as Lab Coordinator/Instructor has been permanently funded. These appointments will provide much needed stability for the geology program.

Congratulations to Dr. Nate Currit who was promoted to Associate Professor with tenure last fall. Nate has been awarded a professional development leave (PDL) for the 2012-13 academic year, during which he will further his remote sensing research efforts. Also on leave for Fall 2012 will be Dr. Denise Blanchard-Boehm. During the current academic year, Dr. Jim Petersen was on PDL for Fall 2011 and Dr. Sven Fuhrmann has been on PDL for the full 2011-12 academic year. Such research activities are essential in order to further the Department's research and graduate education efforts, especially given the role of our doctoral programs.

In January, President Trauth announced that Texas State University-San Marcos had been elevated to “emerging research status” by the Texas Higher Education Coordinating Board, joining seven other institutions in this second-tier research university designation. Strong research activities including robust PhD programs are essential components for gaining such a designation. Through August 2011, 70 of the 139 PhD degrees (50.4%) awarded by the University had been granted by the PhD programs housed in the Department of Geography. Thus, Geography's role in the University's ability to attain this new designation was of paramount importance.

I wish to express my personal congratulations to the many colleagues and students who received awards and garnered other significant accomplishments during the past year. It is indeed an honor to serve as Chair for such an active and distinguished group of colleagues and students. As always, Geography at Texas State continues to prosper and excel!

## Alumni Focus

We thank you for your service to our country!

“Hi my name is **Bret Hartman** I'm a graduate of Texas State from 2003. I'm currently deployed in Iraq supporting the 36th Infantry Division of the Texas National Guard in Basrah, Iraq. We recently took a group picture of all the Texas State Alumni here in Basrah and I thought I would forward along to you and maybe add to your photos of Alumni. 36th ID has been deployed here in Basrah since December 2010. My main reason behind forwarding was that I know when I was a student one of the things that helped me decide on a career path was seeing all the business cards that were posted on the wall in the Geography department. It gave me ideas on what I could do with that degree and helped me plot a course for my current career. I currently am a Department of Defense Civilian for a National level Agency and graduated from Texas State with a Degree in G.I.S. Geographical Information Systems and a minor in Political Science.”



From left to right in the photo is Major Delgado, Captain Horst, General Smith, Bret Hartman, and Lieutenant Colonel Dement.

**Jose Silvan-Cardenas**, Advisor: Ben Zhan, who finished his Ph.D. in geography in 2009, has won the J. Warren Nystrom Award for the outstanding recent dissertation in geography in the U.S. Two of the five finalists were Texas State graduates. This is the third time in seven years that a Texas State graduate has won – out of the 70 geography Ph.D. programs in the nation.

The final competition for the award occurred at the 2011 AAG meeting in Seattle where the five finalists presented a paper on their dissertation work.

This is the third time that a Texas State geography Ph.D. graduate has won this award during the past seven years, which is a remarkable record given that there are over 70 geography Ph.D. programs in the nation! Dr. Lynn Resler (advisor Dr. David Butler) won in 2005 and Dr. Xuwei Chen (advisor Dr. Ben Zhan) won in 2007.

Jose is currently Associate Professor at the Mexican National Center for Geography and Geographic Information Science and Geomatics (CentroGeo), Mexico City, Mexico.

**Hannah Ward** (2008 alumnus from our master's program), was featured in this video clip that aired Wed. June 2 on KVUE. She is organizing a trip taking students from Reagan High to Kenya to help those less fortunate. As a department, we should be proud of Hannah and her passion for increasing global awareness!

<http://www.kvue.com/news/Reagan-High-School-students-aim-for-volunteer-trip-to-Kenya-95457554.html>

Texas State University-San Marcos was well represented at the awards ceremony held at the National Council for Geographic Education's annual conference in Portland, Oregon on August 6, 2011.

Doctoral Alumni **Dr. Audrey Mohan** and **Dr. Edris J. Montalvo** both received the Salvatore J. Natoli Dissertation Award in Geographic Education.



Kate Yow, MS 2010,  
Selected as Liberal  
Arts Advisor of the  
Month in August  
2011



Send us your Business Cards!

Ben Murdoch won third in the state for his Geography Awareness Week poster. He is the son of Texas State Geography B.S. and MAG alumni, David Murdoch who is a “senior hydrologist” for the LCRA!





**13th Annual Distinguished Grosvenor Lecturer:  
 Danny Edelson  
 Vice President for Education  
 National Geographic Society  
 Executive Director, National Geographic Education Foundation  
 March 22, 2012**



As a curriculum designer, software developer, and educational researcher, Danny Edelson has dedicated his career to improving young people's understanding of the world they live in and their role in determining its future. In his position as vice president for education, he oversees National Geographic's outreach to educators and its efforts to improve geographic and geoscience education in the United States and abroad. This work includes the creation of educational materials for learners of all ages, the delivery of professional development for educators, the implementation of public engagement programs, advocacy on behalf of geographic education in policy discussions and grant-making to support geographic literacy initiatives throughout the United States and Canada.

Edelson began his career in education as a researcher in learning technologies with a focus on environmental and geographic education. Prior to joining National Geographic in 2007, he was a professor in education and computer science at Northwestern University for 14 years. As part of his integrated research and development at Northwestern, he created and published both software and textbooks for schools, including My World GIS™, a geographic information system for grade 6 through college; "Investigations in Environmental Science," a case-based environmental science textbook for high school; and a number of project-based earth science units for comprehensive middle school science programs. He also created professional development programs for educators from middle school through college and led several large-scale instructional reform efforts in the Chicago Public Schools.

*Grosvenor Lecture continued on page 15*

## **Texas Alliance for Geographic Education (TAGE)**



Jo Beth Oestreich

The Texas Alliance was established in 1986 under the joint leadership of Richard G. Boehm of Texas State University-San Marcos and James B. Kracht of Texas A&M University. Sarah W. Bednarz of Texas A&M replaced Kracht in 1987. Presently, under the leadership of Jo Beth Oestreich and Sarah Bednarz, the Texas Alliance has over 6,500 members, including teachers, university professors, parents, and community leaders, who share the common goal of strengthening geographic education in Texas.

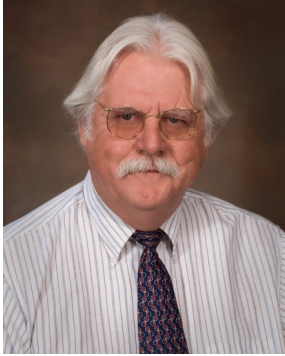
The Texas Alliance hosts workshops and conferences several times throughout the year in different locations across the state. These workshops blend classroom application with geographic content in order to both "educate the educators" as well as provide them with innovative, tested lesson plans. The Alliance's most important contribution is the sponsorship of summer institutes for teacher training in geographic education.

Check out upcoming TAGE events:

<http://www.geo.txstate.edu/tage/news-events/workshops.html>

We are sad to let her many geography friends know that Barbara Woolsey passed away quietly in her sleep on February 10. Barbara was a very active member of TAGE in its early years and helped to make the organization dynamic and teacher-centered. She was a geo-evangelist in all the places she lived across the state with her dear late husband, Norman, and daughter Eileen. Barbara was very proud of her Native American heritage and the connections that it gave her to the environment. – Sarah Bednarz

Barbara Lorraine Woolsey graduated from SWTSU in 1973 with a BA in political science, geography and a minor in English.



## JAMES F. PETERSEN receives the George J Miller Award for Distinguished Service — 2011

The George J. Miller Award is the highest honor given by the National Council for Geographic Education, and is given for a distinguished record of service to geography education. The award was presented at the August 2011 NCGE meeting held in Portland, Oregon. Jim Petersen's service to NCGE extends from 1984 to the present. He took the position of media materials editor of the NCGE/GPN Slide Library back then and continues now as the Journal of Geography's book review editor. He served as NCGE President in 2000 and before that three-year terms each as Vice President for Finance and Vice President for Research and External Relations. He was one

of NCGE's representatives on the Steering Committee of the Geographic Education National Implementation Project (GENIP), 1997-1999. He also served as chair of NCGE's endowment task force working to implement his goal of creating an endowment for the NCGE.

It was Jim Petersen who led the effort to create this endowment and then worked with other members of the task force and a consultant to create a fund-raising campaign that produced approximately \$300,000 plus the Will and Ruby Miller Research Fund. In Jim's 27 years of service to NCGE, the 21st Century Fund is his proudest achievement. Richard Boehm received this award in 1991.

### AAG Workshop Creates US-India Geography Collaborations

Dr Osvaldo Muniz-Solari participated and coordinated the international workshop with Dr Michael Solem (AAG), Dr Phil Klein (University of Northern Colorado), and Waverly Ray (PhD Candidate, Texas State University) that the AAG recently developed with the Indian Institute for Geographical Studies (TIIGS) to catalyze educational collaborations between schools and universities in the US and India.

Held from March 12-16, 2012 in Bangalore, India, the workshop drew a delegation of 28 geography teachers and professors from the US and India to develop new educational resources for the AAG's Center for Global Geography Education (CGGE). CGGE provides open access to six online modules offering regional case studies and collaborative projects for high school and university geography classes.

The case studies developed by the Bangalore workshop participants draw on geographical research by American and Indian geographers to offer comparative analyses of issues related to the global economy, national identity, migration, population and natural resources, global climate change, and water resources. Each case study will be paired with a collaborative project that deploys social networking and interactive technologies for connecting geography classes in the US and India for discussions, spatial data analysis, and problem-based learning activities. The materials will be published in September 2012 on the CGGE website (<http://globalgeography.aag.org>).

In addition to the new CGGE resources, a number of other publications are planned. One will be a special symposium for the *Journal of Geography in Higher Education* that will feature research papers related to the workshop's theme of internationalization, focusing especially on challenges and opportunities of developing and sustaining educational collaborations in



Participants visiting Infosys, one of the most important corporations in Bangalore's technological urban location.



Dr Osvaldo Muniz-Solari guiding participants in new forms of interaction to create international collaboration in geography.

Muniz continued on page 15...

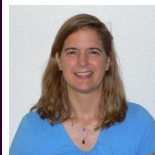


Congratulations to **Dr. Byron (“Doc”) Augustin**, Regents’ Professor Emeritus, on the publication of his latest book. Published by Marshall Cavendish, the book officially came out September 15 and is titled “THE FOOD OF MEXICO: FLAVORS OF THE WORLD”.



**Denise Blanchard:**

Spring 2012, Honorary Professor of International Studies, Texas State University  
Fall 2011, Favorite Professor, Alpha Chi National Honor Society, Texas State University



**Sarah Blue: New Tenure-Track Faculty Member**

Sarah Blue began with the department as a tenure-track Assistant Professor specializing in Human Geography. Dr. Blue received her PhD in Geography from the University of California, Los Angeles in June 2004. Doctoral Dissertation: Socio-Economic Costs of Global Integration: Remittances, the Informal Economy, and Rising Inequality in Contemporary Cuba



**Brock Brown**, Received University Award for Excellence in Service;

\* Named Rising Star at Texas State University

When most people think of geography, they think of maps and climates. But that’s only part of the story, explains associate geography professor Brock Brown, who this year was named Texas State’s 17th Piper Professor.

The title, given annually to Texas college teachers by the Minnie Stevens Piper Foundation, honors well-rounded, outgoing teachers devoted to their professions and who have made a special impact on their students and the community.

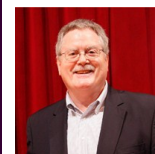
Geography is about much more than memorizing the cities on maps, Brown says, his enthusiasm for the subject lighting up his bearded face.

“Geography is a broadly applicable, interdisciplinary perspective,” he says. “Geographers can observe and analyze anything distributed across earth space — political behavior, precipitation, crime, health problems, levels of educational attainment — and try to investigate the underlying spatial processes responsible for the observed patterns.”

In Brown’s office, more than a couple of chairs invite students and colleagues to gather and stay awhile.

Brown, who sips his coffee from a recycled Ball jar, has taught at Texas State since 1992, and he’s proud to

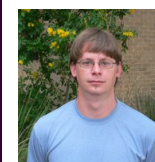
*Continued on page 17*



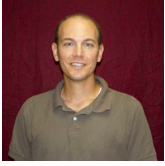
**David Butler:**

\* Spotlighted as one the “System’s Best” for his accomplishments in being named Texas State University System Regents’ Professor, University Distinguished Professor, Golden Apple Award winner, Outstanding Professor in Geography, among other honors

\* 2012 recipient of the Melvin G. Marcus Distinguished Career Award. The Geomorphology Specialty Group of the Association of American Geographers formally presented the award at the February 2012 annual AAG Meeting held in New York City.



**Brian Cooper**, Senior Lecturer, received the award for International Studies Professor of the Year at the April 15 Sigma Iota Rho awards ceremony of the Center for International Studies.



**Nathan Currit :**

Tenured and promoted to Associate Professor



**Rich Dixon** and Shae Renee Luther were awarded \$5,000 by the Texas Water Resources Institute at Texas A&M to investigate benefits and cost of water reuse programs in Texas.



**Richard Earl :**

Twenty Years of Service at Texas State University



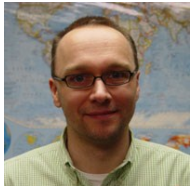
**Lawrence Estaville:**

\* Honored at the Seattle AAG (August 2011) meeting with the Outstanding Scholarship and Service Award from the Business Geography Specialty Group.

\* Appointed to the Cancer Alliance of Texas (CAT) which is overseen by the DSHS. Lawrence will represent the Texas State CAMCO and the Texas CAMCO (which includes other Texas universities, for example, UT-San Antonio and the University of North Texas).

\* Appointed to the Board of Directors of the National Marrow Donor Program (NMDP). Lawrence's committee assignment for 2012 will be to serve on the Patient Services Advisory Group.

\* Publication: the "Texas Health Atlas (Lawrence Estaville, Kristine Egan, and Abel Galaviz)" which was published by the Texas A&M University press in March 2012. This is the second atlas in the series—the first being the "Texas Water Atlas" with Dr. Richard Earl.



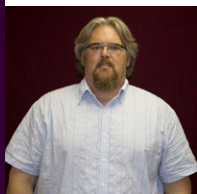
**Sven Fuhrmann:**

Granted Faculty Development Leave Fall 2011/Spring 2012



Michelle Hamilton and Kate Spradley have been working with **Alberto Giordano** in Geography on a taphonomy project at FARF that looks at how vultures process human remains. Their first publication came out in December (Spradley M, Hamilton MD, Giordano A. *Spatial patterning of vulture scavenging remains*. *Forensic Sci Int*. 2011; Dec 26 [Epub ahead of print]), and it has generated a great deal of public interest. It and Kate's work on identifying remains of border crossers were featured on Fox News.

<http://www.myfoxaustin.com/dpp/video/Forensic-Anthropologist--Works-to-Identify-Human-Remains-Along-Border20120202-ktbcw#axzz1IKYAAiLw>



**Ron Hagelman:**

Received the Dean's Excellence Award in Teaching



**James Kimmel:**

- \* Honorary Professor of International Studies 2011-2014
- \* Publication of his new book "Exploring the Brazos River", which was published by the Texas A&M University Press in September 2011. This is his second rivers book with the book on the San Marcos River having been published in 2006.
- \* Recipient of the 2011 AAG Globe Book Award for Public Understanding of Geography. This award was in recognition of his Brazos River book.



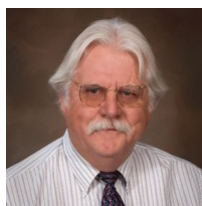
**Bob Larsen**, awarded 5 grants by the Texas Commission on Environmental Quality for the Texas Pollutant Discharge Elimination System: 1) PSA 010 Engineering Services \$43,000; 2) WQD-008 Permit Processing CTR \$137,799; 3) WQD-008 Permit Processing CTR \$350,000; 4) PGA 009 Intern services, State funds \$9,000; and 5) PGA 009 Intern services, federal funds \$133,000.

**Yongmei Lu:**

Ten Years of Service at Texas State University

**Osvaldo Muniz:**

- \* Promoted to Professor
- \* Awarded the honorary title of "Professor of International Studies".

**Jim Petersen:**

- \* Granted developmental leave: Fall 2011
- \* Awarded NCGE's highest honor, the George J. Miller Award for Distinguished Service to Geographic Education (see article page 5).

**John Tiefenbacher:**

Honorary Professor of International Studies 2011-2014

**Ben Zhan:**

- \* Received the Presidential Award for Excellence in Scholarly/Creative Activities at the Professor/Associate Professor rank.



## From the Graduate Coordinator... Dr. David Butler, Professor



Another Academic Year is nearly completed, and our graduate students continue to excel and represent our department terrifically throughout the state, and across the country, and indeed even around the world! Since our last Newsletter in Spring 2011, the department has seen doctoral graduates from all three Ph.D. programs in Environmental Geography, Geographic Education, and Geographic Information Science. In the Environmental program, Dr. Andy Day (Advisor, Dr. Mark Fonstad) is now an Assistant Professor at the University of Louisville. Dr. Eric Samson (Advisor, Dr. Denise Blanchard) is an Assistant Professor at Central Connecticut State University. Dr. Keith Bremer (Advisor, Dr. Fred Day) is an Instructor in our own department here at Texas State, and Dr. Mindy Conyers (Advisor, Dr. Fonstad) is an Assistant Professor at the University of Central Arkansas. From the Geographic Education program, Dr. Dick Boehm advised Dr. Catherine Cooper and Dr. Francisco Morales, both Independent Scholars in Maryland and Texas, respectively. Dr. Ben Zhan advised two students to completion in the GIScience program: Dr. Neng Wan, who is employed as a Post-doctoral Research Assistant at the University of Nebraska Medical Center; and Dr. Zhijun Yao, employed as a Senior Systems Analysts with a private firm in Baltimore, Maryland. Finally, Dr. Michele Tucci (Advisor, Dr. Alberto Giordano) returned to his native Italy where he is an independent GIS scholar. From our M.A.G. and M.S. programs, numerous students have graduated and moved on to doctoral programs, as well as successful employment throughout central Texas and across the state and country. Congratulations to all our successful graduates, and best wishes to the many of you who are currently striving to complete degree requirements to graduate in May or August!

Elsewhere in this Newsletter, you will read about the many successes our current graduate students have had during this academic year, in publishing efforts, paper competitions, in presenting papers and posters in a broad diversity of venues, and in representing the department through their teaching and research efforts. We believe that our graduate students are among the best in the country, and are extremely proud of their accomplishments!

The faculty of our department are, of course, key players in our graduate program, and I'd like to thank all of them for their efforts in mentoring, encouraging, and yes, cajoling our students to achieve their best. Thanks also to the members of the Graduate Committee, which includes Drs. Osvaldo Muniz, Yongmei Lu, Kevin Romig, and Jennifer Jensen, for their assistance and insights in dealing with the broad range of issues that arise in the graduate program during the course of an academic year. All of these folks, along with our wonderful and indispensable Graduate Staff Advisor, Mrs. Allison Glass-Smith, make our graduate program what it is, and I am proud and delighted to work with all of them. Thanks to all our faculty and students for another great year!



Regents' Professor David Butler and his doctoral student Melanie Stine received a grant of \$2,000 from the AAG Mel Marcus Fund Award, which will support Melanie's field work in Glacier National Park, Montana. The award was presented at the AAG Awards Luncheon during the 2012 AAG Annual Meeting in New York City



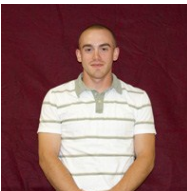
PhD student **Carmen Brysch** (doctoral advisor is Dr. Dick Boehm)  
 \* won the Gail Hobbs Student Paper Competition from the Geography Education Specialty Group at the 2011 AAG meeting held in Seattle (\$100 cash award).  
 \* received the Willard and Ruby S. Miller Grant for Research in Geographic Education.



PhD student (Completed Spring 2011) **C. Andy Day** (doctoral advisor Dr. Mark Fonstad) accepted a tenure-track position as Assistant Professor of Geography at the University of Louisville.



PhD student **Larry Kleitches** (doctoral advisor is Dr. David Butler) Paper Accepted:  
 \* Kleitches, Larry P., 2011. How the Cold War reconstructed the Alamo. *Journal of the American Studies Association of Texas* 42, in press. The paper was published in the journal's fall 2011 issue.  
 \* Population geography and landscape geography: A drive-in double feature  
 By Larry Kleitches, Department of Geography, Texas State University-San Marcos  
 Population Specialty Group Vol. 37 | Spring 2012 <http://csde.washington.edu/aagpsg/>



PhD student **Adam Mathews** (doctoral advisor Dr. Jennifer Jensen)  
 \* Article Published :  
 Mathews, A.J. and Jensen, J.L.R. 2012. An airborne LiDAR-based methodology for vineyard parcel detection and delineation. *International Journal of Remote Sensing* 33(16): 5251-5267.  
 \* Received a 2012 Endeavour Research Fellowship. The Australia Endeavour Awards are the Australian Government's internationally competitive, merit-based scholarship program providing study, research or professional development opportunities between Australia and the world.  
 Adam will undertake his five-month Fellowship beginning in November (2012) at Charles Sturt University in New South Wales, Australia. In Australia, Adam will be working with his external dissertation committee member, Dr. Andrew Hall, using remote sensing techniques to analyze aerial imagery of vineyards to assess vine health.



PhD student **Todd Moore** (doctoral advisor is Dr. Rich Dixon) Paper Publication  
 TODD W. MOORE and RICHARD W. DIXON (2011) "CLIMATOLOGY OF TORNADOES ASSOCIATED WITH GULF COAST-LANDFALLING HURRICANES", *The Geographical Review*, 101 (3): 371-395.



PhD student **David Parr** (doctoral advisor is Dr. Yongmei Lu)  
 elected the vice-chair of the Graduate Student Affinity Group of the AAG for 2011-2012, (also means he will serve as chair from 2012-2013 and a board member from 2013-2014).



PhD student **Melanie Stine** (doctoral advisor is Dr. David Butler)  
 received the Mountain Geography Specialty Group, 2012 Chimborazo Student Research Grant Award Honorable Mention presented at the 2012 AAG meeting in New York City.



PhD student **Christi Townsend** (doctoral advisor is Dr. David Butler) won 2nd place in the Wine Specialty Group Student Paper Competition at the AAG New York meeting for her paper titled "Historical Geography of Wine Production in Chile and Argentina".



PhD student **Yasmin Diallo Turk** (doctoral advisor is Dr. Kevin Romig) project for Lycee Malick Sy featured in The Huffington Post.

[http://www.huffingtonpost.com/mary-pauline-lowry/one-woman-brings-hope-and\\_b\\_1081677.html](http://www.huffingtonpost.com/mary-pauline-lowry/one-woman-brings-hope-and_b_1081677.html)



PhD student **Clayton Whitesides** (doctoral advisor is Dr. David Butler)

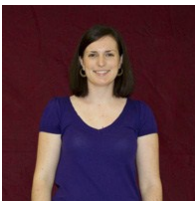
\* Selected as the College of Liberal Arts 2012 Outstanding Graduate Student

\* Published a paper in the excellent journal *Physical Geography*. The paper evolved out of his Master's thesis completed in the Department of Geography at Brigham Young University.

The citation is:

Whitesides, Clayton J., and Matthew F. Bekker, 2011. Rocky substrate and the lower treeline ecotone of Yellowstone's Northern Range. *Physical Geography* 32(4), 356-373.

Co-author Matt Bekker was Clayton's master's advisor at BYU.



PhD student **Elyse Zavar** (doctoral advisor: is Dr. Ron Hagelman):

\* Recipient of the 2012 Jeanne X. Kasperson Student Paper Award from the Hazards Specialty Group of the Association of American Geographers. The award was presented at the February 2012 AAG meeting in New York City.

\* Awarded the *Alpha Chi National College Honor Society's Joseph E. Pryor Graduate Fellowship* for 2012 (<https://www.alphachihonor.org/default/index.cfm/scholarships/current-recipients/>). Elyse will receive \$5,000 to apply toward the completion of her graduate studies and her dissertation field work. This is the first time that a Texas State University PhD student has received the award. Elyse has also been invited to serve as Vice President of Texas State's Alpha Chi chapter.

---

***The Department of Geography wishes to congratulate the following individuals for the completion of their dissertation and graduated in spring/summer/fall 2011:***

***C. Andrew Day, Spring 2011, Ph.D. in Environmental, Advisor — Dr. Mark Fonstad***

***Eric Samson, Spring 2011, Ph.D. in Environmental, Advisor — Dr. Denise Blanchard***

***Michele Tucci, Spring 2011, Ph.D. in GIScience, Advisor—Dr. Alberto Giordano***

***Zhijun Yao, Spring 2011, Ph.D. in GIScience, Advisor—Dr. F. Benjamin Zhan***

***Keith Bremer, Summer 2011, Ph.D. in Environmental, Advisor —Dr. Fred Day***

***Mindy Conyers, Summer 2011, Ph.D. in Environmental, Advisor —Dr. Mark Fonstad***

***Catherine Cooper, Summer 2011, Ph.D. in Geographic Education, Advisor—Dr. Richard Boehm***

***Neng Wan, Summer 2011, Ph.D. in GIScience, Advisor—Dr. F. Benjamin Zhan***

***Francisco Morales, Fall 2011, Ph.D. in Geographic Education, Advisor—Dr. Richard Boehm***

# Upcoming Events

**18th Annual Geography Alumni Reunion and Student Celebration**  
**Centennial Hall Teaching Theater/Downtown San Marcos**  
**April 28, 2012**

**Texas State Spring Commencement (Geography)**  
**May 12, 2012**

**Binghamton Geomorphology Symposium**  
**Jackson Hole, Wyoming**  
**September 21-23, 2012**

**National Council for Geographic Education (NCGE)**  
**San Marcos, Texas**  
**October 4-7, 2012**

**Applied Geography Conference**  
**Minneapolis, MN**  
**October 10-13, 2012**

**Race, Ethnicity and Place Conference**  
**San Juan, Puerto Rico**  
**October 24-26, 2012**

**Southwest AAG (SWAAG) Division Meeting**  
**Las Cruces, New Mexico**  
**October 25-27, 2012**

**Geography Student Research Symposium (TXGSRs)**  
**Texas State — Evans Liberal Arts**  
**April 2013**

**Association of American Geographers (AAG)**  
**Annual Meeting**  
**Los Angeles, California**  
**April 9-13, 2013**



## Geography Student Research Symposium, February 17, 2012

The 2012 GSRS was, once again, a huge success. Additional details regarding the 2012 conference can be found at: [http://www.geo.txstate.edu/txgsrs/contentParagraph/01/content\\_files/file2/GSRS\\_flyer-2011.pdf](http://www.geo.txstate.edu/txgsrs/contentParagraph/01/content_files/file2/GSRS_flyer-2011.pdf)

The TXGSRS is organized annually by the TXGSRS Committee and the Department of Geography to enable Texas State University students, students from surrounding colleges and universities, and other area geography research and education groups to meet, interact, and collaborate in a research conference setting.

Graduate students presenting research at the annual Association of American Geographers (AAG) meeting will use the event to practice their papers and posters and gain valuable input from department faculty and student-colleagues before attending the AAG meeting.

Texas State undergraduate students and all students from local colleges and universities are invited to attend and/or present results from individual or group research projects.

Topical panel discussions are organized by the Department of Geography Graduate Student Forum and our keynote speaker will round out the conference.

The conference is free to all participants and attendees, and lunch is provided by the Department of Geography.



During March, the Department of Geography joined with the TX State CASO office to host **Culture Fest 2012**. The Student Organization provided the campus community with an opportunity to learn about and celebrate the diverse student population. Thank you to Chanell Goodright and her committee for organizing this fun filled event!



### Department Co-sponsors 2011 Binghamton Geomorphology Symposium

The Department of Geography co-sponsored, together with the Department of Earth Sciences at the University of South Alabama (USA), the 2011 Binghamton Geomorphology Symposium that was held on the campus of USA in late October. The conference theme was Zoogeomorphology and Ecosystem Engineering, and was co-organized and co-hosted by Regents' Professor Dr. David Butler and Dr. Carol Sawyer of the University of South Alabama. Dr. Sawyer is a 2007 Ph.D. graduate of the Texas State Environmental Geography Ph.D. program, and served as the Local Arrangements Coordinator and Field Trip leader. Poster presentations at the symposium were given by departmental doctoral students Melanie Stine, Stephen Tsikalas, and Clayton Whitesides, and by recent B.S. graduate Will Butler who is currently in his final semester as a master's student at Kansas State University.

***Don't forget to register and attend the 18th Annual Alumni Reunion and Student Celebration! This year's event will be held on Saturday, April 28, 2012, at the Centennial Hall Teaching Theatre and downtown San Marcos (in conjunction with KTSW's MR Fest).***

***The registration form can be found on the last page of this newsletter, as well as on the***

***Geography Department website -***

***<http://www.geo.txstate.edu/alumni/reunion.html>.***

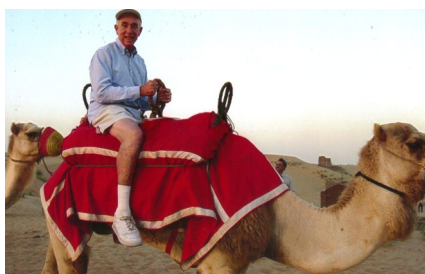
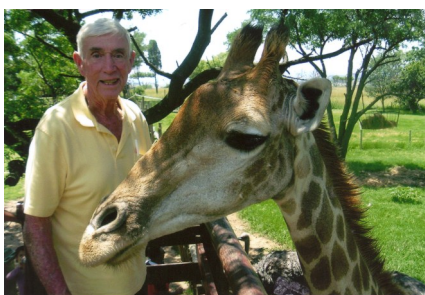
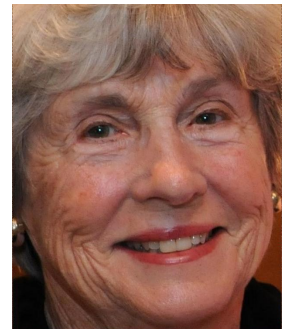
Clayton and Hilary welcomed to the world, Ruby Whitesides! Ruby was born on 11 Jan 2012, weighed 6lbs 5oz, and was 18 inches long. Congratulations Whitesides family!



(photo **Andy Sansom** and Victor Emmanuel)  
Victor Emmanuel is the premier nature travel outfitter in the nation. The event was a luncheon held by Travis Audubon where Andy Sansom received the second Victor Emmanuel Conservation Award.

Farewell, Anne Cooper

**Honorable Anne Cooper** Anne Cooper, 76, of San Marcos, Texas passed away suddenly Friday, December 16, 2011. Anne devoted her life to the care and energetic support of her family and community. She reached beyond family to enrich the lives of others in the spirit of public service. She helped to found the Southside Community Center and to bring Head Start to San Marcos. She believed that a child's knowledge of geography broadened the horizons of possibility, and so during her tenure in office, she helped organized San Marcos's Geo Bowl through the Geography Department of Texas State University. She will be missed by all.



Current non-degree seeking student, **Malcolm Spiers**, has spent the last few years realizing his lifetime dreams of traveling to see tennis matches worldwide. His first trip was to the Australia Open with side trips to Fiji and New Zealand. Next he was off to Seville Spain to the Davis Cups tournament. The Shanghi Masters was next followed by a trip to Moscow for the Kremlin Cup matches. His next trip was to South Africa, again for tennis tournaments. He even made it to Dubai for the Dubai Open. Next he went to South America to watch tennis matches in Brazil and Argentina. His last trip so far was to Switzerland and Paris for guess what? More tennis. All this time he remains employed at Shadow Cliff Swim and Tennis Club. Malcolm did visit his son, Rolfe, in Kentucky just in time for the Kentucky Derby. He also makes an annual trip to his birth state, Maine. What is his next destination? Italy! We look forward to his next adventure!



Dr. Butler and Dr. George Malanson at the IALE closing ceremony banquet in Beijing, August 2011.

*Butler continued from page 1:*

the meeting, Dr. Shen led Dr. Butler, Dr. George Malanson of the University of Iowa, and Dr. Kostas Triantis of the Department of Biology at the University of Athens, Greece, on a two-day field trip to the Great Wall of China at Badaling (photo on left), as well as to a rural village renowned for its tofu production and to the mountains northwest of Beijing. While in Beijing, Dr. Butler also gave a guest lecture to Dr. Shen's students in the Department of Ecology at Peking University, and attended the IALE featured banquet with Dr. Malanson, who was a member of the Department of Geography at Southwest Texas State University in 2000-2001.

*Muniz continued from page 5...*

India and South Asia. Print editions of selected case studies and a related guide for AP Human Geography teachers will appear in a future issue of *The Geography Teacher*, published by the National Council for Geographic Education. The materials will also be published in the Hindu and Kannada languages to extend the dissemination of the resources throughout India.

Funding for the CGGE-India workshop was provided by a grant from the National Science Foundation, with additional support from the AAG, the *Journal of Geography in Higher Education*, and Taylor & Francis.

*Hellman continued from page 1...*

In retirement, Dr. Hellman served as Executive Vice President for Research and Marketing for Electrowave Systems of San Antonio, as President of the Remote Sensing and Mapping Laboratory of Seguin, and as a Senior Consultant for Carto-Remote Sensing Consultants in San Marcos.

In lieu of flowers, the family encourages donations to the Wounded Warrior Project (see <http://www.woundedwarriorproject.org/>).

Donations in Hellman's memory to the Al Hellman Geography scholarship, in the Texas State Geography Department (account number is 6-7757) can be made online at <https://tim.txstate.edu/uaexternalonlinegiving/Home.aspx>.



Previous Hellman Scholarship Recipients: left to right (Derek Mergele, Caroline Hamann and Timothy Hayse)



*Grosvenor Lecture continued from page 4...*

Edelson has written extensively on motivation, classroom teaching and learning, educational technology and teacher professional development, drawing on research conducted with colleagues and students. He is an author of more than 50 papers in journals, edited books and conference proceedings, including "The Cambridge Handbook of the Learning Sciences," "The International Handbook on Science Education," *Journal of the Learning Sciences*, *Journal of Research on Science Teaching*, and *The Science Teacher*.





★ **Deep in the Heart of Geography** ★  
**OCTOBER 5TH-7TH 2012**  
**SAN MARCOS, TX**



The Alamo



Downtown Austin



Tubing the San Marcos River



Tex-Mex Cuisine

### Field Trips

Full Day • San Antonio River Restoration • Blackland Prairie Loop -

Agricultural & Ranching Transformation • Hill Country Wineries • Hill Country Cultures - German Culture on Texas Land • Bastrop Healing Recovery after the 2011 Wildfire • Shale, Oil & Gas - Eagle-Ford Fracking Process

Half Day • San Marcos Place-based Education - Float the San Marcos River & see Endangered Plants & Animals • Austin Bicycle Tour • New Braunfels & Gruene - German Culture & Largest Freshwater Spring in Texas • South Austin & the Broken Spoke - Weird Austin & Western Music & Dancing •

Canyon Lake Gorge - Landscape Change after 2002 Flood  
Self-Guided • San Marcos History (smartphone tour) • Lockhart BBQ (smartphone tour) • San Marcos Outlet Center - 2nd largest in the U.S.

Other Area Attractions - San Marcos Springs • Congress Bridge Bat Colony (Austin) • San Antonio River Walk & the Alamo • 6th Street Music District (Austin)

Saturday, October 7th, will feature workshops and sessions specifically for K-12 teachers such as the National Geographic teacher Fest, Super Saturday, and EOC.



Embassy Suites, San Marcos  
 Conference room rate: \$154  
 Free breakfast included



Interior, Embassy Suites  
 Free Parking on-site





Photo by Ashley Landis

## Animal therapy programs offer companionship and encouragement to students

Julie and Kevin Romig are no strangers to the positive benefits of volunteering. The experience was something they wanted to share with members of their family who they said they knew could bring something special to the experience.

“We had done other types of volunteer work, and often mused, ‘Oh, [Lazarus] should be here,’ or ‘Moses would love this,’ or ‘Magellan could make that person feel so much better,’” Julie said of their three dogs. “It didn’t feel right to leave them at home when we would volunteer.”

The Romigs took that inspiration from Lazarus, Moses and Magellan and turned it into Pawsitive Energy: Delta Society Pet Partners of San Marcos, a nonprofit group that provides animal-assisted therapy.

Continued article can be found at: <http://impactnews.com/articles/pawsitive-energy>

*Brown continued from page 6*

have contributed to what’s now the largest and one of the highest ranked undergraduate geography programs in the country. Students are attracted to the geography program for many reasons, he says. Texas State’s location in San Marcos provides a unique laboratory for students interested in environmental studies, physical geography, water resources, economic, and urban geography. The San Marcos River is home to eight federally listed endangered species found nowhere else in the world.

Brown’s classes focus on urban and economic geography. He sets an example with his life outside the classroom. His San Marcos home is an exercise in wildscaping, a practice that uses native plants to mitigate the effects of urban growth.

“Wildscaping provides a habitat for native species, conserves water, and provides private rural-like spaces and views in an urban environment,” Brown says.

As an instructor, Brown’s goal is to teach students the critical thinking and reasoning skills they need to find correlations between seemingly unrelated phenomena.

“I want to teach them life lessons, not just content,” Brown says. “Content changes all the time. What we can do is teach students to observe, analyze and work intelligently to identify and solve problems.”

Brown says his students have been his inspiration for the past 16 years. The next generation, he says, is going to be charged with solving problems such as urban sprawl and sustainable transportation, environmental change, and economic uncertainty.

“My students understand the uncertainties they face and want to learn everything that they can. There’s a large number of students who are vitally involved in what they’re doing,” Brown says. “My students go down and clean the river and support good causes. I have students who are going to make a difference, and that’s the balance in my life.”

Another point of interest: Over the past several years, Brock Brown has been working with IT to develop a virtual field school using the Second Life virtual platform and focusing on the Hispano Homeland village of El Cerrito in New Mexico. If you are interested in the program, three dimensional field school environment, or the integrated technologies that have been incorporated please visit the link below.

<http://vimeo.com/39429424>



# Additional Accolades

**Sarah Eason**, selected for the Erasmus Mundus scholarship in the Masters Course in Geospatial Technologies, Sarah Eason received the very competitive Erasmus Mundus scholarship (36,500 €) for enrolling in the Masters Program in Geospatial Technologies at (three) different European universities.

**Tom Gleason**, geography undergraduate student, was honored with the AAG Business Geography Specialty Group's second-place award in its student paper competition. The first-place winner was a Ph.D. student from Arizona State. The student paper competition included three Ph.D. students, one master's student, and four Texas State undergraduate students. Tom's advisor for preparing for the AAG meeting was Dr. Lawrence Estaville. Tom's placement was indeed an impressive accomplishment!

**Jacqueline Phillips**, undergraduate geography student, has been accepted to a 10-week research program/internship through NASA's Goddard Space Flight Center. The NASA student internships are highly competitive and desirable among remote sensing students. Jacqueline has been working closely with Dr. Jennifer Jensen, Assistant Professor of Geography.

**Katie Steele**, Geography major (Resource and Environmental Studies emphasis), has been awarded the very prestigious "Greater Research Opportunities Undergraduate Fellowship for Environmental Studies" from the Environmental Protection Agency. Dr. Denise Blanchard provided faculty nomination. Katie will be a fellow of the EPA, one of 40 nationally, for her final 2 years of undergraduate study. She will serve as an intern to complete a project for the EPA during summer 2012 (location to be determined) and the EPA is funding the remainder of her undergraduate education.

## Texas State deserves latest accolade

*Excerpts from Article featured in Austin American Statesman January, 2012*

Institutions, like people, have to work hard to justify the confidence and loyalty of their friends and work constantly to maintain that trust.

If Texas State University were a person, it would be known as reliable, talented and intelligent but modest.

The institution's modesty has always been one of its most endearing traits. Texas State administration, faculty and students have netted honors and recognition but don't usually brag on themselves. They focus energy into doing. The latest recognition is a big one. The Texas Higher Education Coordinating Board designated Texas State University as an emerging research university.

The recognition is one step below Tier I status, a designation enjoyed by the University of Texas at Austin, Texas A&M University and Rice University.

Texas State's fall 2011 enrollment was just more than 34,000 students, making it the fifth-largest institution of higher learning in Texas.

The university's growth in the past 20 years has reflected the phenomenal Central Texas growth over the same period. Texas State has been aggressive in its recruiting efforts in and out of the region. The institution has also been aggressive in achieving status as a Hispanic Serving Institution.

To win recognition as an emerging research institution, institutions must offer a wide range of undergraduate and master's degree programs; serve a geographically diverse student population; award at least 20 doctoral degrees per year; and offer at least 10 doctoral programs.

Institutions also compete by raising money from donors. Money from the Texas Research Incentive Program is proportionate to how much institutions raise from their donors. Donor generosity is one way of measuring an institution's

*Continued on page 19*



Go Green! A phrase heard quite often in these changing times, and here at Texas State University the Environmental Conservation Organization (ECO) of the Geography Department, is doing just that! Their mission is to encourage progress and growth towards a global sustainable future through local actions, and the 2012 spring semester has plenty of exciting events and activities planned to do so!

Since summer, members of ECO have been very active in trying to get San Marcos to ban plastic bag use, known as the “Bag Ban”, this project has made steady progress, and while San Marcos will not do a complete bag ban yet, efforts are being made to make this happen. Also, ECO has been very active in giving students an option of buying local produce! An event they hope will continue on for years, the Farmers Market in the Quad every month have proven to be a huge success and the vendors truly enjoy the new customer base.



### Planting Seeds for Earth Day in the Quad 2012

One event the Environmental Conservation Organization puts on and helps organize every spring is Earth Day in the Quad. This year the event was held on Wednesday, April 18, 2012. Many vendors, like the City of San Marcos and Edible San Marcos, came to the Quad to educate and inform the passersby about suitability and ways to “go green”. This year ECO gave away seedlings of various kinds of plants at their booth, and spent one of their recent scheduled meetings sewing them (above picture). Also, ECO participated in the biggest volunteering event of the year, Bobcat Build, on Saturday March 31, and helped organize monthly road side trash pick-ups in San Marcos.



<http://www.geo.txstate.edu/alumni/reunion.html>



*TX State continued from page 18:*

ability to inspire loyalty.

According to statistics ranking seniors' satisfaction with Texas' top 10 public universities, 91 percent of Texas State's seniors rated their experience as good or excellent.

Even though Texas State has a lot to brag about — including being the only Texas institution of higher learning to produce a president of the United States — it rarely does. Founded in 1903, Southwest Texas State Teachers' College was 27 years old when Lyndon B. Johnson graduated with a degree and headed off to a teaching job in South Texas.

On hearing the news about Texas State's designation as an emerging research institution, state Sen. Judith Zaffirini declared, "Wonderful. Bravo. It's about time." Zaffirini, D-Laredo, leads the senate's Higher Education Committee.

Texas State deserves that accolade and many more.



## Department of Geography Alumni Reunion and Student Celebration

The 18th annual ARSC celebration is scheduled for April 28, 2012

Since 1994, the Geography Department has hosted the annual Alumni Reunion and Student Celebration to foster the continued involvement of Texas State geographers in the department, provide a social network for Geography students past and present, and most importantly to **"Celebrate the Spirit of Geography"**. This portion of our website is dedicated to serving geographers both accomplished and aspiring.

Whether you're here to catch up with old friends, visit the faculty, recruit aspiring young geographers, or just want to talk geography, we're **always** glad to see you.

### 2012 Schedule of Events:

2:30 p.m. — Invitation only Donor Reception

3:00 p.m.—5:00 p.m. Scholarship and Awards formal program—Centennial Hall Teaching Theater

5:00 p.m. Meet at Sean Patrick's for fun, food and camaraderie.

This year we are partnering with KTSW's MR Fest —

There will be 100 artists performing in 13 locations around the San Marcos Square!

<http://ktsw.txstate.edu/promotions/mrfest.html>







Texas State University-San Marcos  
 Department of Geography  
 18<sup>th</sup> Annual Alumni Reunion & Student Celebration  
 Saturday, April 28, 2012  
 Scholarship and Awards presentation at the Centennial Hall Teaching Theatre  
 3:00 – 5:00 PM  
 Food and entertainment in conjunction with  
 KTSW 89.9's MRfest in downtown San Marcos  
 5:00 PM – ???  
 Registration Form



<b>Name(s) of</b>			
<b>Registrant(s):</b>			
<b>Address:</b>			
<b>Phone:</b>		<b>E-Mail:</b>	

**Award Recipients, Scholarship Recipients, and Volunteers:**

Number of: Award Recipients \_\_\_\_\_  
 Scholarship Recipients \_\_\_\_\_  
 Volunteers \_\_\_\_\_



**Students, Alumni, Faculty, Staff, and Friends of Geography:**

Number of: Students \_\_\_\_\_  
 Alumni \_\_\_\_\_  
 Faculty \_\_\_\_\_  
 Staff \_\_\_\_\_  
 Friends of Geography \_\_\_\_\_  
 Children Under 12 \_\_\_\_\_



**TOTAL NUMBER OF PEOPLE REGISTERED:** \_\_\_\_\_

\*\*\*\*\*

Return this form to:

Alumni Reunion and Student Celebration  
 Attn.: Patricia Hell-Jones  
 Department of Geography  
 Texas State University – San Marcos  
 San Marcos, TX 78666  
 Phone: (512) 245-2170 FAX: (512) 245-8353 E-mail: [ph19@txstate.edu](mailto:ph19@txstate.edu)  
 Visit our website: <http://www.geo.txstate.edu>

**REGISTRATION PRIOR TO**  
**5:00 PM FRIDAY, APRIL 27, 2012 =**  
**SPECIAL RECOGNITION AT**  
**MR FEST!!!**