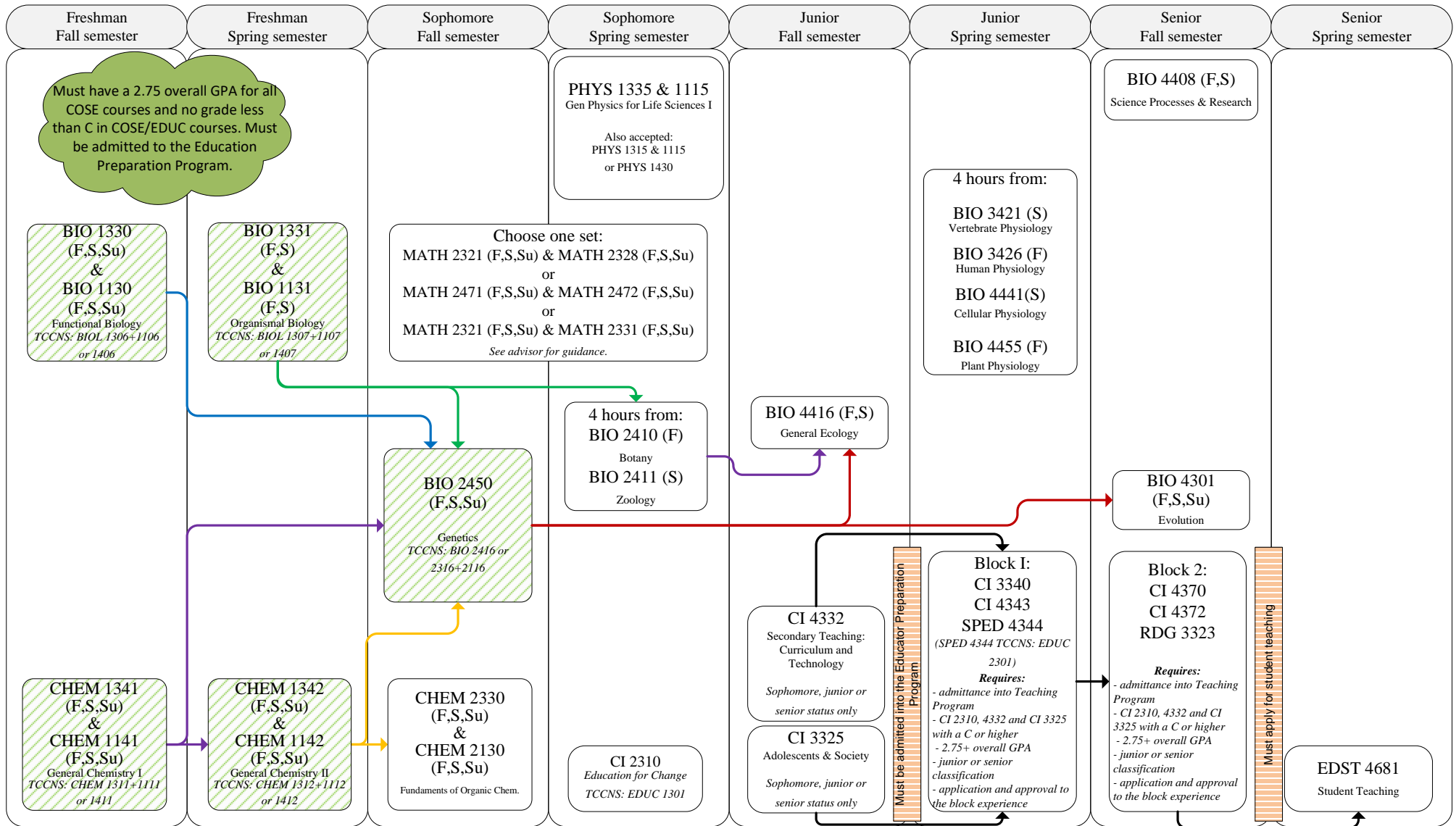


BS – Biology & Education: Life Science Teacher Certification (SC-BS/BIO/EDUC/SLLS) 2022 Catalog year: College of Science and Engineering



This is not an official degree audit and it is subject to change. This chart is intended to be used by students who start out at Texas State. Please contact the College of Science Undergraduate Advising Center for advising.

Note: In addition to major courses, students must also complete all core and minor requirements (if applicable) and any other requirements for graduation.

KEY:
Arrows indicate prerequisites.
Arrows with dotted lines indicate co-requisites.
Arrows with dash lines are recommended prerequisites.
Courses taught specific semesters are indicated with the following codes:
F-Fall
Su-Summer Session I or II
S-Spring

Required WI courses: BIO 4416, ENG 3303
Additional WI courses: BIO 3308, 4420, 4446, 4454

Core courses must be completed:

- ___ 6 credits Core 010
 - ___ 3 credits Core 020
 - ___ 6 credits Core 030
 - ___ 3 credits Core 040
 - ___ 3 credits Core 050
 - ___ 6 credits Core 060
 - ___ 6 credits Core 070
 - ___ 3 credits Core 080
 - ___ 3 credits Core 090
 - ___ 3 credits Core 090, 091, 092, 093, and 094
 - TXST options: ENG 1310, ENG 1320, ENG 1321
 - BIO required course: MATH 2321 or 2471
 - BIO required course: CHEM 1341/1141 & CHEM 1342/1142
 - TXST options: PHIL 1305 or 1320
 - TXST options: ART 2313, DAN 2313, MU 2313, TH 2313
 - TXST options: [HIST 1310/2327/2381] and [HIST 1320/2328/2382]
 - TXST options: POST 2310 & POST 2320
 - TXST options: ANTH 1312/ECO 2301/ECO 2314/GEO 1310/PSY 1300/SOCI 1310
 - BIO SCED required course: COMM 1310
- See catalog for options: <http://mycatalog.txstate.edu/undergraduate/general-education-core-curriculum/>
US 1100 may be required for some students. Consult with an advisor regarding course choices.