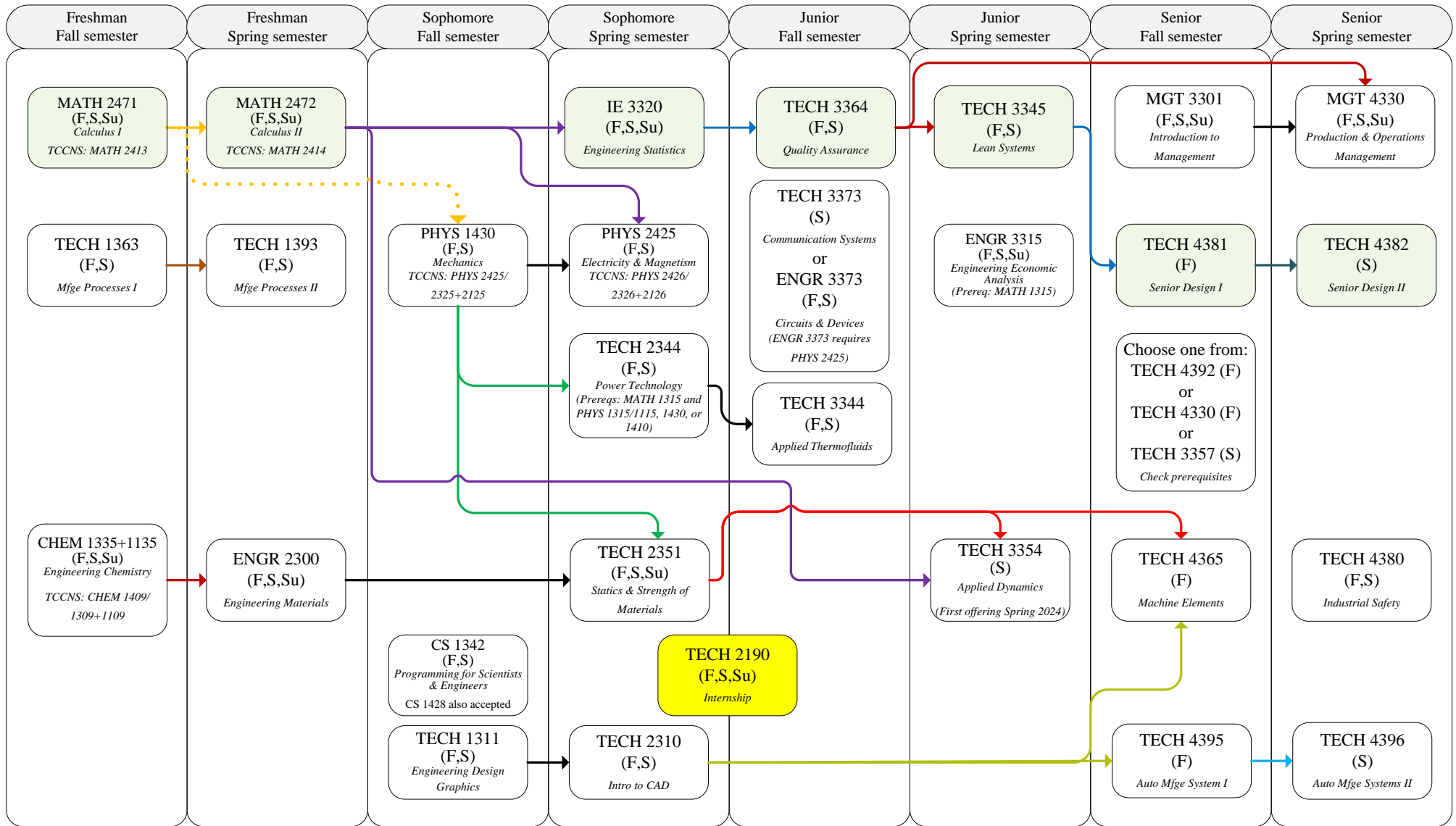


BS - Engineering Technology: Mechanical Engineering Technology (SC-BS/ET/MET) 2023 Catalog year: College of Science and Engineering



This is not an official degree audit and it is subject to change. This chart is intended to be used by students who start out at Texas State. Please contact the College of Science and Engineering Undergraduate Advising Center for advising.

Note: In addition to major courses, students must also complete all core and minor requirements (if applicable) and any other requirements for graduation.

KEY:

- Arrows indicate prerequisites.
 - Arrows with dotted lines indicate co-requisites.
 - Arrows with dash lines are recommended prerequisites.
 - Courses taught in specific semesters are indicated with the following codes:
- | | |
|----------|---------------------------|
| F-Fall | Su-Summer Session I or II |
| S-Spring | |

Required WI courses: TECH 3345, TECH 4380, TECH 4381

Core courses must be completed:

- ___ 6 credits Core 010
 - ___ 3 credits Core 020
 - ___ 6 credits Core 030
 - ___ 3 credits Core 040
 - ___ 3 credits Core 050
 - ___ 6 credits Core 060
 - ___ 6 credits Core 070
 - ___ 3 credits Core 080
 - ___ 6 credits Core 090, 091, 092, 093, and 094
 - TXST options: ENG 1310, ENG 1320, ENG 1321, ENG 3303, COMM 1310
 - ET required course: MATH 2471
 - ET required courses: PHYS 1430 + CHEM 1335/1135
 - ET required course: PHIL 1320
 - TXST options: ART 2313, DAN 2313, MU 2313, TH 2313
 - TXST options: [HIST 1310/2327/2381] and [HIST 1320/2328/2382]
 - TXST options: POSI 2310 & POSI 2320
 - ET required course: ECO 2301
 - ET required courses: MATH 2472 + PHYS 2425
- US 1100 may be required for some students. Consult with an advisor regarding course choices.