

Fall 2012 Instructional Space Usage Efficiency Report

Texas State University-San Marcos

April 3, 2013

Member of The Texas State University System

Contents

EXECUTIVE SUMMARY AND RECOMMENDATIONS	3
REVIEWING, COMPARING AND EXAMINING THE DATA	5
Table 1: Instructional Hours and Sections, Fall 2012 and Fall 2011.....	5
SPACE USAGE EFFICIENCY MEASUREMENTS	5
Table 2: Facilities Demand Scoring.....	6
Table 3: Utilization Rate Scoring	6
Table 4: Classroom Utilization (2008-2012).....	7
Table 5: Class Laboratory Utilization (2008-2012)	7
Table 6: Average Percent Fill Scoring	8
Graph 1: Fall 2012 Average Percent Fill by Course Start Time	8
Table 7: Distribution of Course Sections, Average Weekly Instructional Hours and Average Percent Fill by Classroom Seating Capacity	9
CLASSROOM UTILIZATION AND AVERAGE PERCENT FILL	9
Table 8: Classroom Utilization Rate and Average Percent Fill by Building and Room	10
Table 8A: Classroom Utilization by College, at RRHEC, Teaching Theatres, and Registrar Controlled Classrooms	15
Table 8B: Classroom Utilization by Building	15
Table 9: Classrooms Used Outside Department Home Buildings.....	16
TEACHING THEATRE UTILIZATION AND AVERAGE PERCENT FILL	18
Table 10: Teaching Theatre Schedules	18
UTILIZATION OF CLASSROOMS AT THE ROUND ROCK CAMPUS	19
Table 11: Avery Building Classroom Utilization and Percent of Fill	19
UTILIZATION OF CLASSROOMS BY DAY AND HOUR	20
Table 12: Percent of Classrooms in Use by Day and Hour (Fall 2012)	22
Graph 2: Percent of Classrooms in Use for All Days of the Week.....	23

Graph 3: Percent of Classrooms in Use on Monday.....	23
Graph 4: Percent of Classrooms in Use on Tuesday.....	23
Graph 5: Percent of Classrooms in Use on Wednesday	24
Graph 6: Percent of Classrooms in Use on Thursday	24
Graph 7: Percent of Classrooms in Use on Friday	24
Table 13: Percent of Course Sections on Fridays and At or Before 8:00 am	25
CLASS LAB UTILIZATION AND AVERAGE PERCENT FILL	27
Table 14: Class Lab Utilization Rates and Average Percent Fill by Building and Room	28
Table 14A: Class Lab Utilization by College	30
USE OF ROOMS NOT CODED AS CLASSROOMS AND CLASS LABS	31
Table 15: Utilization of Rooms Not Coded as Classrooms and Class Labs	31
APPENDIX	32

EXECUTIVE SUMMARY AND RECOMMENDATIONS

The Fall 2012 Instructional Space Usage Efficiency Report analyzes how well Texas State makes use of designated teaching facilities. Although the primary focus of the report is 1st call classrooms and designated class laboratories, other types of rooms (e.g. conference rooms, meeting rooms and special class laboratories) are also examined. Details presented include hours per week of scheduled instruction, percent of student stations occupied, classrooms in use by time of day and various summary tables. The intent of the report is to comprehensively document actual space use and identify potential areas for improvement.

The CBM011-Facilities Room Inventory Report and the CBM005-Building and Room Report provide the data inputs to calculate space use efficiency. The CBM011 is a listing all rooms that are owned or leased by Texas State and is considered the official inventory of space and space functions by the Texas Higher Education Coordinating Board (Coordinating Board). The CBM005 is generated from the official class schedule (as reported to the Coordinating Board) and provides a listing of courses offered in rooms under the jurisdiction of Texas State. It is important to note that the CBM005 does not include every single course offered but only those courses that are assigned to a specific on-campus room, on definite days, which start at exact times for a specific length of time. For the fall 2012 semester over 1690 sections (mostly directed studies, thesis and off-campus sections) that were scheduled in San Marcos or Round Rock did not satisfy the criteria listed above and therefore were not included in the space use efficiency calculations. The CBM011 and CBM005 reports are submitted annually during the fall semester to the Coordinating Board for certification. Additional information about data inputs is available in the Appendix.

The methodology used to calculate space usage efficiency (SUE) was developed by the Coordinating Board in May 2009. It is a multi-measure approach that takes into account three (3) distinct variables. The SUE measures are;

- Facilities Demand - the global appropriateness of the university's roster of classrooms and class laboratories when compared to all scheduled courses that require rooms.
- Current Utilization Rate - average weekly hours of instruction scheduled in classrooms and class laboratories.
- Average Percent Fill - average percent of student stations occupied when a classroom or class laboratory is in use.

Points are awarded based on performance in each of the three variables and converted to a score by multiplying the points by a weighting factor. The scores are then summed to determine classroom or class laboratory SUE scores.

For fall 2012, Texas State earned a perfect SUE score of 200 from the Coordinating Board for classroom and class laboratory usage. In fact, Texas State has earned perfect SUE scores since the Coordinating Board introduced their model in May 2009. However, this year's perfect score for classrooms was marginal and performance scores decreased for class laboratories from fall 2011 to fall 2012.

- **Classroom SUE:** In order to attain a perfect score for classroom Facilities Demand an institution must average at least 45.0 hours of instruction per week; Texas State averaged 46 hours. A perfect score for classroom Current Utilization Rate requires an average of 38 or more hours of instruction per week; Texas State's average was exactly 38 hours. A perfect score for classroom Average Percent Fill requires an average of 65% or more seats occupied; Texas State averaged 69%.
- **Class Laboratory SUE:** In order to attain a perfect score for class laboratory Facilities Demand an institution must average at least 35.0 hours of instruction per week; Texas State averaged 48 hours. This is well above the benchmark but it is also a decrease of 19 hours from fall 2011. A perfect score for class laboratory Current Utilization Rate requires an average of 25 hours per week of instruction; Texas State average was 36 hours. This is a 3 hour decrease from fall 2011. A perfect score for class laboratory

Average Percent Fill requires an average of 75% or more seats occupied; Texas State averaged 77%. This is a 3% decrease from fall 2011.

It appears that the primary reason for the marginal classroom Demand and Utilization scores was a decrease in instructional hours caused by shorter course durations. In 2011 the average course duration for all courses was 112 minutes per session and the average course duration for courses taught in designated classrooms was 100 minutes. In 2012 the average for all courses dropped to 103 minutes per session and the classroom average dropped to 92 minutes. The primary reason for the decrease in class laboratory scores was simply an increase in the actual number of class laboratories on record. In 2011 there were 72 class laboratories on record, this number increased to 101 in 2012.

RECOMMENDATIONS

The following recommendations are offered to ensure that Texas State continues to meet or exceed the space efficiency benchmarks established by the Coordinating Board.

1. Departments should closely follow the classroom and teaching theater scheduling policy and procedures that are established by the Provost's Office to optimize student access to courses as well as maximize utilization rates. Details regarding the scheduling policy are available online at <http://www.provost.txstate.edu/pps/policy-and-procedure-statements/4-teaching/pps4-12.html>.
2. Review actual course durations (minutes per session) for accuracy. Discussions are underway with Institutional Reporting and the Registrar's Office regarding shorter course durations when compared to 2011. The average length of a course decreased by 12 minutes from 2011 to 2012. This negatively impacted Facilities Demand and Current Utilization Rate.
3. Increase the number of courses scheduled in classrooms at the Avery Building. On average, 15 hours of instruction were scheduled in 25 classrooms and only 2 of the classrooms were in use 50% or more of the Coordinating Board's maximum benchmark of 38 hours of instruction per week. When the Avery Building is removed from the SUE calculations, the Current Utilization Rate for classrooms at Texas State increases by 19 percent or 7.5 average hours per week.
4. Only schedule courses in meeting rooms or conference rooms as a last resort; 56 course sections (146 instructional hours) were scheduled in conference rooms and 37 course sections (180 hours) were scheduled in meeting rooms.
5. Departments should increase the number of courses scheduled during earlier morning instructional periods. When comparing 2012 classroom data to 2011, there was a 3% decrease in classroom use at 9:00 a.m. on Monday-Wednesday-Friday and a 4% decrease at 8:00 a.m. on Tuesday-Thursday.
6. Departments should pay attention to Average Percent Fill. If possible, anticipated enrollments should be matched to seating capacities.

REVIEWING, COMPARING AND EXAMINING THE DATA

Table 1 reflects the base numbers used for the fall 2012 SUE calculations and compares those numbers to the fall 2011 semester. As reported and certified in the CBM005, 14,767 instructional hours (4726 sections) were scheduled during the fall 2012 semester. When compared with fall 2011, the total number of sections taught increased by 190 but the actual number of instructional hours offered decreased by 331. The primary reason for the decrease relates to the average duration of the individual course periods. That is, the average course duration was 12 minutes shorter in fall 2012 than in fall 2011 as explained in the Executive Summary. The number of sections scheduled in designated classrooms during fall 2012 decreased by 133 sections and 164 hours. The number of sections scheduled in designated class laboratories increased by 289 sections and 943 hours. Sections taught in rooms not designated as classrooms or class laboratories decreased by 232 sections and 1110 hours. There were 11 fewer stacked sections and 116 fewer stacked hours.

Table 1: Instructional Hours and Sections, Fall 2012 and Fall 2011

	Fall 2012 Scheduled Hours	Sections 2012	Fall 2011 Scheduled Hours	Sections 2011	2012 to 2011 Comparison
Total instructional hours (CBM005)	14,767	4726	15,098	4536	-331 hours +190 section
Instructional hours offered in 214 classrooms	8484	2823	8648	2690	-164 hours -133 sections
Instructional hours offered in 101 class labs	4078	1160	3135	871	+943 hours +289 sections
Instructional hours offered in rooms not designated as classrooms or class labs	2205	743	3315	975	-1110 hours - 232 sections
Stacked Hours	1161	336	1277	347	-116 hours -11 sections

SPACE USAGE EFFICIENCY MEASUREMENTS

The fall 2012 Space Usage Efficiency Report released by the Coordinating Board shows that Texas State University achieved an overall score of 200, the highest possible score. The University of Houston, UT-Dallas and UT-San Antonio also received perfect scores.

Facilities Demand defines the global appropriateness of the teaching facilities compared to the academic activities that require rooms. It connects supply (number of classrooms or class labs) with demand (number of academic activities scheduled that require rooms). To calculate the demand measure, the total hours of classroom-type activity taught anywhere on campus (not just classrooms) is divided by the total number of classrooms. The same process is used for the lab activities. The benchmark to receive the maximum points for this variable is to average 45 hours and above per week for classroom activity and 35 hours and above per week for class laboratory activity.

Table 2 shows the scoring and weight of the Facilities Demand variable as defined by the Coordinating Board. Texas State’s hours per week (HPW) for classrooms was 46 (1 hour above the benchmark for maximum points) and the hours per week for class labs was 48 (13 hours above the benchmark for maximum points). The result for Texas State was a perfect score of 36 in both categories. For comparison purposes, in 2011 Texas State averaged 52 hours for Classroom Facilities Demand and 67 hours in Class Laboratory Facilities Demand. Specific calculations are explained in the Appendix.

Table 2: Facilities Demand Scoring

Facilities Demand					
Classroom (TXST Hours Per Week =46)			Class Laboratory (TXST Hours Per Week = 48)		
Hours Per Week	Points	Score (weight =9)	Hours Per Week	Points	Score (weight =9)
45.0 and above	4	36	35.0 and above	4	36
38.0-44.9	3	27	30.0-34.9	3	27
31.0-37.9	2	18	25.0-29.9	2	18
Below 31.0	1	9	Below 25.0	1	9

Utilization counts course sections taught in classrooms and class laboratories (stacked hours are excluded); the total number of weekly minutes taught in rooms coded as 110-Classrooms and 210-Class Laboratories is divided by 50 (number of minutes in an hour accounting for passing and room transition time); and then divided by the number of classrooms or class laboratories in the facilities inventory. The Coordinating Board’s utilization benchmarks are 38 hours and above of scheduled instruction per week for classrooms and 25 hours and above of scheduled instruction per week for class labs.

Table 3 shows the scoring and weight of the Utilization variable as defined by the Coordinating Board. Texas State’s average hours per week of instruction for classrooms was 38 hours (the minimum hours for maximum points) and the average hours per week of instruction for class labs was 36 hours (11 hours above the benchmark for maximum points). The result for Texas State was a perfect score of 32 in both categories. For comparison purposes, in 2011 Texas State averaged 41 hours for Classroom Utilization and 38 hours for Class Laboratory Utilization. Specific calculations are explained in the Appendix.

Table 3: Utilization Rate Scoring

Utilization Rates					
Classroom (TXST Hours Per Week = 38)			Class Laboratory (TXST Hours Per Week = 36)		
Hours Per Week	Points	Score (weight =8)	Hours Per Week	Points	Score (weight =8)
38.0 and above	4	32	25.0 and above	4	32
34.0-37.9	3	24	20.0-24.9	3	24
30.0-33.9	2	16	15.0-19.9	2	16
Below 30	1	8	Below 15	1	8

Tables 4 and 5 provide a five-year history of Texas State’s utilization rates with and without RRHEC for classrooms and class laboratories.

Table 4: Classroom Utilization (2008-2012)

Fall Semester	Number of Designated Classrooms	Average (50 Min) Hours Per Classroom	% Of CB Utilization Standard	San Marcos Campus Classrooms (without RRHEC)	San Marcos Campus Average Hours Per Classroom (without RRHEC)	% Of CB Utilization Standard (without RRHEC)
2012	214	38.1	100	189	45.6	119
2011	198	41.8	110	181	44.4	116
2010	183	40.9	108	167	43.1	113
2009	182	40.6	106	166	42.5	111
2008	168	38.2	100	152	40.7	107

Table 5: Class Laboratory Utilization (2008-2012)

Fall Semester	Number of Designated Class Labs*	Average (50 Min) Hours Per Class Lab	% Of CB Utilization Standard
2012	101	35.9	144
2011	72*	39.4	158
2010	70	38.4	154
2009	64	35.3	141
2008	56.45**	33.4	133

There are no class laboratories at the RRHEC.

*JCM 3107 was incorrectly classified as a class laboratory.

**RFM 4234 & RFM 4236 also served as research labs.

The percent of time dedicated to research is deducted.

Average Percent Fill assesses the number of seats in a classroom or class laboratory that are occupied when the rooms are in use. The Coordinating Board added this variable to the SUE Model in order to determine the appropriateness of use, the need for additional facilities, and opportunities for optimization. Average Percent Fill is computed by determining a student station occupancy rate (SSO) for each course period that is scheduled in a classroom or a class laboratory. For stacked courses, a sum of enrollments is used to generate a single enrollment number; SSO is a percentage equal to the sum of enrollment divided by available seats. The course period SSO percentage is rounded to the nearest hundredth and multiplied by the number of times the course meets each week. Stacked courses are combined to generate a single occurrence. The products of the SSO multiplied by occurrences are totaled by space use (i.e. classroom or class laboratory) and divided by the total number of occurrences in each type of room. The Average Percent Fill benchmarks set by the Coordinating Board are 65% and above for classrooms and 75% and above for class laboratories.

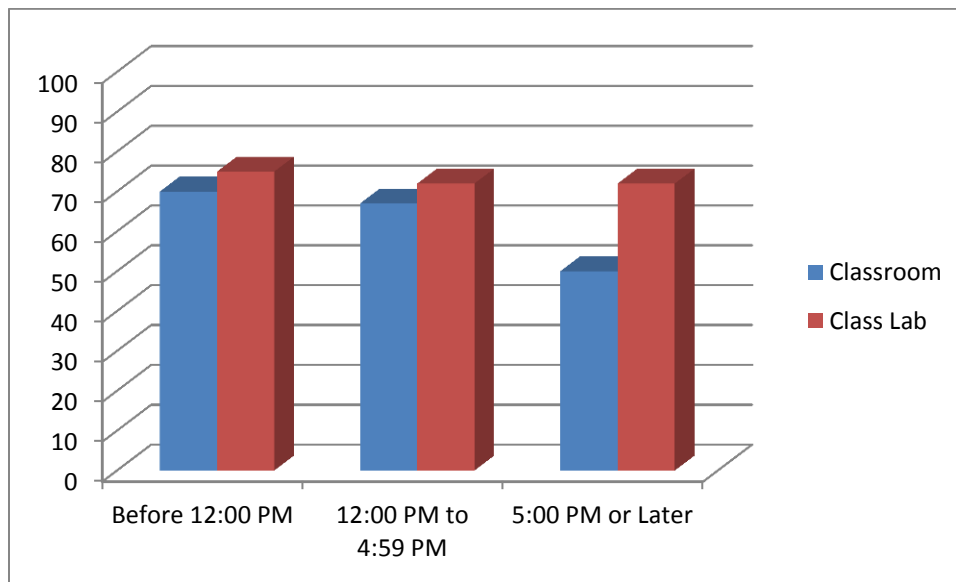
Table 6 on the next page shows the scoring and weight of the Average Percent Fill variable as defined by the Coordinating Board. Texas State’s Average Percent Fill for classrooms is 69% (4 percentage points above the benchmark for maximum points) and 77% for class laboratories (2 percentage points above the benchmark for maximum points). The result for Texas State was a perfect score of 32 in both categories. For comparison purposes, in 2011 Texas State’s Average Percent Fill for classrooms was 69% and the Average Percent Fill for class laboratories was 77%. Specific calculations are explained in the Appendix. Note: changes to the facilities inventory between 2011 and 2012 resulted in an additional 924 classroom seats and 944 class lab seats as explained on page 9 and page 27.

Table 6: Average Percent Fill Scoring

Average Percent Fill					
Classroom (TXST Average Percent Fill = 69%)			Class Laboratory (TXST Average Percent Fill = 77%)		
Percent of Seats	Points	Score (weight =8)	Percent of Seats	Points	Score (weight =8)
65% and above	4	32	75% and above	4	32
55.0%-64.9%	3	24	65.0% -74.9%	3	24
45.0%-54.9%	2	16	55.0%-64.9%	2	16
Below 45%	1	8	Below 55.0%	1	8

Graph 1 illustrates fall 2012 Percent of Fill by course start time for the morning (before 12:00 pm), afternoon (12:00 pm to 4:59 pm) and evening periods (5:00 pm and later).

Graph 1: Fall 2012 Average Percent Fill by Course Start Time



There are 12,828 seats distributed among 214 classrooms at Texas State; 11,921 seats in 189 San Marcos campus classrooms and 907 seats in 25 classrooms at Round Rock. The number of classroom seats range from 18 to 398 on the San Marcos campus and 27 to 48 at Round Rock. Table 7 on the following page provides utilization and average percent fill information for all 214 classrooms by seating capacity. In total, there are 2885 seats distributed among 101 class laboratories on the San Marcos campus and the number of class laboratory seats range from 11 to 150. There were no designated class laboratories in Round Rock on record for the fall 2012 semester.

Table 7: Distribution of Course Sections, Average Weekly Instructional Hours and Average Percent Fill by Classroom Seating Capacity

SEATS	CLASSROOMS	SECTIONS	AVERAGE WEEKLY INSTRUCTIONAL HOURS (benchmark is 38 weekly hours)	PERCENT FILL (benchmark is 65%)
25 or less	27	349	38.8	80
26 - 50	118	1523	36.8	61
51 - 75	25	369	42.1	56
76 - 100	15	213	40.1	49
101 - 125	13	161	37.9	62
126 - 150	6	68	33.9	73
151 - 175	2	24	35.6	69
176 - 200	1	11	35.4	79
Over 200	7	105	44.7	82

For fall 2012, classrooms with 26 to 50 seats and 101 to 200 seats fell below the Coordinating Board benchmark for utilization of 38 average weekly hours of instruction. Classrooms with 26 to 125 seats fell below the Coordinating Board benchmark of 65% for Average Percent Fill.

CLASSROOM UTILIZATION AND AVERAGE PERCENT FILL

A classroom is defined by the Coordinating Board as a room “used for scheduled instruction referred to as lecture rooms, demonstration rooms, seminar rooms, and general-purpose classrooms. Classrooms can be equipped with tablet armchairs, tables and chairs (as in a seminar room), or similar types of seating. They also can be furnished with special equipment, including multimedia or telecommunications equipment, appropriate to a specific area of study if the room is suitable for use by other classes.

In fall 2011 there were 198 classrooms on inventory. The following space use changes were made for fall 2012. The net result is 214 classrooms.

- Rooms removed from the inventory of classrooms:
 - 9 classrooms were taken out of service for the renovation of Comal (Psychology)
 - Freeman Aquatic Biology 102 was reclassified to a meeting room
 - Joann Cole Mitte 1113A and 1128 were reclassified to class labs
 - Health Professions 218 was reclassified to a class lab
 - Evans Liberal Arts 283 was remodeled as meeting rooms
 - Family and Consumer Sciences 283 was reclassified to a meeting room
 - Old Main 238 was reclassified to a class lab

- Rooms added to the inventory of classrooms:
 - Undergraduate Academic Center opened with 15 new classrooms
 - Supple Science 153A (previously classified as a class lab)
 - Academic Services Building North 150 (previously classified as an assembly room)
 - Academic Services Building South 112 (previously classified as a conference room)
 - Music 112, 123, 124 & 125 (previously classified as class labs)
 - Evans Liberal Art 225 (previous classified as a special class lab)
 - Flowers Hall 107 & 127 (previously classified as offices)
 - 8 meeting rooms in the Avery Building were reclassified as classrooms

The following tables provide the number of sections (SECT), instructional hours per week (HRS), utilization rate (UTIL%), seating capacity (SEATS), Average Percent Fill (PF) and 1st call department for each designated

classroom listed in the facilities inventory for fall 2012. Tables reflecting summaries by College, at RRHEC, for Teaching Theatres, and Registrar Controlled Classrooms (Table 8A) and by Building (Table 8B) follow.

Table 8: Classroom Utilization Rate and Average Percent Fill by Building and Room

BUILDING	ROOM	SECT	HRS	UTIL%	SEATS	PF	1ST CALL
Academic Services Building North	00150	7	22.4	59	110	55	Curriculum/Instructn
Academic Services Building South	00112	34	34	89	22	88	University College
Academic Services Building South	00315	16	50.4	133	250	81	Biology
Agriculture	00202	16	42	111	48	63	Agriculture
Agriculture	00204	14	40.2	106	108	46	Agriculture
Alkek Library	00250	15	40.8	107	386	87	Registrar
Avery Building	00123	5	17	45	33	61	RRHEC
Avery Building	00124	5	17	45	30	65	RRHEC
Avery Building	00204	4	13.8	36	36	26	RRHEC
Avery Building	00220	3	9.8	26	36	53	RRHEC
Avery Building	00308	5	17	45	36	46	RRHEC
Avery Building	00312	4	13.6	36	31	40	RRHEC
Avery Building	00313	4	13.4	35	28	58	RRHEC
Avery Building	00318	6	20.2	53	36	52	RRHEC
Avery Building	00357	4	13.6	36	30	49	RRHEC
Avery Building	00358	2	6.8	18	32	25	RRHEC
Avery Building	00362	4	13.6	36	32	67	RRHEC
Avery Building	00363	4	13.6	36	36	46	RRHEC
Avery Building	00364	5	16.6	44	27	44	RRHEC
Avery Building	00366	5	16.8	44	28	23	RRHEC
Avery Building	00368	3	10.2	27	35	38	RRHEC
Avery Building	00403	4	13.6	36	48	59	RRHEC
Avery Building	00404	4	13.6	36	48	69	RRHEC
Avery Building	00405	7	23.2	61	48	55	RRHEC
Avery Building	00406	4	13.6	36	48	44	RRHEC
Avery Building	00408	4	13.6	36	48	73	RRHEC
Avery Building	00414	3	10.2	27	31	61	RRHEC
Avery Building	00420	4	13.6	36	32	22	RRHEC
Avery Building	00451	5	17.2	45	40	62	RRHEC
Avery Building	00453	4	13.6	36	46	50	RRHEC
Avery Building	00454	5	17	45	32	89	RRHEC
Centennial Hall	00100	14	44.2	116	32	81	Modern Languages
Centennial Hall	00101	17	54.4	143	32	80	Modern Languages
Centennial Hall	00102	19	58.8	155	33	84	Comm Studies
Centennial Hall	00103	16	51.2	135	42	68	Comm Studies
Centennial Hall	00106	15	47.2	124	30	79	Modern Languages
Centennial Hall	00157	15	47.4	125	387	86	Registrar
Centennial Hall	00215	17	49.4	130	38	64	Modern Languages
Centennial Hall	00217	18	55.2	145	35	65	Modern Languages
Centennial Hall	00218	16	46.4	122	30	79	Modern Languages
Centennial Hall	00221	13	42.8	113	18	72	Modern Languages
Centennial Hall	00318	16	51.4	135	36	75	Comm Studies
Centennial Hall	00400	20	55.8	147	30	87	Comm Studies

BUILDING	ROOM	SECT	HRS	UTIL%	SEATS	PF	1ST CALL
Centennial Hall	00402	17	48	126	30	83	Comm Studies
Centennial Hall	00410	15	48	126	31	90	Comm Studies
Centennial Hall	G01	11	34.4	91	103	79	Chem/Biochemistry
Chemistry	00100	13	40.8	107	115	81	Chem/Biochemistry
Chemistry	00105	12	31	82	30	62	Chem/Biochemistry
College of Education	01007	10	32.4	85	107	66	Curriculum/Instructn
College of Education	02127	17	55.6	146	48	53	Curriculum/Instructn
College of Education	02128	18	47.6	125	48	59	Curriculum/Instructn
College of Education	03038	16	43.4	114	40	60	Curriculum/Instructn
College of Education	03039	14	34	89	32	65	Curriculum/Instructn
College of Education	03041	14	45.4	119	33	72	Curriculum/Instructn
College of Education	03066	16	50.76	134	40	56	Curriculum/Instructn
College of Education	03068	11	36.2	95	28	92	Curriculum/Instructn
College of Education	03069	9	31.76	84	26	65	Curriculum/Instructn
College of Education	04005	13	38.2	101	39	53	CLAS
College of Education	04007	13	35.8	94	40	58	CLAS
College of Education	04008	15	44.8	118	40	55	CLAS
College of Education	04009	18	47	124	34	59	CLAS
College of Education	04039	21	48.4	127	26	75	CLAS
College of Education	04061	7	23.8	63	28	40	CLAS
Derrick Hall	00113	11	31.4	83	169	59	Sociology
Derrick Hall	00118	7	22.4	59	25	76	Modern Languages
Derrick Hall	00119	5	13.8	36	25	83	Modern Languages
Derrick Hall	00120	13	38.8	102	29	89	Mathematics
Derrick Hall	00121	15	41.2	108	34	64	Mathematics
Derrick Hall	00227	14	29.4	77	79	32	Philosophy
Derrick Hall	00229	12	37.8	99	40	89	Psychology
Derrick Hall	00230	33	33	87	30	65	University College
Derrick Hall	00234	17	51.6	136	70	64	Philosophy
Derrick Hall	00235	13	41.6	109	38	68	Computer Science
Derrick Hall	00237	15	47.2	124	40	81	Mathematics
Derrick Hall	00238	16	51	134	48	85	Mathematics
Derrick Hall	00239	35	35	92	30	63	University College
Derrick Hall	00240	15	47.6	125	49	62	Computer Science
Derrick Hall	00241	15	48.2	127	44	66	Computer Science
Derrick Hall	00326	17	52	137	49	74	Mathematics
Derrick Hall	00327	10	27.4	72	33	84	Mathematics
Derrick Hall	00328	17	52	137	49	66	Mathematics
Derrick Hall	00329	11	33	87	94	39	Sociology
Derrick Hall	00330	18	54.8	144	49	69	Mathematics
Derrick Hall	00331	19	58	153	49	65	Mathematics
Derrick Hall	00332	15	47.2	124	45	80	Mathematics
Derrick Hall	00333	16	50.4	133	49	62	Mathematics
Derrick Hall	00334	16	50.4	133	49	70	Mathematics
Derrick Hall	00336	16	50.6	133	49	75	Mathematics
Emmett & Miriam McCoy Hall	00105	14	41	108	48	71	Coll Business Admin
Emmett & Miriam McCoy Hall	00111	16	51.4	135	58	69	Coll Business Admin

BUILDING	ROOM	SECT	HRS	UTIL%	SEATS	PF	1ST CALL
Emmett & Miriam McCoy Hall	00113	14	45.6	120	58	55	Coll Business Admin
Emmett & Miriam McCoy Hall	00119	14	43.2	114	250	81	Coll Business Admin
Emmett & Miriam McCoy Hall	00124	11	34.8	92	60	92	Coll Business Admin
Emmett & Miriam McCoy Hall	00125	12	38.6	102	60	67	Coll Business Admin
Emmett & Miriam McCoy Hall	00126	13	42.4	112	98	72	Coll Business Admin
Emmett & Miriam McCoy Hall	00127	14	44.2	116	98	94	Coll Business Admin
Emmett & Miriam McCoy Hall	00222	18	42.4	112	42	69	Coll Business Admin
Emmett & Miriam McCoy Hall	00223	14	45.2	119	42	78	Coll Business Admin
Emmett & Miriam McCoy Hall	00224	11	33.4	88	42	73	Coll Business Admin
Emmett & Miriam McCoy Hall	00225	15	48.4	127	42	76	Coll Business Admin
Emmett & Miriam McCoy Hall	00233	13	39.8	105	155	80	Coll Business Admin
Emmett & Miriam McCoy Hall	00240	13	41.4	109	55	64	Coll Business Admin
Emmett & Miriam McCoy Hall	00241	12	38.4	101	55	83	Coll Business Admin
Emmett & Miriam McCoy Hall	00242	14	44.6	117	94	61	Coll Business Admin
Emmett & Miriam McCoy Hall	00243	15	48.2	127	88	53	Coll Business Admin
Emmett & Miriam McCoy Hall	00333	13	34	89	36	67	Coll Business Admin
Emmett & Miriam McCoy Hall	00335	13	42.2	111	36	75	Coll Business Admin
Emmett & Miriam McCoy Hall	00337	15	48.6	128	42	74	Coll Business Admin
Evans Liberal Arts	00114	9	27.4	72	128	59	Anthropology
Evans Liberal Arts	00116	12	38	100	131	83	Geography
Evans Liberal Arts	00118	7	22.4	59	129	91	Psychology
Evans Liberal Arts	00218	12	33	87	78	41	Political Science
Evans Liberal Arts	00220	14	39	103	35	69	Anthropology
Evans Liberal Arts	00222	12	46	121	40	70	Psychology
Evans Liberal Arts	00225	9	17.6	46	80	31	Anthropology
Evans Liberal Arts	00229	9	28.6	75	49	62	Anthropology
Evans Liberal Arts	00311	15	45	118	61	72	Geography
Evans Liberal Arts	00312	14	40	105	36	72	Geography
Evans Liberal Arts	00315	17	42.6	112	25	88	Geography
Evans Liberal Arts	00316	18	54.6	144	63	67	Geography
Family & Consumer Sciences	00135	15	48.4	127	84	71	Family/Consumer Sci
Family & Consumer Sciences	00158	10	32	84	116	80	Family/Consumer Sci
Family & Consumer Sciences	00182	10	28.6	75	30	92	Family/Consumer Sci
Family & Consumer Sciences	00188	13	39	103	60	80	Family/Consumer Sci
Family & Consumer Sciences	00189	12	38.2	101	60	80	Family/Consumer Sci
Flowers Hall	00107	10	32.8	86	25	77	English
Flowers Hall	00111	12	38.2	101	25	79	English
Flowers Hall	00112	12	37.8	99	25	82	English
Flowers Hall	00113	14	44.6	117	64	36	English
Flowers Hall	00127	9	26.6	70	25	81	English
Flowers Hall	00129	14	44.2	116	33	66	English
Flowers Hall	00130	15	47.4	125	64	34	English
Flowers Hall	00224	15	47.2	124	25	83	English
Flowers Hall	00225	13	41.2	108	25	83	English
Flowers Hall	00226	13	41	108	25	88	English
Flowers Hall	00227	15	45.6	120	25	87	English
Flowers Hall	00228	13	41	108	25	87	English

BUILDING	ROOM	SECT	HRS	UTIL%	SEATS	PF	1ST CALL
Flowers Hall	00229	12	38.2	101	64	43	English
Flowers Hall	00252	13	41.6	109	25	82	English
Flowers Hall	00254	16	48.4	127	25	84	English
Flowers Hall	00255	14	44.4	117	25	83	English
Flowers Hall	00256	14	44	116	25	84	English
Flowers Hall	00341	13	41.2	108	205	94	English
Flowers Hall	G12	13	42.2	111	24	81	English
Health Professions	00141	10	28.4	75	36	51	Coll/Health Prof
Health Professions	00143	17	55.4	146	56	72	Coll/Health Prof
Health Professions	00213	16	53	139	49	71	School/Social Work
Health Professions	00214	13	42.8	113	49	60	School/Social Work
Health Professions	00216	14	45	118	30	75	Coll/Health Prof
Health Professions	00217	13	33.6	88	30	75	Coll/Health Prof
Health Professions	00230	16	45.4	119	69	64	Coll/Health Prof
Health Professions	00233	15	45.4	119	48	68	Coll/Health Prof
Hines Academic Center	00201	14	44.6	117	62	56	Registrar
Hines Academic Center	00202	10	31.4	83	62	66	Registrar
Hines Academic Center	00203	16	51.2	135	60	50	Criminal Justice
Hines Academic Center	00204	8	22.4	59	132	67	Sch. of Journalism
Hines Academic Center	00205	14	46	121	128	63	Criminal Justice
Hines Academic Center	00206	14	44.2	116	92	46	Criminal Justice
Hines Academic Center	00207	16	51.2	135	84	44	Criminal Justice
Jerome & Catherine Supple Science	00112	12	36.8	97	117	77	Physics
Jerome & Catherine Supple Science	00116	16	48.8	128	222	67	Biology
Jerome & Catherine Supple Science	00153-A	4	14.8	39	38	73	Biology
Jerome & Catherine Supple Science	00257-A	14	29.4	77	52	60	Biology
Joann Cole Mitte	02118	11	38.8	102	22	78	School Art & Design
Joann Cole Mitte	02121	11	35.4	93	190	79	School Art & Design
Joann Cole Mitte	04113	9	58.8	155	22	87	School Art & Design
Joann Cole Mitte	04127	9	51.2	135	20	95	School Art & Design
Joann Cole Mitte	04127-A	8	48.4	127	20	93	School Art & Design
Jowers Center	A202	15	45.8	121	63	67	Health/Human Perf
Jowers Center	A203	12	37.2	98	49	64	Health/Human Perf
Jowers Center	A204	11	32.6	86	49	59	Health/Human Perf
Jowers Center	A205	14	40.8	107	49	59	Health/Human Perf
Jowers Center	A206	16	38.2	101	49	45	Health/Human Perf
Jowers Center	A207	14	37.6	99	56	55	Health/Human Perf
Jowers Center	A209	15	41.8	110	89	68	Health/Human Perf
Jowers Center	A210	11	35.6	94	49	74	Health/Human Perf
Jowers Center	A211	10	31.6	83	70	74	Health/Human Perf
Lampasas	00502-B	13	35	92	19	77	Honors College
LBJ Student Center & Visitor Ctr	4-16.1	13	41	108	398	91	Registrar
Music	00122	10	30.2	79	28	51	Music
Music	00123	8	23.8	63	23	81	Music
Music	00124	17	45	118	28	70	Music
Music	00125	15	44.5	117	40	40	Music
Music	00214	9	26.8	71	62	50	Music

BUILDING	ROOM	SECT	HRS	UTIL%	SEATS	PF	1ST CALL
Old Main	00201	15	46.8	123	49	48	Sch. of Journalism
Old Main	00232	13	45	118	49	46	Sch. of Journalism
Old Main	00234	10	27.8	73	77	57	Sch. of Journalism
Pedernales	00114	10	28.2	74	32	68	Occupational Educ
Roy F. Mitte	03224	12	37.2	98	107	59	Engineering Technol
Roy F. Mitte	03241	10	31.8	84	105	50	Engineering Technol
Roy F. Mitte	04233	16	43.8	115	42	43	Engineering Technol
Roy F. Mitte	05242	14	44.8	118	60	64	Engineering
Sabinal	00101	3	20.4	54	25	95	School Art & Design
Taylor-Murphy History	00101	16	51.6	136	120	57	History
Taylor-Murphy History	00104	15	48.6	128	120	61	History
Taylor-Murphy History	00106	15	48.6	128	40	57	History
Taylor-Murphy History	00110	16	47.2	124	35	77	History
Taylor-Murphy History	00201	16	51.6	136	40	68	History
Theatre Center	00201	7	22.2	58	30	77	Theatre
Undergraduate Academic Center	00105	15	47.2	124	150	94	Political Science
Undergraduate Academic Center	00205	13	41.8	110	32	90	Psychology
Undergraduate Academic Center	00208	14	44.6	117	102	73	Psychology
Undergraduate Academic Center	00209	12	39.8	105	102	79	Sociology
Undergraduate Academic Center	00305	15	47	124	32	65	Political Science
Undergraduate Academic Center	00306	14	46.4	122	32	65	Political Science
Undergraduate Academic Center	00308	15	48	126	80	38	Political Science
Undergraduate Academic Center	00309	14	43.6	115	32	71	Political Science
Undergraduate Academic Center	00310	15	48.2	127	80	44	Political Science
Undergraduate Academic Center	00405	26	42.8	113	20	85	Sociology
Undergraduate Academic Center	00406	15	48.2	127	48	51	Political Science
Undergraduate Academic Center	00408	15	47.8	126	48	85	Psychology
Undergraduate Academic Center	00409	15	44	116	48	85	Sociology
Undergraduate Academic Center	00410	14	42	111	32	81	Sociology
Undergraduate Academic Center	00411	12	28.4	75	48	75	Sociology

Table 8 Summary:

- 133 of 214 of classrooms (62%) were scheduled with 38.0 or more hours per week of instruction. The Average Percent Fill (PF) for these 133 classrooms is 70%;
- 17 of 214 classrooms (8%) were scheduled with 34.0 to 37.9 hours per week of instruction. The average PF for these 17 rooms is 74%;
- 16 of 214 classrooms (7%) were scheduled with 30.0 to 33.9 hours per week of instruction. The average PF for these 16 rooms 63%;
- 48 of 214 (23%) had less than 30 hours per week of instruction. The average PF for these rooms is 59%.

Table 8A: Classroom Utilization by College, at RRHEC, Teaching Theatres, and Registrar Controlled Classrooms

COLLEGE	CLASSROOMS	NON-STACKED SECTIONS	HOURS	AVERAGE HOURS	UTIL%	PF
Applied Arts	14	189	585.0	41.8	110	65
McCoy Business	20	274	847.8	42.4	112	73
Education	25	337	978.7	39.1	103	62
Fine Arts	22	266	900.7	40.9	108	73
Health Professions	6	85	253.2	42.2	111	68
Honors	1	13	35.0	35.0	92	77
Liberal Arts	65	887	2688.2	41.4	109	71
Registrar Controlled	5	67	205.2	41.0	108	77
Round Rock	25	107	362.2	14.5	38	51
Science	28	396	1202.4	42.9	113	70
University College	3	102	102.0	34.0	89	72

Table 8B: Classroom Utilization by Building

BUILDING	CLASSROOMS	NON-STACKED SECTIONS	HOURS	AVERAGE HOURS	UTIL	PF
Academic Services Building North	1	7	22.4	22.4	59	55
Academic Services Building South	2	50	84.4	42.2	111	85
Agriculture	2	30	82.2	41.1	108	55
Alkek Library	1	15	40.8	40.8	107	87
Avery Building	25	107	362.2	14.5	38	51
Centennial Hall	15	239	734.6	49.0	129	78
Chemistry	2	25	71.8	35.9	94	72
College of Education	15	212	615.1	41.0	108	62
Derrick Hall	25	391	1045.8	41.8	110	69
Emmett & Miriam McCoy Hall	20	274	847.8	42.4	112	73
Evans Liberal Arts	12	148	434.2	36.2	95	67
Family & Consumer Sciences	5	60	186.2	37.2	98	81
Flowers Hall	19	250	787.6	41.5	109	75
Health Professions	8	114	349.0	43.6	115	67
Hines Academic Center	7	92	291.0	41.6	109	56
Jerome & Catherine Supple Science	4	46	129.8	32.5	85	69
Joann Cole Mitte	5	48	232.6	46.5	122	86
Jowers Center	9	118	341.2	37.9	100	63
Lampasas	1	13	35.0	35.0	92	77
LBJ Student Center & Visitor Ctr	1	13	41.0	41.0	108	91
Music	5	59	170.3	34.1	90	58
Old Main	3	38	119.6	39.9	105	50
Pedernales	1	10	28.2	28.2	74	68

BUILDING	CLASSROOMS	NON-STACKED SECTIONS	HOURS	AVERAGE HOURS	UTIL	PF
Roy F. Mitte	4	52	157.6	39.4	104	54
Sabinal	1	3	20.4	20.4	54	95
Taylor-Murphy History	5	78	247.6	49.5	130	64
Theatre Center	1	7	22.2	22.2	58	77
Undergraduate Academic Center	15	224	659.8	44.0	116	72

For the most part, departments are teaching in their “home” buildings and/or their own 1st call classrooms. However, as shown below in Table 9, 334 course sections are taught outside of home buildings.

Table 9: Classrooms Used Outside Department Home Buildings

DEPARTMENT	CLASSROOMS USED OUTSIDE HOME BUILDING	SECTIONS TAUGHT OUTSIDE HOME BUILDING
Philosophy	37	74
University Seminar	29	86
Communications	20	32
Modern Languages	11	28
Mathematics	10	16
Mass Communications	8	14
CLAS	5	5
Political Science	5	13
Social Work	5	6
Anthropology	4	6
Biology	8	4
Healthcare Administration	4	4
English	3	3
History	3	4
Psychology	3	5
Chemistry	2	3
Curriculum & Instruction	2	2
General Studies	2	2
Health and Human Performance	2	5
Music	2	3
Theatre	2	2
Women's Studies	2	2
Aerospace Studies	1	1
Communication Disorders	1	4

DEPARTMENT	CLASSROOMS USED OUTSIDE HOME BUILDING	SECTIONS TAUGHT OUTSIDE HOME BUILDING
Criminal Justice	1	1
Family and Consumer Sciences	1	1
Military Science	1	2
Occupational Education	1	1
Physical Therapy	1	2
Physics	1	1

TEACHING THEATRE UTILIZATION AND AVERAGE PERCENT FILL

The three teaching theatres, Alkek Library 250, Centennial 157 and LBJ Student Center 4-16.1 are scheduled by the Registrar's Office. Eleven (11) academic departments taught 43 course sections in the 3 theatres: Anthropology (2), Biology (2), Communication Studies (5), English (4), History (3), Mass Comm (4), Math (7), Philosophy (2), Political Science (8), Psychology (5) and Theatre (1). The combined average weekly hours of instruction for the 3 theatres were 43.1 hours or 113% of the Coordinating Board Utilization benchmark. The Average Percent Fill (PF) for the 3 teaching theatres is 88%.

Table 10: Teaching Theatre Schedules

Alkek Library 250: 15 Sections, 40.8 Hours, 107 % of CB Benchmark, Seats 386, PF 87%

	MONDAY	WEDNESDAY	FRIDAY		TUESDAY	THURSDAY
8:00 am	MATH 1315	MATH 1315	MATH 1315	8:00 am	HIST 1320	HIST 1320
9:00 am	MATH 1311	MATH 1311	MATH 1311	9:30 am	PHIL 1305	PHIL 1305
10:00 am	PSY 4322	PSY 4322	PSY 4322	11:00 am	BIO 1320	BIO 1320
11:00 am	POSI 2310	POSI 2310	POSI 2310	12:30 pm	TH 2313	TH 2313
12:30 pm	MATH 1315	MATH 1315				
2:00 pm	ENG 2340	ENG 2340		2:00 pm	MATH 1315	MATH 1315
3:30 pm	MC 3319	MC 3319		3:30 pm	HIST 1310	HIST 1310

Centennial Hall 157: 15 Sections, 47.4 Hours, 125% of CB Benchmark, Seats 387, PF 86%

	MONDAY	WEDNESDAY	FRIDAY		TUESDAY	THURSDAY
8:00 am	ENG 2320	ENG 2320	ENG 2320	8:00 am	MC 1301	MC 1301
9:00 am	COMM 1310	COMM 1310	COMM 1310	9:30 am	COMM 1310	COMM 1310
10:00 am	PSY 3300	PSY 3300	PSY 3300	11:00 am	PSY 1300	PSY 1300
11:00 am	COMM 1310	COMM 1310	COMM 1310	12:30 pm	COMM 1310	COMM 1310
12:30 pm	POSI 2320	POSI 2320		2:00 pm	PSY 2311	PSY 2311
2:00 pm	ENG 2310	ENG 2310				
3:30 pm	POSI 2310	POSI 2310		3:30 pm	MC 3367	MC 3367
5:00 pm	COMM 1310			5:00 pm	POSI 2310	POSI 2310

LBJ Student Center 4-16.1: 13 Sections, 41.0 Hours, 108% of CB Benchmark, Seats 398, PF 91%

	MONDAY	WEDNESDAY	FRIDAY		TUESDAY	THURSDAY
8:00 am	PSY 1300	PSY 1300	PSY 1300	8:00 am	POSI 2310	POSI 2310
9:00 am	POSI 2310	POSI 2310	POSI 2310	9:30 am	ANTH 2414	ANTH 2414
10:00 am	POSI 2310	POSI 2310	POSI 2310	11:00 am	ANTH 1312	ANTH 1312
11:00 am	PHIL 1320	PHIL 1320		12:30 pm	MATH 1315	MATH 1315
12:30 pm	ENG 2360	ENG 2360				
2:00 pm	MC 3343	MC 3343		2:00 pm	POSI 2310	POSI 2310
3:30 pm	HIST 1320	HIST 1320		3:30 pm	BIO 1421	BIO 1421

UTILIZATION OF CLASSROOMS AT THE ROUND ROCK CAMPUS

As reported in the CBM005 report for fall 2012, 523 weekly hours of instruction (151 course sections) were scheduled at the Round Rock campus. Specifically, 480 weekly hours of instruction (139 course sections) were scheduled in the Avery building and 43 weekly hours of instruction (12 course sections) were scheduled in the School of Nursing building. After deducting instructional hours for “stacked” sections, 449 weekly instructional hours were scheduled in the Avery building. There were no stacked courses in the School of Nursing.

Avery Building- there were 362 weekly hours instruction (107 course sections) scheduled in 25 classrooms in the Avery building as reflected in Table 11. On average, 15 hours of instruction were scheduled in 25 classrooms and only 2 of the classrooms were in use 50% or more of the Coordinating Board’s maximum benchmark of 38 hours of instruction per week. The Average Percent Fill (i.e. the number of seats occupied) is 53%. This is 12 percentage points below the Coordinating Boards benchmark for maximum points. The Facilities Demand (i.e. global appropriateness of the teaching facilities when compared to the academic activities that require rooms) is 37 average hours (8 hours below the benchmark for maximum points). There are no designated class laboratories in the Avery building to be factored into the SUE Model.

Table 11: Avery Building Classroom Utilization and Percent of Fill

ROOM	SECT	HRS	UTIL%	SEATS	PF
00123	5	17	45	33	61
00124	5	17	45	30	65
00204	4	14	36	36	26
00220	3	9.8	26	36	53
00308	5	17	45	36	46
00312	4	14	36	31	40
00313	4	13	35	28	58
00318	6	20	53	36	52
00357	4	14	36	30	49
00358	2	6.8	18	32	25
00362	4	14	36	32	67
00363	4	14	36	36	46
00364	5	17	44	27	44
00366	5	17	44	28	23
00368	3	10	27	35	38
00403	4	14	36	48	59
00404	4	14	36	48	69
00405	7	23	61	48	55
00406	4	14	36	48	44
00408	4	14	36	48	73
00414	3	10	27	31	61
00420	4	14	36	32	22
00451	5	17	45	40	62
00453	4	14	36	46	50
00454	5	17	45	32	89

The characteristics of the student body and course offerings at the Avery building dictate evening usage of the facilities. Although these characteristics are significantly different than those of the San Marcos campus, by Coordinating Board rule the classrooms at Multi-Institution Teaching Centers (MITC) such as in Round Rock are held to the same space usage efficiency standards.

School of Nursing Building- there are currently no designated classrooms or class laboratories in the School of Nursing building. Therefore, the SUE model factors cannot be applied. The 44 hours of weekly instruction at the School of Nursing were applied to the University’s Facilities Demand score.

UTILIZATION OF CLASSROOMS BY DAY AND HOUR

Numerous universities use similar procedures to define instructional periods in order to create standardized and consistent schedules of courses. The most familiar is Monday, Wednesday, and Friday (MWF) and Tuesday, Thursday (TTH) course arrangements that employ uniform start times and session durations. The goal is to provide students optimal access to courses while affording faculty adequate time to pursuit and conduct research, serve on committees and provide convenient office hours for students. In addition, standardized course schedules are critical to maximizing classroom and class lab utilization. The following uniform class scheduling policy was approved beginning spring 2009:

- MWF morning classes begin at 8:00 a.m., 9:00 a.m., 10:00 a.m. and 11:00 a.m. for 50 minutes plus 10 minute passing time.
- MW classes begin at 12:30 pm, 2:00 pm, 3:30 pm, 5:00 pm, 6:30 pm, and 8:00 pm. MW morning lectures are allowed if Friday is used for lab. Departments are allowed to teach up to 10% of their classes MW, from 11:00 a.m. until 12:20 pm.
- With the Dean and Provost approvals, some classes may be offered at 11:00 a.m. MWF and conclude earlier in the semester.
- TH classes begin at 8:00 a.m., 9:30 a.m., 11:00 a.m., 12:30 pm, 2:00 pm, 3:30 pm, 5:00 pm, 6:30 pm, and 8:00 pm.
- No one-day a week morning classes allowed. 1 day-a-week classes are allowed 12:30 pm and later, if they begin at standard times.
- All classes must end no less than 10 minutes prior to the next scheduled class time.
- Graduate courses are exempt if not affecting first call room utilization.
- Any exception to these rules must be reviewed and accepted by the Class Scheduling Committee (CSC) whose membership shall be the Associate Vice President for Enrollment Management and Marketing (committee chair), the Registrar, the Dean of University College, a school director or departmental chair, and the Associate Vice President for Finance and Support Services.

During the fall 2012 semester, 102 different “day of week, start time, session duration” combinations were used to schedule 189 classrooms at the San Marcos campus. Table 12 on page 22 displays how these combinations translated to a percentage of classrooms occupied in 15 minute intervals by day of the week.

Classroom Use on Monday-Wednesday-Friday Mornings

On average, 125 of 189 classrooms (66%) were in use on Monday-Wednesday-Friday from 8:00 a.m. to 11:50 a.m. When comparing fall 2012 to fall 2011, the percentage of classrooms in use during this timeframe was unchanged at 66%. The following bullets compare the percentage of classrooms in use on Monday-Wednesday-Friday mornings by instructional period;

- 1% decrease in classrooms use from 8:00 a.m. to 8:50 a.m.
- 3% decrease from 9:00 a.m. to 9:50 a.m.
- 2% increase 10:00 a.m. to 10:50 a.m.
- 2% increase between 11:00 a.m. and 11:50 a.m.

Classroom Use on Tuesday-Thursday Mornings

On average, 155 of 189 classrooms (82%) were in use on Tuesday-Thursday from 8:00 a.m. to 12:20 p.m. When comparing fall 2012 to fall 2011, the percentage of classrooms in use during this timeframe increased 1%. The following bullets compare the percentage of classrooms in use on Tuesday-Thursday mornings by instructional period;

- 4% decrease in classroom use from 8:00 a.m. to 9:20 a.m.
- 1% decrease between 9:30 a.m. and 10:50 a.m.
- 6% increase from 11:00 a.m. to 12:20 p.m.

Classroom Use on Monday-Wednesday Afternoons

On average, 153 of 189 classrooms (81%) were in use from 12:30 p.m. to 4:50 p.m. on Monday-Wednesday afternoons. When comparing fall 2012 to fall 2011, the percentage of classrooms in use on Monday and Wednesday afternoons was unchanged at 81%. The following bullets compare the percentage of classrooms in use on Monday-Wednesday afternoons by instructional period;

- 4% decrease in classroom use from 12:30 p.m. to 1:45 p.m.
- 2% increase from 2:00 p.m. to 3:20 p.m.
- 2% increase from 3:30 p.m. to 4:50 p.m.

Classroom Use on Tuesday-Thursday Afternoons

On average, 167 of 189 classrooms (88%) were in use from 12:30 p.m. to 4:50 p.m. on Tuesday-Thursday afternoons. When comparing fall 2012 to fall 2011, the percentage of classrooms in use during this time increased 2%. The following bullets compare the percentage of classrooms in use on Tuesday-Thursday afternoons by instructional period;

- 1% increase in classroom use from 12:30 p.m. to 1:45 p.m.
- 2% increase from 2:00 p.m. to 3:20 p.m.
- 2% increase from 3:30 p.m. to 4:50 p.m.

Classroom Use on Friday Afternoons

On average, 13 of 189 classrooms (7%) were in use from 12:30 p.m. to 4:50 p.m. on Friday afternoons. When comparing fall 2012 to fall 2011, classroom use on Friday afternoons increased 1%. The following bullets compare the percentage of classrooms in use on Friday afternoons by instructional period;

- 1% decrease in classroom use from 12:30 p.m. to 1:45 p.m.
- 1% increase from 2:00 p.m. to 3:20 p.m.
- 1% increase from 3:30 p.m. to 4:50 p.m.

Evening/Night Classroom Use

On average, 82 of 189 classrooms (44%) were in use Monday-Thursday from 5:00 p.m. to 9:20 p.m. The Friday evening average was 4%. When comparing fall 2012 to fall 2011, classroom use in Monday-Thursday evening/night decreased 2%. The following bullets compare the percentage of classrooms in use Monday-Thursday evening/night;

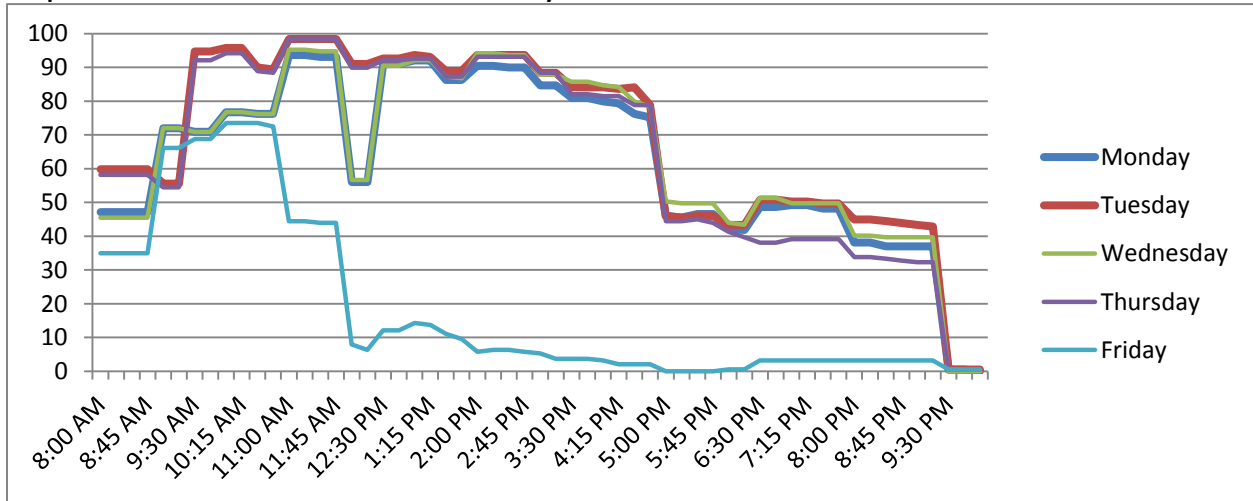
- 6% decrease on Monday
- 2% decrease on Tuesday
- Less than 1% decrease on Wednesday
- Less than 1% decrease on Thursday
- 1% increase on Friday

When comparing fall 2012 to fall 2011, it may appear that fewer classrooms were in use during several instructional periods throughout the week. However, because there were 8 more classrooms on record in fall 2012 than in fall 2011, a percentage decrease in usage does not necessarily indicate that the actual number (or count) of classrooms in use was lower in 2012.

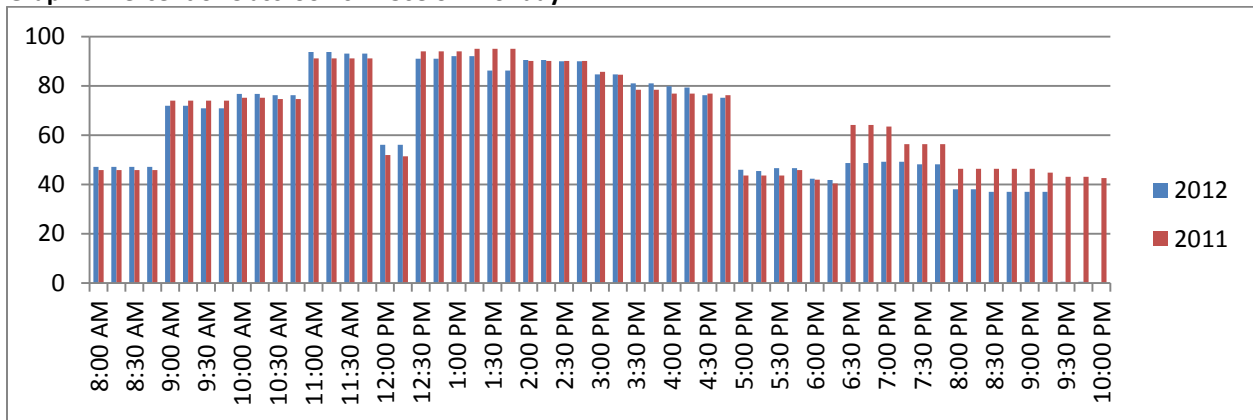
Table 12: Percent of Classrooms in Use by Day and Hour (Fall 2012)

Time	M%	T%	W%	TH%	F%
8:00 AM	47.09	59.79	45.50	58.20	34.92
8:15 AM	47.09	59.79	45.50	58.20	34.92
8:30 AM	47.09	59.79	45.50	58.20	34.92
8:45 AM	47.09	59.79	45.50	58.20	34.92
9:00 AM	71.96	55.56	71.96	54.50	66.14
9:15 AM	71.96	55.56	71.96	54.50	66.14
9:30 AM	70.90	94.71	70.90	92.06	68.78
9:45 AM	70.90	94.71	70.90	92.06	68.78
10:00 AM	76.72	95.77	76.72	94.18	73.54
10:15 AM	76.72	95.77	76.72	94.18	73.54
10:30 AM	76.19	89.95	76.19	88.89	73.54
10:45 AM	76.19	89.42	76.19	88.36	72.49
11:00 AM	93.65	98.41	95.24	98.41	44.44
11:15 AM	93.65	98.41	95.24	98.41	44.44
11:30 AM	93.12	98.41	94.71	98.41	43.92
11:45 AM	93.12	98.41	94.71	98.41	43.92
12:00 PM	56.08	91.01	56.61	89.95	7.94
12:15 PM	56.08	91.01	56.61	89.95	6.35
12:30 PM	91.01	92.59	90.48	92.06	12.17
12:45 PM	91.01	92.59	90.48	92.06	12.17
1:00 PM	92.06	93.65	92.06	92.59	14.29
1:15 PM	92.06	93.12	92.06	92.59	13.76
1:30 PM	86.24	88.89	87.30	87.30	11.11
1:45 PM	86.24	88.89	86.77	87.30	9.52
2:00 PM	90.48	93.65	94.18	93.12	5.82
2:15 PM	90.48	93.65	94.18	93.12	6.35
2:30 PM	89.95	93.65	93.65	93.12	6.35
2:45 PM	89.95	93.65	93.65	93.12	5.82
3:00 PM	84.66	88.36	87.83	88.36	5.29
3:15 PM	84.66	88.36	87.83	88.36	3.70
3:30 PM	80.95	84.13	85.71	82.01	3.70
3:45 PM	80.95	84.13	85.71	82.01	3.70
4:00 PM	79.89	84.13	84.66	81.48	3.17
4:15 PM	79.37	83.60	84.13	81.48	2.12
4:30 PM	76.19	84.13	79.89	78.84	2.12
4:45 PM	75.13	78.84	78.31	78.84	2.12
5:00 PM	46.03	46.03	50.26	44.44	0.00
5:15 PM	45.50	45.50	49.74	44.44	0.00
5:30 PM	46.56	46.03	49.74	44.97	0.00
5:45 PM	46.56	46.03	49.74	43.92	0.00
6:00 PM	42.33	43.39	43.92	41.27	0.53
6:15 PM	41.80	43.39	43.39	39.68	0.53
6:30 PM	48.68	50.79	51.32	38.10	3.17
6:45 PM	48.68	50.79	51.32	38.10	3.17
7:00 PM	49.21	50.26	49.74	39.15	3.17
7:15 PM	49.21	50.26	49.74	39.15	3.17
7:30 PM	48.15	49.74	49.74	39.15	3.17
7:45 PM	48.15	49.74	49.74	39.15	3.17
8:00 PM	38.10	44.97	40.21	33.86	3.17
8:15 PM	38.10	44.97	40.21	33.86	3.17
8:30 PM	37.04	44.44	39.68	33.33	3.17
8:45 PM	37.04	43.92	39.68	32.80	3.17
9:00 PM	37.04	43.39	39.68	32.28	3.17
9:15 PM	37.04	42.86	39.68	32.28	3.17
9:30 PM	0.53	0.53	0.00	0.53	0.53
9:45 PM	0.53	0.53	0.00	0.53	0.53
10:00 PM	0.00	0.53	0.00	0.53	0.53
< 20%	20-39.9%	40-59.9%	60-79.9%	>=80	

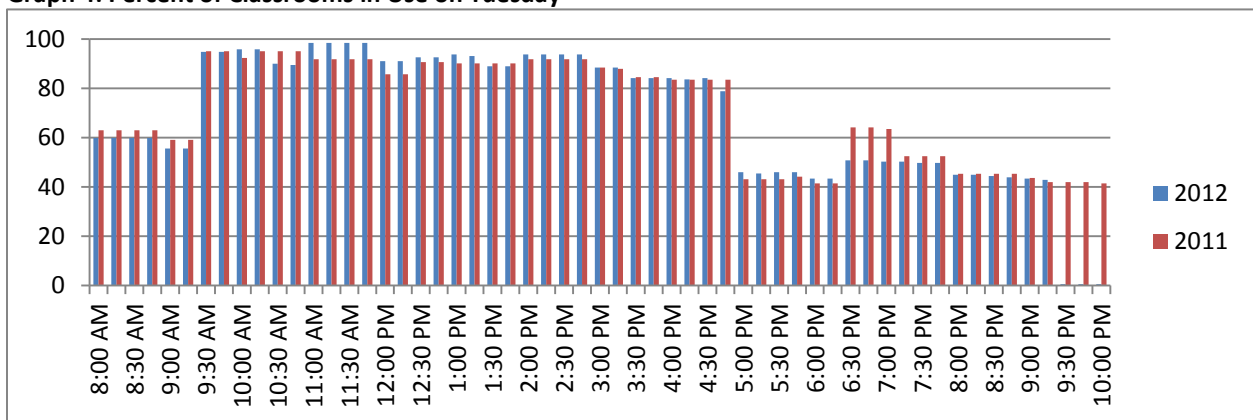
Graph 2: Percent of Classrooms in Use for All Days of the Week



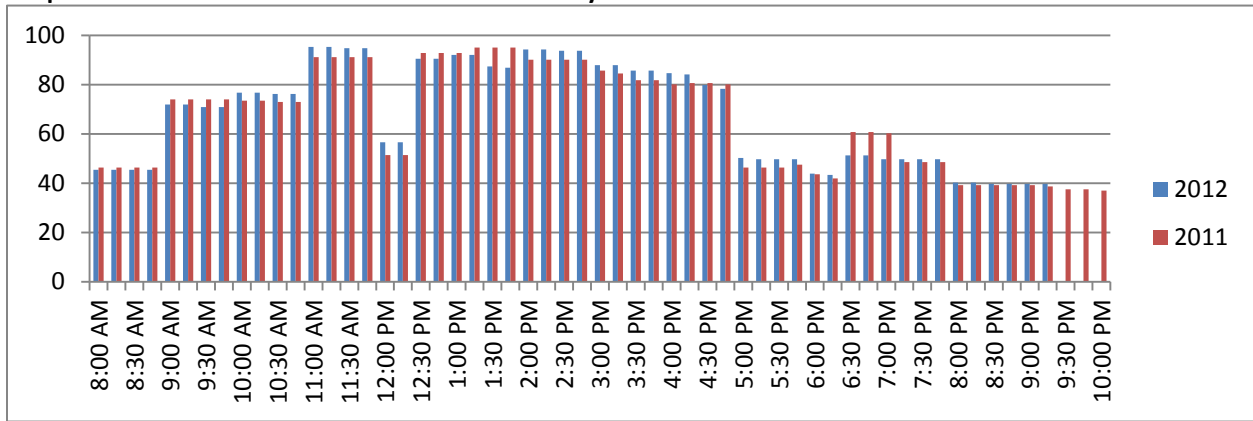
Graph 3: Percent of Classrooms in Use on Monday



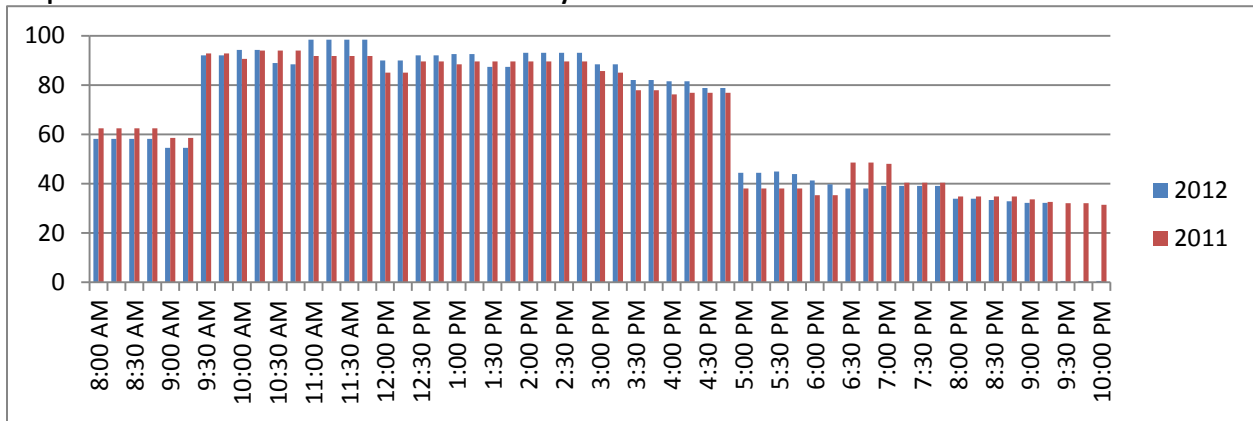
Graph 4: Percent of Classrooms in Use on Tuesday



Graph 5: Percent of Classrooms in Use on Wednesday



Graph 6: Percent of Classrooms in Use on Thursday



Graph 7: Percent of Classrooms in Use on Friday

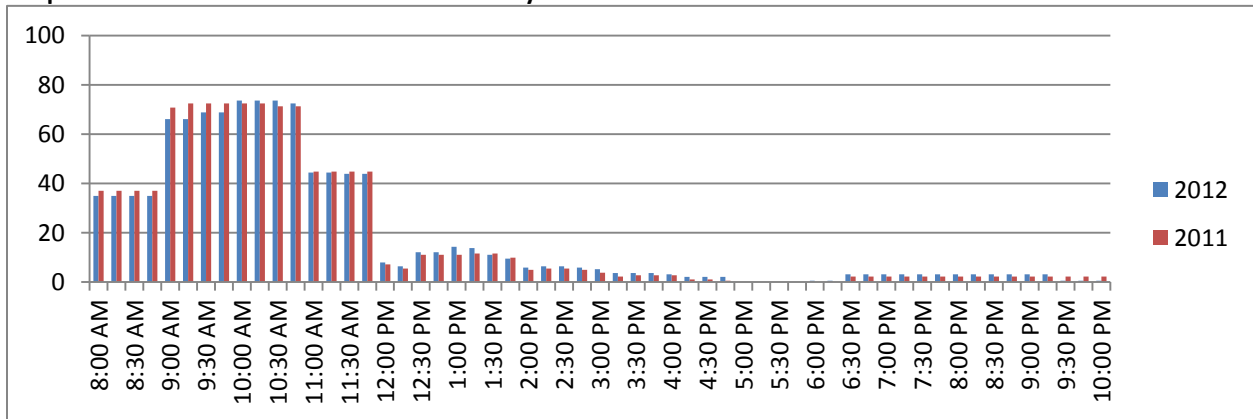


Table 13 shows percent of course sections taught on Friday and at or before 8:00 am by department.

Friday classes:

- In total, 720 of 4726 (15%) course sections convene on Fridays.
- Five (5) academic departments each taught 40 or more sections on Friday: Music, Math, English, Philosophy and Biology
- Materials Science and Music taught 40% plus of their sections on Fridays
- Four (4) academic departments did not teach on Fridays: Aerospace Studies, General Studies, International Studies and Military Science.

Classes taught at or before 8:00 a.m.:

- In total, 417 of 4726 (9%) sections convene at or before 8:00 a.m.
- Biology and Health and Human Performance taught 40 or more sections at 8:00 a.m.
- No academic departments taught over 40% of their classes starting at 8:00 a.m.
- Ten (10) academic departments did not teach classes starting at 8:00 am; Anthropology; CLAS; General Studies; International Studies; Materials Science, Military Science; Occupational Education; Respiratory Care; Social Work; and Sociology

Table 13: Percent of Course Sections on Fridays and At or Before 8:00 am

College	Sections	Friday Sections	Friday %	8:00 AM Sections	8:00 AM %
Applied Arts					
Aerospace Studies	7	0	0	1	14
Agriculture	50	9	18	5	10
Criminal Justice	87	16	18	9	10
Family and Consumer Sciences	116	6	5	15	13
Military Science	5	0	0	0	0
Occupational Education	20	2	10	0	0
Social Work	46	1	2	0	0
	331	34	10	30	9
Business					
Accounting	62	16	26	1	2
Computer Information Systems	47	7	15	3	6
Finance and Economics	84	10	12	7	8
Management	76	3	4	2	3
Marketing	48	3	6	3	6
McCoy College	6	0	0	0	0
	323	39	12	16	5
Education					
CLAS	77	1	1	0	0
Curriculum & Instruction	150		0	11	7
Education	13	1	8		0
HHP	261	24	9	41	16

College	Sections	Friday Sections	Friday %	8:00 AM Sections	8:00 AM %
	501	26	5	52	10
Fine Arts					
Art & Design	229	15	7	37	16
Communications	142	23	16	6	4
Mass Communications	97	4	4	4	4
Music	274	120	44	24	9
Theatre	131	21	16	3	2
	873	183	21	74	8
Health Professions					
Clinical Laboratory Science	19	3	16	4	21
Communication Disorders	28	8	29	4	14
Health Information Management	22	3	14	2	9
Healthcare Administration	49	8	16	2	4
Nursing	11	1	9		0
Physical Therapy	45	8	18	7	16
Radiation Therapy	11	2	18	2	18
Respiratory Care	8	2	25	0	0
Total	193	35	18	21	11
Honors					
	20	0	0	0	0
Liberal Arts					
Anthropology	56	8	14	0	0
English	306	50	16	22	7
Geography	172	16	9	8	5
History	89	8	9	1	1
International Studies	1	0	0	0	0
Modern Languages	145	37	26	12	8
Philosophy	129	48	37	8	6
Political Science	108	17	16	5	5
Psychology	88	13	15	7	8
Sociology	66	11	17	0	0
Women's Studies	2	0	0	0	0
Total	1162	208	18	63	5
Science					
Biology	351	44	13	48	14
Chemistry	140	34	24	23	16
Computer Science	107	15	14	8	7
Engineering	62	3	5	1	2
Engineering Technology	71	4	6	8	11

College	Sections	Friday Sections	Friday %	8:00 AM Sections	8:00 AM %
Mathematics	259	62	24	28	11
MSEC	5	4	80	0	0
Physics	92	12	13	13	14
Total	1087	178	16	129	12
University					
General Studies	4	0	0	0	0
University Seminar	232	17	7	32	14
Total	236	17	7	32	14
University Total					
University Total	4726	720	15	417	9

CLASS LAB UTILIZATION AND AVERAGE PERCENT FILL

A class laboratory is defined as a room for “regularly scheduled classes that require special equipment for student participation, experimentation, observation, or practice.” It is designed for and/or furnished with equipment to serve the needs of a particular discipline for group instruction. The room design and/or equipment normally limits its use for other disciplines.

In fall 2011 there were 72 class labs on inventory. The following space use changes were made for fall 2012. The net result is 101 class labs.

- Class labs removed from the inventory of Class Labs
 - College of Education 1025 was remodeled to clinic space
 - Evans Liberal Arts 122 was reclassified to a special class lab
 - Evans Liberal Arts 225 was remodeled to a classroom
 - Family and Consumer Sciences 203 was reclassified to a special class lab
 - Fire Station Studio 100 was reclassified to an office
 - Joann Cole Mitte 3107 was reclassified to a class lab service room
 - Music 122, 124, 125 were reclassified to classrooms
 - Roy F. Mitte 1239 was reclassified to a special class lab
- Rooms added to the inventory of Class Labs
 - Chemistry 327 was reclassified from a special class lab
 - Derrick Hall 122 was reclassified from a classroom
 - Evans Liberal Arts 149 was reclassified from a special class lab
 - Family and Consumer Sciences 187 was reclassified from a special class lab
 - Flowers Hall 114, 120, G13 were reclassified from special class labs
 - Health Professions 104 was formerly classified as an exam room
 - Health Professions 218 was formerly classified as a classroom
 - Health Professions 305, 333, 334, 335, 346 were formerly classified as special class labs
 - Joann Cole Mitte 1128, 1113-A were formerly classified as classrooms
 - Joann Cole Mitte 3118 was formerly classified as a special class lab
 - McCoy Hall 332, 334 were formerly classified as a special class labs
 - Old Main 238 was formerly classified as a classroom
 - Old Main 324 was formerly classified as special class labs

- Roy F. Mitte 3223, 4231, 4236, 5233 were formerly classified as special class labs
- Sabinal 112, 117 were formerly classified as special class labs
- Supple Science 133, 137,139, 176-A, 222-A, 239, 326, 372, 424-A were formerly classified as special class labs
- Theatre Center 209 was formerly classified as a special class lab
- Theatre Center 216 was formerly classified as assembly
- Undergraduate Academic Center 342 opened fall 2012

Table 14 provides the number of sections (SECT), weekly hours (HRS), utilization rate (UTIL), seating capacity (SEATS), Average Percent Fill (PF) and responsible department/ school for each designated class lab listed in the facilities inventory for fall 2012. A summary by college (Table 14A) follows.

Table 14: Class Lab Utilization Rates and Average Percent Fill by Building and Room

BUILDING	ROOM	SECT	HRS	UTIL%	SEATS	PF	DEPT
Agriculture	00101	11	27.8	111.2	30	69	Agriculture
Chemistry	00106	11	37.4	149.6	19	97	Chem/Biochemistry
Chemistry	00110	14	47.6	190.4	18	110	Chem/Biochemistry
Chemistry	00113	12	40.8	163.2	24	98	Chem/Biochemistry
Chemistry	00114	14	47.6	190.4	24	99	Chem/Biochemistry
Chemistry	00117	10	34	136	24	99	Chem/Biochemistry
Chemistry	00222	2	19.2	76.8	12	83	Chem/Biochemistry
Chemistry	00229	11	37.4	149.6	14	104	Chem/Biochemistry
Chemistry	00232	9	30.6	122.4	15	84	Chem/Biochemistry
Chemistry	00327	3	20.4	81.6	24	79	Chem/Biochemistry
Derrick Hall	00122	15	47.2	188.8	48	82	Mathematics
Derrick Hall	00236	19	28.6	114.4	20	70	Computer Science
Derrick Hall	00325	19	41.8	167.2	24	74	Computer Science
Derrick Hall	00338	10	31.8	127.2	38	81	Mathematics
Derrick Hall	00339	7	22.4	89.6	40	76	Mathematics
Emmett & Miriam McCoy Hall	00332	8	25.6	102.4	48	61	CIS & Quant Methods
Emmett & Miriam McCoy Hall	00334	13	41.2	164.8	64	85	CIS & Quant Methods
Evans Liberal Arts	00123	9	28.8	115.2	24	93	Geography
Evans Liberal Arts	00149	15	28.6	114.4	20	83	Geography
Evans Liberal Arts	00155	28	30.6	122.4	24	77	Geography
Evans Liberal Arts	00156	15	43.4	173.6	20	95	Geography
Evans Liberal Arts	00226	13	20.8	83.2	41	69	Anthropology
Family & Consumer Sciences	00132	6	28.2	112.8	20	82	Family/Consumer Sci
Family & Consumer Sciences	00141	7	23.8	95.2	35	69	Family/Consumer Sci
Family & Consumer Sciences	00187	9	19.8	79.2	24	82	Family/Consumer Sci
Family & Consumer Sciences	00205	9	36.2	144.8	20	84	Family/Consumer Sci
Family & Consumer Sciences	00216	5	32	128	20	60	Family/Consumer Sci
Flowers Hall	00114	12	38.8	155.2	25	94	English
Flowers Hall	00120	8	22.8	91.2	20	108	English
Flowers Hall	G13	8	25.2	100.8	28	82	English
Health Professions	00104	4	21.6	86.4	20	63	Physical Therapy
Health Professions	00218	11	27	108	32	37	Coll/Health Prof
Health Professions	00305	17	36.4	145.6	42	93	Physical Therapy
Health Professions	00333	13	26.4	105.6	40	75	Physical Therapy

BUILDING	ROOM	SECT	HRS	UTIL%	SEATS	PF	DEPT
Health Professions	00334	8	32.2	128.8	19	52	Clinical Lab Science
Health Professions	00335	9	28.6	114.4	24	110	Physical Therapy
Health Professions	00346	5	20	80	18	42	Clinical Lab Science
Jerome & Catherine Supple Science	00128	13	28.6	114.4	31	76	Physics
Jerome & Catherine Supple Science	00133	12	33.6	134.4	25	61	Physics
Jerome & Catherine Supple Science	00137	6	16.8	67.2	18	95	Physics
Jerome & Catherine Supple Science	00139	8	17.6	70.4	25	72	Physics
Jerome & Catherine Supple Science	00141	12	26.4	105.6	40	87	Physics
Jerome & Catherine Supple Science	00176-A	11	20.4	81.6	35	51	Biology
Jerome & Catherine Supple Science	00222-A	10	22	88	24	97	Biology
Jerome & Catherine Supple Science	00224-A	13	34.8	139.2	24	100	Biology
Jerome & Catherine Supple Science	00233	13	44.2	176.8	24	60	Biology
Jerome & Catherine Supple Science	00239	10	34	136	24	83	Biology
Jerome & Catherine Supple Science	00255-A	20	68	272	24	95	Biology
Jerome & Catherine Supple Science	00261	27	43.2	172.8	24	96	Biology
Jerome & Catherine Supple Science	00265-A	22	35.2	140.8	24	94	Biology
Jerome & Catherine Supple Science	00270-A	16	54.4	217.6	16	100	Biology
Jerome & Catherine Supple Science	00326	7	21.8	87.2	24	80	Biology
Jerome & Catherine Supple Science	00363	14	47.6	190.4	16	98	Biology
Jerome & Catherine Supple Science	00369-A	14	47.6	190.4	18	87	Biology
Jerome & Catherine Supple Science	00372-A	7	23.8	95.2	25	78	Biology
Jerome & Catherine Supple Science	00422-A	26	88.4	353.6	18	100	Biology
Jerome & Catherine Supple Science	00424-A	7	23.8	95.2	20	69	Biology
Jerome & Catherine Supple Science	00429-A	16	54.4	217.6	20	101	Biology
Jerome & Catherine Supple Science	00433	26	88.4	353.6	18	103	Biology
Joann Cole Mitte	01113-A	10	46.8	187.2	28	72	School Art & Design
Joann Cole Mitte	01128	8	54.4	217.6	25	80	School Art & Design
Joann Cole Mitte	01129	9	57.2	228.8	22	81	School Art & Design
Joann Cole Mitte	01130	9	47.6	190.4	24	84	School Art & Design
Joann Cole Mitte	02115	10	64	256	20	101	School Art & Design
Joann Cole Mitte	02120	17	68.8	275.2	22	86	School Art & Design
Joann Cole Mitte	02131	8	54.4	217.6	25	75	School Art & Design
Joann Cole Mitte	03102-C	8	51.8	207.2	19	74	School Art & Design
Joann Cole Mitte	03107-A	10	55.6	222.4	20	90	School Art & Design
Joann Cole Mitte	03107-F	7	47.6	190.4	20	99	School Art & Design
Joann Cole Mitte	03118	6	40.8	163.2	22	83	School Art & Design
Joann Cole Mitte	04105	15	64	256	20	103	School Art & Design
Joann Cole Mitte	04107	4	27.2	108.8	18	101	School Art & Design
Joann Cole Mitte	04112	7	34	136	20	101	School Art & Design
Jowers Center	B175	15	39.6	158.4	35	66	Theatre
Jowers Center	B178	12	39.8	159.2	26	65	Theatre
Jowers Center	D112	12	26	104	20	82	Health/Human Perf
Music	00121	13	34.8	139.2	15	80	Music
Music	00216	15	38	152	59	30	Music
Music	00221	11	28.4	113.6	20	103	Music
Music	00222	21	32	128	54	51	Music
Music	00224	22	55.4	221.6	150	41	Music

BUILDING	ROOM	SECT	HRS	UTIL%	SEATS	PF	DEPT
Old Main	00212	7	23.6	94.4	19	81	Sch. of Journalism
Old Main	00238	14	48.6	194.4	20	79	Sch. of Journalism
Old Main	00324	4	20.8	83.2	11	75	Sch. of Journalism
Roy F. Mitte	03223	10	28.2	112.8	23	48	Physics
Roy F. Mitte	04231	13	29.2	116.8	53	47	Engineering Technol
Roy F. Mitte	04234	11	29.8	119.2	40	48	Engineering Technol
Roy F. Mitte	04236	9	19.4	77.6	24	99	Engineering Technol
Roy F. Mitte	05213	10	30.6	122.4	24	84	Engineering
Roy F. Mitte	05216	10	29.6	118.4	24	62	Engineering
Roy F. Mitte	05233	10	24.8	99.2	40	50	Engineering
Roy F. Mitte	05246	10	33.2	132.8	24	60	Engineering
Sabinal	00112	8	40.8	163.2	23	65	School Art & Design
Sabinal	00117	4	27.2	108.8	24	78	School Art & Design
Theatre Center	00106	11	35.6	142.4	24	68	Theatre
Theatre Center	00113	11	35.2	140.8	29	73	Theatre
Theatre Center	00206	14	42.8	171.2	110	60	Theatre
Theatre Center	00209	12	36.2	144.8	100	30	Theatre
Theatre Center	00216	10	32	128	20	76	Theatre
Trinity	00113	15	48.6	194.4	18	90	Sch. of Journalism
Undergraduate Academic Center	00342	9	28.8	115.2	32	72	Political Science

Table 8 Summary:

- 81 of 101 of class labs (70.9%) were scheduled with 25.0 or more hours per week of instruction. The Average Percent Fill (PF) for these 81 class labs is 80%;
- 10 of 101 class labs (9.9%) were scheduled with 21.0 to 24.9 hours per week of instruction. The average PF for these 10 rooms is 77%;
- 8 of 101 class labs (7.9%) were scheduled with 18.0 to 20.9 hours per week of instruction. The average PF for these 8 rooms 73%;
- 2 of 101 (1.9%) had less than 18 hours per week of instruction. The average PF for these 2 rooms is 84%.

Table 14A: Class Lab Utilization by College

COLLEGE	CLASS LABS	SECTIONS	HOURS	AVERAGE HOURS	UTIL%	PF
Applied Arts	6	47	167.8	28.0	112	74
Business	2	21	66.8	33.4	134	73
Fine Arts	32	347	1373.6	42.9	172	76
Health Professions	8	79	218.2	27.3	109	69
Liberal Arts	9	117	267.8	29.8	119	86
Science	44	549	1586.6	36.1	144	82

USE OF ROOMS NOT CODED AS CLASSROOMS AND CLASS LABS

There were 2205 hours taught (743 sections) in rooms not designated as classrooms or class laboratories for fall 2012. These course sections are not included in utilization or Average Percent Fill calculations but are included in the Facilities Demand calculation.

Table 15: Utilization of Rooms Not Coded as Classrooms and Class Labs

SPACE USE	2012 ROOM COUNT	2012 SECTIONS	2012 HOURS	2011 ROOM COUNT	2011 SECTIONS	2011 HOURS
Special Class Open Laboratory	52	217	597	72	431	1626.9
Individual Study Laboratory	1	1	2.4	4	8	22
Research/Non-Class Laboratory	1	1	3.6	2	3	11.6
Office	26	113	93.6	22	106	247.6
Conference Room	15	56	145.8	11	31	110
Reading/Study Room	3	20	40.2	1	12	12
Athletic / PE	8	109	213.2	9	105	226.2
Athletic / PE Service	2	6	14	2	6	14
Media Production	2	5	19	7	35	144.8
Assembly	6	33	101.8	6	39	131.4
Meeting Room	37	180	527.3	47	190	694.2
Shop	1	2	6.8	1	2	6.8

When comparing fall 2011 to fall 2012, the number of rooms used for scheduled instruction that are not classified as a classroom or class lab decrease by 30, the number of course sections offered in those rooms decreased by 225 and the hours of non-stacked instruction taught in those rooms decreased by 1482.

APPENDIX

The CBM005-Building and Room Report and the CBM011-Facilities Room Inventory Report provide the data used to compute Texas State's Space Usage Efficiency (SUE) score. Both of these reports are certified annually by the Coordinating Board.

The Registrar's Office, working with Institutional Research, submits and certifies the CBM005– Building and Room Report every fall semester. Shortly after the twelfth class day of the fall semester, the Coordinator of Facilities Inventory requests a copy of the CBM005 to conduct an analysis of all rooms listed in the report. The purpose is to identify possible "space use" changes in order to maximize the instructional hours included in the calculations by the Coordinating Board.

Comparing "space use" (classroom, class lab, special class lab, meeting room etc.) to "hours of scheduled instruction" can help determine the best space use classification for a room. For example, if a room is identified as a "special class lab" and there are 12.5 or more hours of instruction scheduled in that room, it is "flagged" for a possible change to a "class lab" to be included in the utilization calculations for class labs (12.5 hours of instruction is $\frac{1}{2}$ of the Coordinating Board benchmark for class lab utilization). Conversely, if a room is classified as a "class lab" and less than 12.5 hours of scheduled instruction are offered in that room, it may be better to classify the room as a "special class lab." In these situations, historical class data is analyzed and/or the department controlling the room is contacted to determine the best space use code before any changes are made. The following paragraphs provide the calculations used by the Coordinating Board for determining Texas State's SUE score.

Facilities Demand Score Calculations - In fall 2012, a total of 14,767 instructional hours were scheduled weekly at Texas State. Instructional hours are calculated by multiplying the number of times a course meets in one week by the duration of the course period, then dividing this number by 50 (number of minutes in an hour accounting for passing and room transition time) and adding the totals for all course sections (both lecture and lab). For example: ENG 1310, meets on MWF for 50 minutes each day resulting in 3.0 instructional hours (50×3)/50 = 3.0.

To calculate Classroom Facilities Demand, lab hours (4858) are deducted from the total hours (14,767) and the remaining hours (9909) are divided by the number of classrooms on record (214). Therefore, Classroom Facilities Demand equals 46.30 hours per week. Texas State earned the maximum number of points (4) in this category. Facilities Demand is assigned a weight of 9 by the Coordinating Board which then results in Texas State's score for Classroom Facilities Demand at 36. Class Laboratory Demand equals 48.09 hours per week (4858/101) resulting in Texas State earning the maximum number points (4) in this category. The weight assigned by the Coordinating Board to this measurement is also 9. Texas State's score for Class Laboratory Facilities Demand is 36.

Utilization Score Calculations - The average weekly hours of instruction for classrooms at Texas State for fall 2012 are 38.13 hours (100% of the classroom utilization benchmark) or 8160.4 hours / 214 classrooms. The average weekly hours of instruction for class labs at Texas State for fall 2012 are 36.44 hours (144% of the class laboratory utilization benchmark) or 3680.80 weekly hours of instruction / 101 class labs. Texas State's scores for both Classroom Utilization and Class Laboratory Utilization is 32 (the maximum points awarded). "Stack Classes" are not included in the utilization score. Stacked Classes refers to multiple courses that meet at the same time, in the same room but have different course and section numbers.

Average Percent Fill Score Calculations - The classrooms Average Percent Fill (PF) is based on an enrollment total of 232,879 students and 330,343 available student stations in 5122 course occurrences. After the individual course period percentages are calculated, rounded, multiplied by the number of occurrences, and totaled, the final ratio for classrooms is 3551.12 / 5122 or 69.33%. For class labs the calculation is based on 39,785 students and 58,223 available seats in 1733 course occurrences. After all the calculations are complete, the final ratio is 1341.61 / 1733 or 77.41%. Texas State's scores for both Classroom and Class Laboratory Average Percent Fill is 32 (the maximum points awarded).