

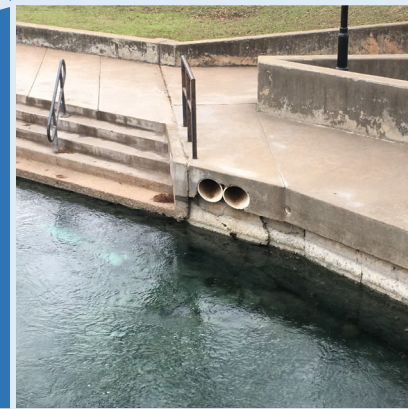
Only Rain Down the Drain!



Stormwater runoff is rainwater that flows along paved surfaces, such as Bobcat Trail, instead of soaking into the ground.



Stormwater runoff picks up any pollutants that have been left behind, such as litter, before entering a storm drain.



The stormwater runoff then flows through underground piping before being discharged into the river.

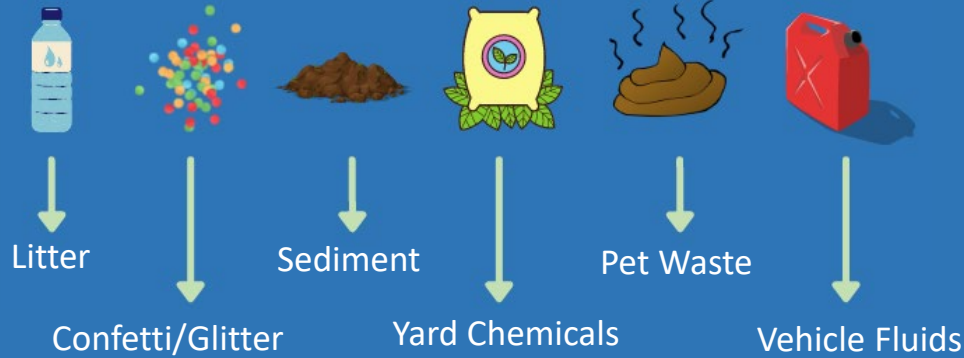


The stormwater runoff along with any pollutants it picked up enters the river completely untreated and unfiltered.



Find Sally the Salamander around campus! Sally marks the storm drains to remind us that stormwater drains to the river.

Common Stormwater Pollutants



Impacts of Polluted Stormwater



Wildlife

Wildlife can mistake pollutants, such as litter, for food. Other pollutants can make the water unlivable for wildlife.



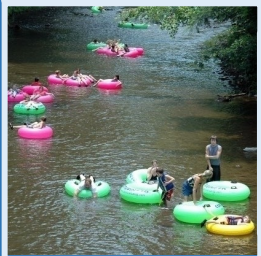
Habitat

Pollutants can destroy habitats by covering them with litter and other debris, or by introducing toxins.



Drinking Water

Pollutants make it harder to treat surface water and groundwater to produce drinking water.



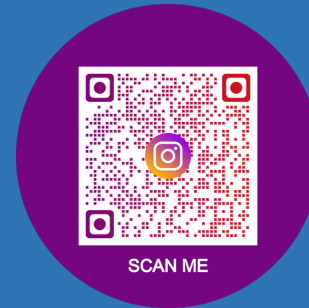
Recreation

Pollutants can make water bodies unsafe for recreational activities, such as swimming.

How Can I Help?



Scan the QR codes below to follow us on Instagram or to visit the TXST stormwater website!



Participate in upcoming events:

- Great Texas River Clean Up – 1st weekend of March
- Storm Drain Inlet Marking – April
- Fall River Clean Up – 1st weekend of October

Take action to prevent pollution:

- Never litter
- Never release aquatic pets/plants into the river
- Avoid tossing glitter/confetti for photos
- Pick up after your pet
- Maintain your vehicle regularly to prevent leaks



Call the IDDE Hotline to report illegal dumping or if you notice a suspicious discharge flowing into our campus drainage ways!



512-245-IDDE
(4333)