



Round Rock Orientation for CDIS Majors



CDIS QR SCAN ME

CDIS website

<https://www.health.txstate.edu/cdis/>



▸ Application Process

- Number admitted
- Notification of acceptance
 - June/July
- Registration for the fall
 - DAR
- Assigned a permanent advisor in the fall

➤ Undergraduate Course Sequence and Degree Requirements

- Support Courses
 - Specific required courses
 - Support electives
- Equivalency guide
- CHP Advising Center: Encino Hall 201

512-245-3506; hpadvising@txstate.edu

Communication Disorders (CDIS) Recommended Undergraduate Course Sequence

Texas State University
Minimum 120 Hours

Fall Semester Freshman

* CDIS 1331
English 1310
Math 1315-College Algebra
History 1310
University Seminar 1100
Psychology 1300

16 hours

Spring Semester Freshman

English 1320
Biology 1330 and 1130
History 1320
Philosophy 1305 or 1320
Communication Studies 1310

16 hours

Fall Semester Sophomore

ENG Literature (see catalog)
Political Science 2310
HIM 2360-Medical Terminology
Biology 2430-Anatomy and Physiology (Lab)
PSY 3300-Lifespan Dev.

16 hours

Spring Semester Sophomore

ART, DAN, MU or TH 2313
Physics 1310
Political Science 2320
HP 3302 or equiv.-Statistics
ENG 3303-Technical Writing

15 hours

Students must complete a minimum of 50 hours of the above core courses to apply. Only the following courses will be used in the GPA calculation for admission to the major sequence: **CDIS 1331; Bio 2430; PSY 3300; Phys 1310; HP 3302.** A student must have an overall GPA of 3.0 and be in "good standing" academically to apply.

***CDIS 1331 is taught every Fall, Spring and Summer I semester.**

Fall Semester Junior

CDIS 3325-A&P of the Speech Production System
CDIS 3459-Phonetics (Lab)
CDIS 3312-Neuroanatomy for Communication Disorders
Support course: see back of sheet for options

13 hours

Spring Semester Junior

CDIS 3469-Hearing Science (Lab)
CDIS 3475-Speech Science (Lab)
CDIS 4330-Speech & Language Development
Support course: see back of sheet for options

14 hours

Fall Semester Senior

CDIS 3462-Speech Sound Disorders (Lab)
CDIS 4340-Augmentative Communication Systems
CDIS 4420-Diagnostic Audiology (Lab)
CDIS 4350-Survey of Neurogenic Communication Disorders
CDIS 4344⁺-Clinical Practicum in Communication Disorders (Lab)

14 hours or 17 hours if enrolled in clinic

Spring Semester Senior

CDIS 4317-Service Delivery in Communication Disorders
CDIS 4370-Aural Rehabilitation
CDIS 4466- Language Disorders (Lab)
Support Course: see back of sheet for options
CDIS 4344⁺-Clinical Practicum in Communication Disorders (Lab)

13 hours or 16 if enrolled in clinic

General Requirements: 6-8 hours of foreign language are required if two years of the same language were not taken in high school. If the computer proficiency requirement is not met through high school coursework, the student will be required to take a computer science course.

⁺One semester of CDIS 4344 is required at the undergraduate level.

Italics indicate support courses which require no less than a "C" (see back of sheet for options).

Support Courses - pick nine hours of support courses from this list:

Some of these are available only in San Marcos and some are available only in Round Rock. ([check for availability in any given semester](#))

Communication Disorders

CDIS 4371 – Intro to Stuttering and Voice
CDIS 4335 – Bilingual Speech Sound Disorders
CDIS 4301 – Adv Independent Study (Supervising Faculty Approval Needed)
CDIS 4379 – International Multicultural Experience in CDIS
CDIS 4680 – International Multicultural Experience in CDIS

Anthropology

ANTH 3302 – Introduction to Linguistic Anthropology
ANTH 3325 – Medical Anthropology

Counseling

COUN 3320 – Intro to Counseling

English

ENG 3319 – The Development of English

Health Administration

HA 3309 – Ethics in the Health Professions

Psychology

PSY 3315 – Abnormal Psychology
PSY 3316 – Personality Psychology
PSY 3322 – Brain and Behavior
PSY 3350 – Cognitive Behavior Therapies

Sociology

SOCI 3383 – Aging and Society

Admission Process

Students are initially considered Pre-professional Communication Disorders majors. Once the student is accepted into the Junior/Senior sequence, the major becomes Communication Disorders.

Admission to the CDIS Junior/Senior-level courses is competitive and selective.

Enrollment is limited by student/faculty ratios in both academic and clinical components of

the program. To be considered for admission to the Junior/Senior-level courses, the following is required:

1. An overall GPA of 3.0
2. Completion of a minimum of 50 hours of coursework from the freshman and sophomore level courses listed on the CDIS degree plan. The 50 hours must be completed by the end of the Summer 1 session in the same calendar year in which the student wishes to begin the Junior/Senior sequence.
3. The following courses must be taken as part of the 50 hours:
 - a. PHYS 1310: Elementary Physics
 - b. CDIS 1331: Introduction to Communication Disorders
 - c. BIO 2430: Human Anatomy and Physiology
 - d. HP 3302: Biostatistics
 - e. PSY 3300: Lifespan Development

These classes must be completed by the end of the Summer 1 session in the same calendar year in which the student wishes to begin the Junior/Senior sequence.

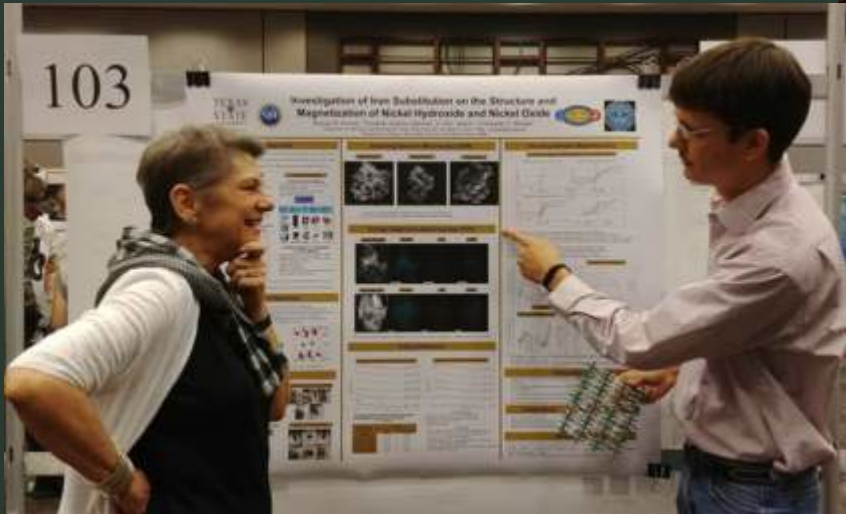
4. A minimum grade of C in support and major classes listed as part of the freshman/sophomore years on the Degree Plan (HIM 2360: Medical Terminology; BIO 2430: Human Anatomy and Physiology; HP 3302: Biostatistics; PSY 3300: Lifespan Development; CDIS 1331: Introduction to Communication Disorders).

Students are ranked by their GPA in the five required classes (CDIS 1331, HP 3302, PHYS 1310, PSY 3300 and BIO 2430) and admittance in the Junior/Senior year is based on this ranking. Preference for admission is given to students who have not repeated any of the five courses. Having the minimum GPA does not guarantee acceptance into the program. Not all students who meet the minimum GPA will be accepted.

The application for admission is submitted to the department by May 15th. Admission decisions are made after the end of Summer 1. All students will be notified by email of the CDIS Undergraduate Admission Committee's decisions. Student selection is made on academic performance and not on the basis of race, color, religion, gender, age, or national origin.

Misc Academics

- Honors' College
- Minors





Other Departmental Opportunities

- Student Service Organizations

- NSSLHA
- Sertoma
- BIG

- Student Affairs:

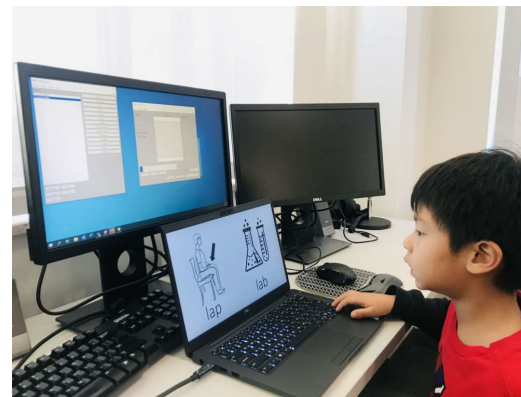
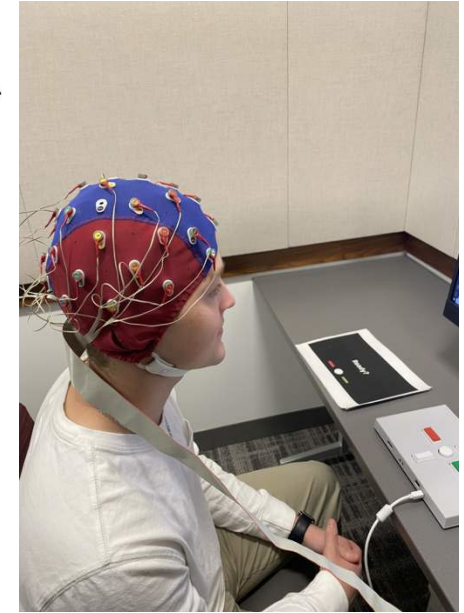
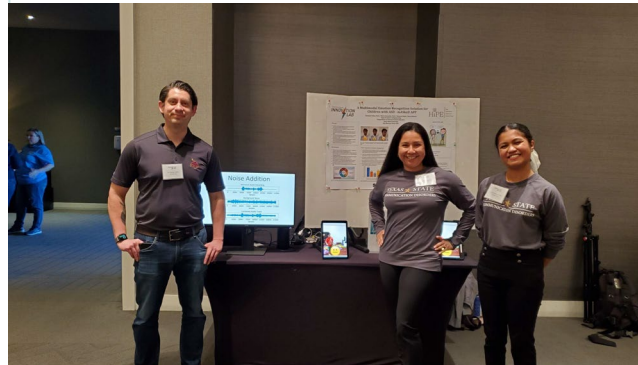
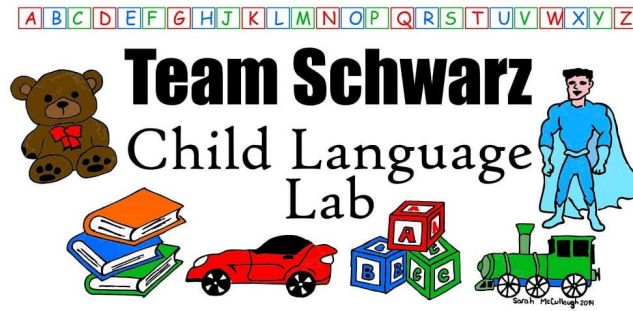
LaTonya Y. Henry

LH17@txstate.edu



Research Labs

- Faculty research labs and projects
 - Bilingual Language Acquisition Brains (BLAB) Lab
 - Child Language Lab
 - Child Speech Lab
 - NEUral Systems Research in Aging Lab (NEURAL)
 - Stuttering Research Lab
 - Team Schwarz Child Language Lab



▸ Living and Studying in Round Rock

- Moving/Housing

- Create a group (Is12@txstate.edu)

- [Round Rock Off-Campus Housing Guide](#)

- Contact: 512-245-4663; reslife@txstate.edu

- [FAQ Willow Hall in Round Rock](#)

Student Success at Round Rock

- Division of Student Success
 - Resources
 - ODS
 - Writing Center
 - Testing Center

- 4 buildings: Avery, Nursing, Willow, Campus service building
- Academic Student services
 - Health Center, counseling center, library, ODS, ITAC
- Workout facilities
- Study areas
- PARKING!

Round Rock Campus

