

TEXAS STATE
UNIVERSITY -
SAN MARCOS

DEPARTMENT
OF GEOGRAPHY



GeoNews

Volume 19

Spring 2013

Around the River's Bend

Dr. Jim Kimmel

What a tremendous honor and privilege to be part of Geography at Texas State from 1991 to 2013. Thank you all very much! I know of no perspective as stimulating and relevant as geography and no better place to be a geographer. Texas State Geography has a rare combination of intellectual rigor and applied relevance. We have a truly dedicated faculty/staff and serious students, but we have maintained a humane atmosphere. Smart is good, but smart and nice are great!

Throughout my career two themes underlay my efforts to try to help people learn. The first was that we geographers have the potential and responsibility to reconcile and integrate the two uses of *oikos* (home), the root word of both ecology and economics.

(Kimmel, continued page 14)



Photo by: Jerry Touchstone Kimmel

Inside this issue:

Greetings from the 2
Chair...

Alumni Focus 3

Faculty News 5-7

From the Graduate 8
Coordinator

Graduate Student 8-10
Activity & Awards

Undergraduates & 12-13
Student
Organizations

Upcoming Events 15

Alumni Reunion 16



★ Deep in the Heart of Geography ★
OCTOBER 5TH-7TH 2012
SAN MARCOS, TX

Texas State University-Department of Geography along with the Gilbert Grosvenor Center for Geographic Education and the Texas Alliance for Geographic Education hosted the 97th Annual meeting of the National Council for Geographic Education. The meeting took place at the Embassy Suites-San Marcos Hotel Spa and Conference Center. Hundreds of geography educators (K-12 & University) and professionals from around the world attended the meeting to exchange ideas, research, resources, and best practices in geography education. The Texas State Department of Geography was well represented at the meeting with many professors and graduate students attending, presenting, and/or leading field trips. Dr. Yongmei Lu, Dr. Ron Hagelman, and Dr. Kevin Romig were each awarded a Distinguished Teaching Award and Dr. Lawrence Estaville was awarded the Distinguished Mentor Award.



THE SCHOOL OF GEOGRAPHICAL SCIENCES, UNIVERSIDAD NACIONAL, COSTA RICA AND THE DEPARTMENT OF GEOGRAPHY-TEXAS STATE UNIVERSITY.

After a period of study to establish formal academic relationships, Dr. Osvaldo Muniz-Solari obtained a Memorandum of Understanding between the School of Geographical Sciences, *Universidad Nacional (UNA)*, *Costa Rica* and our Department of Geography in November 2012.

The MOU will facilitate academic and student exchange as well as research activities between both academic units. Dr. Muniz-Solari was invited by the School of Geographical Sciences to formalize the MOU in San Jose, where UNA has its main campus. He guided a workshop to promote the Center for Global Geography Education (AAG-CGGE), delivered a colloquium presentation on professional development to future geographers, and had official meetings with UNA authorities and the faculty.

(Costa Rica, continued on page 14)

Greetings from the Chair...

Dr. Philip Suckling, Professor and Chair



This represents my last Newsletter “greetings from the Chair”, given that I am stepping down as Chair of the Department of Geography at the end of August, after 8 years at the helm and 22 years as a department chair overall during my career. This is also my 36th year as a university faculty member and I look forward to returning to a regular Professor’s role next academic year. For the first time in the Department’s history, an internally-appointed Chair will assume the departmental leadership position when Dr. Alberto Giordano becomes Chair. In addition, Dr. Ron Hagelman will become Associate Chair, a newly created administrative position within the department.

In my role as Chair, I am pleased to report several administrative accomplishments during the past 12 months. Despite the official University position that there was no funding for new positions, permanent funding (rather than depending on salary savings) was acquired for a second full-time Senior Lecturer in geology and for the full-time geology laboratory coordinator/instructor position. An additional \$148,000 was committed by the Provost in order to raise the stipend for all 32 of our PhD assistantship lines effective beginning with the academic year 2013-14. This should make us more competitive when trying to recruit high-quality new doctoral students into our programs.

Last fall, we welcomed Dr. Injeong Jo (PhD 2011, Texas A&M University) as a new Assistant Professor with specialization in geographic education. Recently, we successfully completed additional searches for new faculty members who will join us next August. These new colleagues will be: Dr. Kimberly Meitzen (PhD 2011, University of South Carolina), Assistant Professor with specialization in fluvial geomorphology and biogeography; Dr. Jason Julian (PhD 2007, University of North Carolina-Chapel Hill), Associate Professor with specialization in water resources; and Dr. Colleen Hiner (PhD 2012, University of California-Davis), Assistant Professor with specialization in environmental management, urban sustainability and cultural ecology. We indeed look forward to having these three new colleagues join the department.

Congratulations to Dr. Alberto Giordano who was promoted to full Professor last fall. Promotion to Associate Professor with tenure was also granted to Dr. Ron Hagelman and Dr. Kevin Romig. For fall 2013, Drs. Richard Dixon and Yongmei Lu are being promoted to full Professor and Dr. Edwin Chow is being promoted to Associate Professor with tenure. During the current academic year, Associate Professor Nate Currit has been on professional development leave (PDL), while Professor Denise Blanchard-Boehm is on PDL for the Spring 2013 semester. During the next academic year, Professor Brock Brown and I will both be on PDL for the Fall 2013 semester.

I wish to express my personal congratulations to the many colleagues and students who received awards and garnered other significant accomplishments during the past year, as outlined in this Newsletter. I am especially gratified that, after a weak academic job market last year, several of our recent PhD graduates (or soon to be graduates) have landed good positions for the next academic year.

I wish to thank those many faculty colleagues who have made serving as Chair an enjoyable and rewarding experience. I wish to particularly thank my faculty administrative team, Assistant to the Chair Mark Carter, Undergraduate Coordinator Rich Earl and Graduate Coordinator Dave Butler, for their support, dedication and collegiality. And lastly, I wish to extend a big thank you to our dedicated staff members who work tirelessly on behalf of our faculty and students. In conclusion, it has indeed been an honor to serve as Chair of the Department of Geography at Texas State-San Marcos for the past 8 years!

Alumni Focus

Layne Duesterhaus (Spring 2012) accepted a job at the Capitol Area Council of Governments as their Regional Environmental Coordinator.

Jon Kedrowski (PhD 2010) was featured in a story on CNN after reaching the summit of Mt Everest on 26 May, 2012. Jon is now an Assistant Professor at Central Washington University.

http://news.blogs.cnn.com/2012/05/25/climbing-geographer-nears-mount-everest-summit/?hpt=hp_t2

Dr. Xuelian (Shelley) Meng (PhD 2010) accepted a tenure-track assistant professor position in the Department of Geography & Anthropology at Louisiana State University.

Dr. Todd Moore (PhD, 2013) has accepted the position of Assistant Professor of Geography at Towson University in Maryland.

Jackie Philips (Spring 2012) was hired by Universities Space Research Association as a Remote Sensing Analyst in the Earth Sciences Division of NASA's Goddard Space Flight Center.

Melanie Stine (PhD, 2013) has accepted the position of Assistant Professor of geography at the University of Texas at San Antonio.

Chris Townsend (BA 1997 and MAG 2007) was promoted to Vice President of Construction for Buffington Homes, based in Austin. Both he and the president of the company (James Dorney) are graduates from the Department of Geography Masters Program.

Dr. Clayton Whitesides (PhD, 2012) has accepted the position of Assistant Professor of geography at Coastal Carolina University in Conway, South Carolina (near Myrtle Beach). Clayton has been employed by us as a full-time Lecturer for the 2012-13 academic year.



Dr. Muniz-Solari guiding the workshop in India.



Participants visiting the 2011 earthquake and tsunami disaster zone in Ishinomaki.

CENTER FOR GLOBAL GEOGRAPHY EDUCATION - CGGE

Dr. Osvaldo Muniz-Solari coordinated and guided three international workshops with Dr. Michael Solem (AAG) and Dr. Phil Klein (University of Northern Colorado); directors of the CGGE Project (National Science Foundation).

As effective projections of this NSF Project, two international workshops were developed in 2012. The first workshop was organized in **Bangalore, India**. The AAG, the Indian Institute of Geographical Studies, and the International Network for Learning and Teaching Geography in Higher Education presented this workshop in March. The second workshop was in **Tokyo, Japan** in September. It was presented by the AAG, the Association of Japanese Geographers, and the University of Tokyo.

Both workshops were attended by American professors and high school teachers along with local faculty and teachers from India and Japan, respectively. Each workshop integrated approximately 20 participants during one-week intensive work to create new Case Studies to be published in the AAG-CGGE website for further international collaboration.



High School students with typical regional dresses.

Butler, Grad Students, Instructors Attend Field Conference, Present Posters



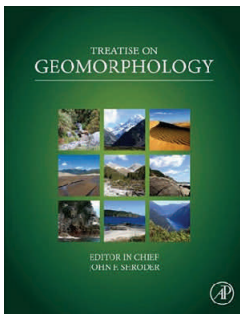
Dr. Butler in front of the Snake River and the Grand Tetons in the background. Smoke from forest fires in Idaho caused hazy skies over the course of the conference weekend.



Graduate students Taylor Christian (left) and Melanie Stine attempt to imitate the Butler Wave on the Binghamton Geomorphology Symposium field trip.

Regents' Professor Dr. David Butler and two graduate students, doctoral student Melanie Stine and master's student Taylor Christian, attended the 43rd annual Binghamton Geomorphology Symposium in Jackson Hole, Wyoming, in late September, 2012. Faculty instructors Dr. Clayton Whitesides and Dr. Stephen Tsikalas also attended the conference. The theme of the symposium was The Field Tradition in Geomorphology. Two field trips were held prior to a day of papers and posters. The first field trip was a float trip to examine fluvial geomorphology along the Snake River in Grand Teton National Park. The second trip examined the glacial geomorphology in and adjacent to the national park. Dr. Butler was an invited poster presenter, and a paper from his poster entitled "The Field Tradition in Mountain Geomorphology" will be published in a forthcoming issue of *Geomorphology* that contains papers from the invited posters and oral presentations given at the conference.

Ecogeomorphology Book Published as Part of the Multi-Volume *Treatise on Geomorphology*



Regents' Professor Dr. David Butler, and Dr. Cliff Hupp of the U.S. Geological Survey, co-edited the just-published (March, 2013) *Ecogeomorphology* volume of the 14-volume *Treatise on Geomorphology* published by Elsevier and Academic Press. The volume contains 21 chapters on a variety of topics ranging from the interaction of geomorphic processes with riparian vegetation, to the geomorphic and hydrological effects of beavers. Dr. Butler co-authored five chapters in the volume, two with former doctoral students Dr. Clayton Whitesides and Dr. Stephen Tsikalas. Doctoral student Marty Wamsley co-authored one of the chapters with Drs. Butler, Whitesides, and Tsikalas. The volume, and the entire *Treatise*, is available in hard copy as well as through Elsevier's "Science Direct" website.

Geographic Educators Visit Manchester, England

In the spring of 2012, Dr. Boehm and several geographic education graduate students attended the annual conference of the Geographical Association, the United Kingdom equivalent of the National Council for Geographic Education. The meeting was held in Manchester, England, and the city was a pleasant surprise for American geographers. Once a dark, foreboding industrial city, perhaps analogous to Pittsburgh in the 1950's, the city is bright, busy, and looking to the future. There were over 700 U.K. teachers in attendance. Texas State graduate students, all on the conference program, included Carmen Brysch, Mary Curtis, Cheryl Frazier, Matt Patton, and Debbie Hann. There were several field trips in the Manchester area, and lots of excellent restaurants and pubs. On the way to the conference the graduate students stopped in London for a photo op at the Prime Meridian. How many geographers have done that? After the conference, Matt, Cheryl, and Debbie went to Edinburgh, and Carmen and Mary detoured through Paris, via the Chunnel, on the way home.

Faculty News

Linda Hammon to Attend Brown University Leadership Institute: *Thinking Geographically About International Issues*

Press release from Watson Institute for International Studies at Brown University

PROVIDENCE, RI, (DATE) – Linda L Hammon, an adjunct lecturer at Texas State University – Geography Department, was recently selected to attend a Summer Leadership Institute at Brown University.

The Institute, sponsored by the University’s Choices Program, will provide 25 selected teachers from across the country with an opportunity to learn about the geographies of Afghanistan and Pakistan, as well as resources for teaching about this region of the world. Using the scholarship and lessons found in Choices’ *The United States in Afghanistan* curriculum as a springboard, the Institute will explore how the Choices approach and curricular materials can be implemented to develop geographically literate students, capable of asking and answering the big questions in geography. The three-day program will also demonstrate strategies for introducing students to multiple perspectives on the U.S. role in this region of the world.

The Choices Program is a national education program designed to introduce substantive international content into secondary and post-secondary school classrooms. The program offers 40 curriculum units that can be used to integrate geographic literacy into U.S. history, world history, civics and current issues classrooms. All units use a problem-based approach to make complex international issues accessible and meaningful to students.

“Choices provides valuable tools for teaching the geographic and civic skills my students need to develop as citizens in our global society,” says Linda Hammon. “I am excited to learn more about Afghanistan, and to become more adept at using Choices materials to enhance geographic literacy in my classroom.”

As part of the Choices Summer Institute, Linda will facilitate the use of Choices material in her school and beyond. “We were impressed by Linda Hammon’s leadership skills, dedication to the field of geography, and potential to impact other educators in her community and state. We look forward to working with her,” said Choices Director Susan Graseck.

The Choices Program is affiliated with the Watson Institute for International Studies at Brown University and housed within Brown’s Office of Continuing Education.

Lawrence Estaville



Honors and Awards:

Distinguished Mentor Award, National Council for Geographic Education

Distinguished Service Award, Race, Ethnicity, and Place Conferences

One of the 20 members of Board of Directors of the National Marrow Donor Program headquartered in Minneapolis, MN that is the world leader in stem cell, marrow, and cord blood transplantation with a donor registry of 10 million people

Peer-reviewed Publications:

Estaville, Lawrence, Kristine Egan, and Abel Galaviz. 2012. *Texas Health Atlas*. College Station: Texas A&M University Press.

Estaville, Lawrence, Megan Trad, and Gloria Martinez. 2012. University Student Understanding of Cancer: Analysis of Ethnic Group Variances. *Journal of Cancer Education* 27 (3): 580-84. Published at Dartmouth College School of Medicine.

National Service:

Co-Director, Race, Ethnicity, and Place Conference, San Juan, Puerto Rico, October 2012. More than 600 people from 11 countries participated.

Other Service:

Established, via the Texas State Veterans Advisory Council, the Fidencio Leija Military Veterans Commencement Regalia Cords Fund to provide every military veteran who graduates from Texas State with free red, white, and blue commencement regalia cords commemorating their admirable service to our country and their academic achievement.

Dr. Richard Earl and Dr. Lawrence Estaville established the Military Veterans Geography Student Award for Academic Excellence that will honor one military veteran Geography student annually with a \$500 award and a plaque for academic excellence at Texas State.



Dr. Brock Brown granted a PDL for the Fall 2013 semester.



Dr. David Butler

- Received the Association of American Geographers' Melvin G. Marcus Distinguished Career Award from the Geomorphology Specialty Group at the 2012 Annual Meeting of the AAG in New York City.

- Named an honorary professor of International Studies at Texas State.



Dr. Richard Earl and Dr. Lawrence Estaville established the Military Veterans Geography Student Award for Academic Excellence that will honor one military veteran Geography student annually with a \$500 award and a plaque for academic excellence at Texas State.



Dr. Giordano will assume his duties as Chair September 1, 2013, when Dr. Philip Suckling, who has served as chair since 2005, returns to full-time faculty.



Dr. Ronald R. Hagelman, tenured and promoted to Associate Professor. Ron will assume the newly created position of Associate Chair effective September 1, 2013.



Dr. Don Huebner, Senior Lecturer of Geography, has been appointed Interim Director for the Freeman Ranch. Don will continue to carry his full teaching load in geography while assuming this new role.



Dr. Jennifer Jensen was awarded a Research Enhancement Program grant for FY 2012 to analyze explore the use of dense three dimensional point clouds obtained from low-cost high resolution imagery.



Dr. Osvaldo Muniz-Solari was selected to be a member of the CEPEIGE Academic Council. This official responsibility will imply some international travel to Ecuador where CEPEIGE has its main headquarter for all the Pan American countries (including USA and Canada).



Dr. Kevin D. Romig, tenured and promoted to Associate Professor.



Dr. Rene DeHon was appointed as Committee Chair for Student and Faculty Grant Awards, Gulf Coast Association of Geological Societies.

After 21+ years of service at Texas State, **Mrs. Joyce Lawson** has retired. We are thankful for her hard work and dedication over the past 8 years in Geography!



Welcome New Staff Members!



Katie Alonzo, Budget Assistant



Stella LoPachin, Administrative Assistant,
Undergraduate Program



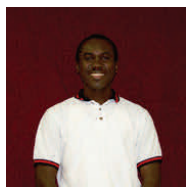
From the Graduate Coordinator... Dr. David Butler, Professor

Spring has once again arrived in central Texas, bringing with it loads of pollen, wildly fluctuating weather, and a graduation ceremony looming on the horizon. We are so proud of our graduate students in our department at Texas State! Four doctoral students are graduating in May (Todd Moore, Environmental Geography Ph.D., Dr. Rich Dixon advisor; Melanie Stine, Environmental Geography Ph.D., Dr. David Butler advisor; and Lee Stone and Andy Sansom, Geographic Education Ph.D.s, Dr. Dick Boehm advisor), on the heels of three who graduated in December, 2012 – Dr. Waverly Ray (Dr. Osvaldo Muniz advisor), Dr. Tianfang “Bernie” Fang (Dr. Yongmei Lu advisor), and Dr. Christi Townsend (Dr. David Butler advisor). Two doctoral students have recently defended their dissertations and are working on the final drafts of their dissertations in anticipation of summer graduation in August, Roberto Campos and Shelrie Holton, Geographic Information Science Ph.D.s, Dr. Sven Fuhrmann advisor. Other doctoral students are working hard on preparing dissertation drafts for summer defenses, and we wish them all the best. Nine master’s students graduated in December, and our current master’s students are turning in Directed Research projects and theses as well, so for both students and faculty the rush toward Graduation is a very busy time! Of course, all this activity is bittersweet, because like proud parents we faculty members are pleased to see our students moving on and beginning new life phases and careers, but we have spent many hours with you and we will miss you very much. Do please keep in touch, you’ll always be a part of each of our extended academic family!



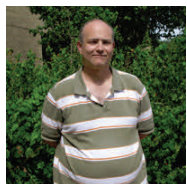
PhD Student **Laura Cano-Amaya**

- Elected president of the AAG Graduate Student Affinity Group.
- Awarded one of this year’s Dissertation Research Grants from the Association of American Geographers.
- College of Liberal Arts Graduate College scholarship recipient.



PhD Student **Nathaniel Dede-Bamfo**

- Awarded a \$3,000 research travel grant by the West African Research Center in Dakar, Senegal. The funds will be used to collect data for his dissertation research in Ghana.
- Working with Dr. Yongmei Lu in a GIScience seminar, PhD students Matt Patton, Nathaniel Dede-Bamfo, Junfang Chen, and Adam Mathews published a paper in *GeoJournal* entitled “College Students’ Consumption, Contribution, and Risk Awareness Related to Online Mapping Services and Social Media Outlets: Does Geography and GIS Knowledge Matter?”
- College of Liberal Arts Graduate College scholarship recipient.



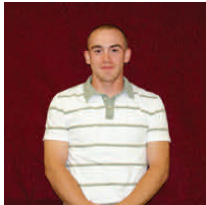
PhD Student **Larry Kleitches**

- Acceptance of article "Redirecting the Puck: Cultural Misinformation about Texas Reflected in Attitudes about Hockey and Film and Television Portrayals" for publication in *The Journal of the American Studies Association of Texas Vol. 43*.



PhD Student **Yan Lin**

- Offered a Doctoral Research Stipend Award from the Graduate College for work on dissertations during the Spring 2013 semester.
- College of Liberal Arts Graduate College scholarship recipient.



PhD Student **Adam Mathews**

- Awarded Doctoral Research Stipend Award from the Graduate College for work on his dissertations during the Spring 2013 semester.
- Working with Dr. Yongmei Lu in a GIScience seminar, PhD students Matt Patton, Nathaniel Dede-Bamfo, Junfang Chen, and Adam Mathews published a paper in GeoJournal entitled “College Students’ Consumption, Contribution, and Risk Awareness Related to Online Mapping Services and Social Media Outlets: Does Geography and GIS Knowledge Matter?”.
- Attended the New Zealand Geographical Conference 2012 in Napier, Hawke’s Bay, New Zealand in December and presented a paper entitled “An airborne LiDAR-based methodology for vineyard parcel detection and delineation”.
- Traveled to Charles Sturt University in Wagga Wagga, NSW, Australia as part of his Endeavour Award by the Australian government. The Endeavour Award is a highly competitive, international, merit-based scholarship program that provides opportunities for students to study, research, and develop professional skills by working closely with a sponsor in Australia.
- College of Liberal Arts Graduate College scholarship recipient.

PhD Student **David Nicosia**

- Awarded a Doctoral Research Stipend Award from the Graduate College for work on their dissertations during the Spring 2013 semester.



PhD Student **David Parr**

- Selected to receive the South Central Arc User Group Graduate Scholarship.



PhD Student **Graciela Sandoval**

- Elected as the secretary-treasurer of the AAG Graduate Student Affinity Group.
- Honored with a \$1,500 academic scholarship from Atlantic Housing.
- College of Liberal Arts Graduate College scholarship recipient.



PhD Student **Michael Schloz**

- Tied for the first place award from the AAG Geography Education Specialty Group paper competition (the Gail Hobbs student paper award).



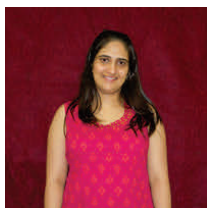
PhD Student **Ruoqing W. Scholz**

- 1st place student paper competition (\$400 cash award) by the Spatial Analysis and Modeling (SAM) Specialty Group.



PhD Student **Melanie Stine**

- Received a research grant from the American Alpine Club in support of her dissertation fieldwork this summer.



PhD Student **Kanika Verma**

- Presented with a \$10,000 Graduate Scholar Award by the Golden Key International Honor Society. The award was given in recognition of her groundbreaking research in geospacial thinking.
- At the annual Texas State Student Organizations Council Boko Awards, Kanika was recognized with the Boko Lifetime Achievement Award. This award recognizes a student that has made a lasting contribution to the Texas State community throughout his/her academic career. This student has achieved academic excellence, held leadership positions, shown bobcat pride, and is a role model to students. Kanika has been the president of the Indian Student Association during this academic year, and the Indian Student Organization was recognized with the Program of the Year Award for its Diwali event last fall.
- Awarded a \$2,000 ASG scholarship for academic achievement and university service.
- Tied for the first place award from the AAG Geography Education Specialty Group paper competition (the Gail Hobbs student paper award).
- College of Liberal Arts Graduate College scholarship recipient.



Ph.D. Student **Elyse Zavar**

- Awarded one of this year's Dissertation Research Grants from the Association of American Geographers.
- Awarded Doctoral Research Stipend Award from the Graduate College for work on her dissertations during the Spring 2013 semester.
- AFMS Scholarship recipient.
- College of Liberal Arts Graduate College scholarship recipient.

The **Association of American Geographers** (AAG) is the largest professional organization of geographers in the world. More than 8000 members will attend the annual meeting in Los Angeles, California in April 2013. Nearly 40% of those attending will be students. The Graduate Student Affinity Group supports graduate students in the AAG, and it is one of the largest specialty groups in the AAG.

For 2012-2013, the chair is David Parr, a PhD student in our department. He and his colleagues have taken an active role to support graduate professional development, research, and activities within the AAG. GSAG sponsors a yearly paper and research award competition that awards over \$1500 in awards. At the AAG meeting, GSAG runs panel discussions on issues important to graduate students and a plenary from a previous graduate student to discuss their grad school experience. This year, Jason Dittmer (University College-London) will present a talk in April called "How graduate school set me up for success/failure". GSAG will bring together students for fun social events for bonding and networking.

This year, David Parr will also be representing graduate students at the AAG Council, the governing body of the AAG. This is a great opportunity to support the needs and issues that graduate students face in geography and academia.

For more information, you can visit the GSAG website: <http://www.gsagaag.org>.

GIScience Program goes to Germany!

Dr. Sven Fuhrmann, Associate Professor for GIScience and Geovisualization, has established a new educational opportunity for our undergraduate program: a GIScience-focused study abroad experience in Kiel, Germany. His innovative program will introduce eighteen of our junior and senior-level students to project and client-based GIScience work.



Ships in the Kiel Harbor

Dr. Fuhrmann has a longstanding collaboration with the International Center, GIScience faculty and the Geography program at the University of Kiel in Germany. During one of the research stays in Kiel, Dr. Rainer Duttmann (Chair of the faculty for Physical Geography, Environmental Geography and Geoinformation) and Dr. Fuhrmann decided to bring German and U.S. students together to work collaboratively on a local GIS project. On May 17th, 2013 this idea will become reality: Eighteen Texas State students, David Parr (Teaching Assistant) and Dr.

Fuhrmann will travel to the north-

ern part of Germany to immerse in culture, meet remarkable people and start an academic journey that will broaden their horizons and open their future to new possibilities.

Offering the two popular courses GEO4427 (GIS Design and Implementation) and GEO 4310 (Regional Field Studies) the program is fully booked and seats had to be added to the program to meet demand. All students will be in residence for five weeks and work with German students on a project tentatively named "CHANGE" where they will investigate sustainability issues with a focus on local and regional environmental patterns. The regional field studies aspect will immerse students in the local culture, history and expressions of space, place and identity. Excursions will bring the group to Schleswig, Luebeck, Hamburg and Berlin. As geographic explorers we will visit one of the first planetariums, see the northern culture of the Vikings, eat where seafarers of the Baltic Sea met in the 16th century, learn about harbors, industrial and demographic change in Hamburg, meet artists of the graffiti scene, and come together in the new cultural and economic center of Europe: Berlin.

The study abroad GIScience program will formally close on June 21, 2013 after students present their project results. However students will have two days to say goodbye to their new friends and the City of Kiel that became home. Kiel will not make it easy for our students to say goodbye, because on the last day of class the biggest sailing festival of the world (Kiel Week) will start and the city will turn into a large (mostly free) concert venue, with food, carousels, and sailing ships from all over the world.

Make sure that you follow the GIScience blog at studyabroad.cartovisions.com and consider joining this program in 2015!



Sailboats in Kiel during "Kiel Week"

Study Abroad in Cuba!

Dr. Sarah Blue will be leading a field study course to Cuba in June 2013. Educational travel to Cuba has been limited, as has all travel to Cuba from the US, due to the US embargo that has been in place for 50 years. During the Clinton years, the United States government opened up educational and people-to-people exchanges with Cuba in a policy of engagement that was subsequently reversed under the George W. Bush administration. In January 2011, the Obama administration re-established educational exchanges and made short-term study abroad programs possible once again. Dr. Blue has been travelling to Cuba and conducting research there since 1996. This is her first opportunity to bring a group of students to the island.

The regional field studies course to Cuba focuses on environmental sustainability, globalization and development. Dr. Blue will be drawing on her connections with faculty in the geography department at the University of Havana to provide an intensive 2-week educational tour. Following a week in the classroom at Texas State prior to departure, the students will spend 2 weeks in Cuba experiencing karst topography, mangrove swamps, sugar mills, a walking tour of colonial Havana accompanied by a Cuban architect/urban planner; a visit to a local health clinic to learn about the Cuban health system and Cuban medical internationalism, to a literacy museum to learn about international literacy programs, to an urban garden and a collective farm where we will learn about agro-ecology and vermiculture, and a visit to the biosphere reserve *Las Terrazas*. We will conclude the trip with 2 days of directed research in Havana, where Dr. Blue will pair the Texas State students with students from the University of Havana to conduct a study on urban agriculture and tourism.

Student Planning Organization



In the 2012 fall semester, The Student Planning Organization went on an educational planning trip to Oklahoma City for five days. Our goal was to look at the infrastructure of the city and to better understand different methods of planning. We went to different places around Oklahoma City to see how they are revitalizing certain areas and to also see their land use implementation. At the end of the trip we were able to sit down and discuss Oklahoma City's Master Plan Update with multiple city planners and we got a better understanding of the direction that Oklahoma City is now going. This semester we are continuing to bring in guest speakers who specialize in different types of planning, go out to local cities to look at their planning implementation, as well as holding hands

-on workshops so members can become better acquainted with different types of planning positions. We are also working with The City of Austin to allow our members to shadow city planners which will allow members to create more networking opportunities. Along with the other Geography Organizations, SPO will volunteer for Bobcat Build this March. At the end of the semester SPO is planning to go to Albuquerque, New Mexico for our educational planning trip. Our Organization is very lucky to be affiliated with the Urban and Regional Planning Degree in the Geography Department and with the help of our faculty advisor, Dr. Kevin Romig, The Student Planning Organization has been able to thrive this year.



The Texas State Chapter of the American Society of Photogrammetry and Remote Sensing

was re-activated in 2012. ASPRS serves to advance knowledge and improve understanding of mapping sciences to promote the responsible applications of photogrammetry, remote sensing, geographic information systems, and supporting technologies. Members attended a field trip in the spring to Zebra Imaging in Austin to tour their facility and learn about digital holographic technology. Other activities in 2012 included a video conference with Ray Byrnes, USGS Liaison for Satellite Missions; a presentation by Kristina Tolman on UAV imaging activities at the Meadows Center for Water and the Environment; and a presentation by Jackie Philips on her experience as an intern at NASA Goddard Space Flight Center. MS students Guinevere McDaid and Justin McCreight presented their research at the ASPRS annual meeting in Baltimore, Maryland in March 2013. MS student Victoria Stengel (2012 President) spearheaded efforts to reactivate the chapter and Dr. Jensen serves as the faculty advisor.

Texas State University GIS Project Addresses the Scope and Impact of Wastewater Spills on Edwards Aquifer Recharge Zone

As a capstone undergraduate GIS course, Design and Implementation of GIS (Geo4427) continuously serves as a great opportunity for Texas State University students to apply GIS in order to address issues of importance to local, regional, and state communities. Two of such projects recently conducted under the supervision of Dr. Yongmei Lu during the Fall 2011 and Spring 2012 semesters examined the impact of wastewater spills on the Edwards Aquifer. These two student projects, each was conducted by a group of four junior / senior students respectively created a GIS database documenting all wastewater spills that were reported to and recorded by TCEQ (Texas Commission on Environmental Quality) in Regions 11 & 13 since 2004, focusing on Bexar County, Comal County, Hays County, Travis County, and Williamson County.

(Lu continued on page 14)

The **Student Sustainable Farm at Texas State University** has been a great learning opportunity for students. Started in spring 2012 by Dr. Ken Mix, the farm has been a valuable resource, not only for students to learn, but for faculty and staff at the university as well, as it provides fresh produce to those who wish to purchase from the farm. Although it can be considered a small scale operation, the student sustainable farm is a big responsibility. This semester there are three farm managers, who are either undergrad or graduate students. Some of the responsibilities falling upon them include pest/weed management, planting, harvesting, delivering, ordering seeds, taking care of the orders received by faculty and staff, student oversight, and much more.

Dr. Mix has made this operation a learning experience for his students by incorporating working at the farm as part of their weekly homework assignments for the classes Dr. Mix teaches. The hands on experience they are receiving is not only beneficial to them as students, but it will continue to benefit them in their professional lives. In addition, the experience they are gaining helps keep the farm operating effectively.

The Student Sustainable farm is also a great way for faculty and staff at the University to practice a more sustainable and healthy lifestyle. The produce grown is insecticide free and fresh, and it is delivered the same day it is harvested. The farm has a variety of produce including collard greens, kale, radishes, carrots, cucumbers, beans, squash, potatoes, onions, and this semester's most exciting crop, artichoke, amongst many others.

Currently the farm is located on highway 21 but next fall it will be relocated on the same plot of land Bobcat Blend uses for their operation due to the current plot being sold to the San Marcos Municipal Airport. The Mission of the Texas State Student Sustainable Farm is to create an eco-system which can educate, nourish, and provide research opportunities to all students, faculty, staff and the community, and I am happy to report it is doing just that and will continue to do so in the years to come.



Congratulations to undergraduate geography major **Hope Shimek** who has been awarded the Richason Undergrad Scholarship, one of ten \$1,000 scholarships presented by the national geography honors society Gamma Theta Upsilon (GTU). Hope has an excellent academic record. She is also very active within departmental student organizations currently she serving as GTU Membership Secretary, Co-Vice President of ECO (Environmental Conservation Organization) and Treasurer of SWIG (Supporting Women in Geography).



Undergraduate geography student, **Jacqueline Phillips**, has been accepted to a 10-week research/internship program with NASA's Goddard Space Flight Center.



Environmental Conservation Organization

In the fall 2012 semester, The Environmental Conservation Organization started the Recycling Tailgate Program. With funding from the Environmental Service Committee the Recycling Tailgate Program was a huge success! The program took place on Saturdays during every home football game. ECO partnered up with HEAT and together all the members helped divert all recyclables from the trash to the recycling containers. This semester ECO has participated in multiple volunteer events including volunteering for the San Marcos River Foundation to help remove water hyacinth, road clean ups through the City of San Marcos, and River Clean Ups on the San Marcos River. In addition to this, this spring semester ECO will be participating in Bobcat Build. ECO's big event for this semester is The Earth Day Extravaganza. It will be a week-long event starting on Earth Day (April 22 - April 26). The focus of this event is to promote sustainability on campus and help educate Texas State students, faculty, and staff about the environment. We have had a really exciting and rewarding year and are proud to be a part of this wonderful Geography Department.

In the fall 2012 semester, The Environmental Conservation Organization started the Recycling Tailgate Program. With funding from the Environmental Service Committee the Recycling Tailgate Program was a huge success! The program took place on Saturdays during every home football game. ECO partnered up with HEAT and together all the members helped divert all recyclables from the trash to the recycling containers. This semester ECO has participated in multiple volunteer events including volunteering for the San Marcos River Foundation to help remove water hyacinth, road clean ups through the City of San Marcos, and River Clean Ups on the San Marcos River. In addition to this, this spring semester ECO will be participating in Bobcat Build. ECO's big event for this semester is The Earth Day Extravaganza. It will be a week-long event starting on Earth Day (April 22 - April 26). The focus of this event is to promote sustainability on campus and help educate Texas State students, faculty, and staff about the environment. We have had a really exciting and rewarding year and are proud to be a part of this wonderful Geography Department.

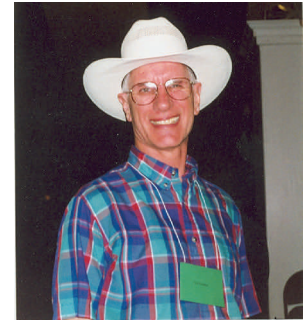


Kimmel, continued from page 1

We have only one home and geography's holistic perspective is crucial to help us learn to live on Earth in a sustainable and satisfying way. My second theme was that "The test is not the test. The real test is in the future, how well you have served our Earth home." More specifically, I told my River Basin Management students that their ultimate final exam is the quality of their river's estuary. Difficult tasks are before us, but I strongly believe that Texas State Geography will continue to make major contributions to life on Earth.

People ask if I have any plans. I don't play golf and I am not moving to Sun City or Sin City. But I am working on four more books, a web site, and a seminar/workshop series. These are all about the *oikos* of rivers, even the book titled "Seeking Wisdom in a Tiny Boat." But my primary job is to spoil my two-year old grandson, Micah. I have already built his boat.

So, alumni, students, faculty, and staff of the Department of Geography at Texas State University, I thank you from the *benthos* of my heart. I'll look for you on the river!



Costa Rica, continued from page 1

As part of an initial contact with the Costa Rican School of Geographical Sciences, Angela Wranic; Texas State graduate student, had the opportunity to receive assistance and gather data in San Jose for her doctoral dissertation in geographic education. The MOU will expedite the work of another doctoral student in environmental geography when Laura Cano Amaya will have the opportunity to develop her field work in Costa Rica this year. In the near future our Department expects to receive a visiting professor to do research, and another faculty who will apply to our graduate program to pursue a doctoral degree in environmental geography.

The School of Geographical Sciences has one of the best infrastructures to prepare geographers in Central America. For additional information please contact Dr. Osvaldo Muniz-Solari.

Lu continued from page 12

In order to raise public awareness about water quality issues and to impact policy making and practices related to protecting Edwards Aquifer, the student teams developed interactive web mapping to enable public's inquiry and visualization of the wastewater spills. This interactive mapping function allows one to query wastewater spills based on the locations to find out information about accident date, spilled amount, possible cause(s), and action that was taken to fix the spill. These projects received widely public attention. The student teams presented their projects at multiple venues. The projects were reported by a number of local and regional media outlets, including University Star, San Marcos Daily, Herald Zeitung (New Braunfels), Plaza De Armas (San Antonio), WOAI News 4 (San Antonio), San Antonio Express News, YNN Austin (News 8 Austin), and others. These projects are believed to have potential impact on not only wastewater and spills management but also urban development and encroachment in the related regions. Both projects were sponsored by Great Edwards Aquifer Alliance. More details and the interactive mapping of the projects can be found at <http://geosites.evans.txstate.edu/g4427/S12/GEAA/index.html> and <http://geosites.evans.txstate.edu/g4427/F12/GEAA/index.html>.

Upcoming Events

National Council for Geographic Education (NCGE)
Denver, Colorado
August 1-4, 2013

Binghamton Geomorphology Symposium
New Jersey Institute of Technology
October 18-20, 2013

Southwest AAG (SWAAG) Division Meeting
Nacogdoches, Texas
October 24-26, 2013

Applied Geography Conference
Annapolis, Maryland
October 30 – November 1, 2013

Geography Student Research Symposium (TXGSRS)
Texas State — Evans Liberal Arts
April 2014

Association of American Geographers (AAG) Annual Meeting
Tampa, Florida
April 8-12, 2014

20th Annual Geography Alumni Reunion and Student Celebration (ARSC)
Wild Acres and Heirloom Blooms, Wimberley, Texas
April 26, 2014

National Council for Geographic Education (NCGE)
Memphis, Tennessee
July 31 - August 3, 2014

Race, Ethnicity and Place Conference
Fort Worth, Texas
October 22-24, 2014



2013 Alumni Reunion and Student Celebration Awards and Picnic

