

TEXAS STATE  
UNIVERSITY -  
SAN MARCOS

DEPARTMENT  
OF GEOGRAPHY

TEXAS STATE  
UNIVERSITY  
SAN MARCOS  
*The rising STAR of Texas*



# GeoNews

Volume 17

Spring 2011

## Dr. David Butler Named Regent's Professor



During fall 2010, Dr. David Butler was named a University Distinguished Professor and Regents Professor at Texas State. The awards, announced by President Denise Trauth, honors individuals whose performance in teaching, research, and service has been exemplary and recognized at the state, national, and international levels.

### Inside this issue:

- Greetings from the Chair... 2
- Alumni Focus 3-4
- Faculty News 5-6
- Undergraduates & Student Organizations 7
- From the Graduate Coordinator 8
- Graduate Student Activity & Awards 8-9
- Alumni Reunion Registration Form 13

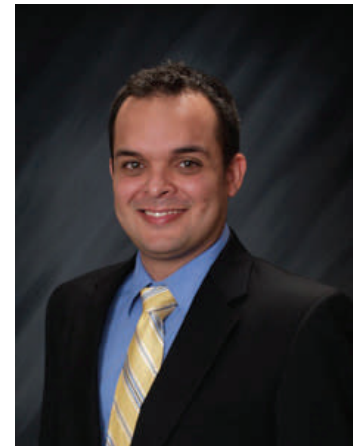
Butler has received numerous awards, including Texas State's Presidential Award for Excellence in Scholarly and Creative Activity and the Distinguished Teaching Achievement Award from the National Council for Geographic Education. He was the founding director of the James and Marilyn Lovell Center for Environmental and Hazards Research, in the Department of Geography. He has authored or edited six books, seven special issues of journals, more than 35 book chapters, and



*Continued on page 6*

## AAHHE and ETS honor Dr. Edris Montalvo

On March 5, during the national conference of the American Association of Hispanics in Higher Education (AAHHE), the AAHHE and the Educational Testing Service (ETS) honored Dr. Edris Montalvo with second place for the AAHHE-ETS Outstanding Dissertation Award. A total of 57 dissertations from a variety of academic disciplines were submitted for the competition from across the U.S. Dr. Montalvo's dissertation is titled, "Recruitment and Retention of Hispanic and African-American Undergraduate Students in Public Universities in the U.S., 2000-06."



*Continued on page 3*



## Greetings from the Chair... Dr. Philip Suckling, Professor and Chair

This has been quite the academic year thus far! Very large record enrollments at Texas State, include another new record number of undergraduate majors (in the 640 range), over 400 minors among geography, geology and nature and heritage tourism and a solid 200+ geography graduate enrollment. This has presented a significant challenge in accommodating students with classes.

Last September, a very significant fire occurred in geography classroom ELA 316 (the cause of which became a criminal investigation). That meant finding other classrooms on campus for courses displaced for the entire semester, while repairs to the room were made. Smoke damage to the third floor hallway and some faculty offices provided a significant disruption for many weeks. The classroom was repaired in time for the Spring semester. These events (and others) are all part of a day's (or semester's) work for us all!

Congratulations are in order to Dr. Sven Fuhrmann who was promoted with tenure to Associate Professor effective last fall. Given that Sven arrived in the department at the same time as me (2005), this was also a meaningful milestone in that it reminds me that time is marching on – the department continues to evolve with new faces, new ideas and, above all, new inquisitive

students. Brian Cooper was also elevated from his temporary status as Lecturer to a fully-funded position as Senior Lecturer. Brian plays an especially important role in teaching large sections of introductory world geography (along with some advanced courses), thus partially filling the void made by Doc Augustin's retirement. The department recently completed a search for a new Assistant Professor in human geography with a regional geography emphasis, to join the department in Fall 2011. Dr. Sarah Blue, who has a PhD from UCLA and is currently on the faculty at Northern Illinois University, will be our new colleague. Dr. Blue has a regional specialization on Latin America with a particular interest in Cuba. We also welcomed one new faculty member to the department last Fall – Nikki Williams. Nikki is the first African-American faculty member in the history of the department. She brings new strength to our curriculum within the rapidly emerging field of medical/health geography.

### Goodbye Parking Lot, Hello New Undergraduate Academic Building !

Construction photo showing Evans Liberal Arts at the bottom; the new academic building will house fellow Liberal Arts departments of political science, psychology and sociology; political science will be vacating Evans leaving only geography (1<sup>st</sup> and 3<sup>rd</sup> floors) and anthropology (2<sup>nd</sup> floor) as the Evans tenants....

Photo taken October 2010. The Evans building is in the lower foreground of the photo (i.e. "south" is at the top of the photo).



## Alumni Focus

### Geography Department Alumni take the lead in Renewable Wind Energy



(Photo: left to right)

Greg Klaus (BS 96, MAG 99, PhD Candidate);  
Michelle Bussemey (MS 07); Steven Roberson (MAG 08);  
Marcie Mertz (BS 04, MA Legal Studies 06);  
Jeremy Soules (BS 05, MS 10)



<http://www.geo.txstate.edu/alumni/reunion.html>

Five Geography Department Graduates are now working together in the Wind Energy Industry at E.ON Climate & Renewables in Austin.

E.ON Climate & Renewables currently operates eight wind farms in Texas with an installed power capacity of 1,633 Megawatts (MW) comprising 1,140 Wind Turbines erected in the state thus far.

The Company's Roscoe Project is the world's largest wind farm with 627 wind turbines and a total capacity of 781.5 MW, enough power to supply 235,000 Texas homes.

Every Megawatt of wind power installed — \* Powers almost 300 homes; \* Is equivalent to taking 315 cars off the road; \* Avoids the release of 1,800 tons of CO<sub>2</sub> per year; \* Eliminates roughly 9 tons of Sulfur Dioxide (SO<sub>2</sub>)- a leading cause of acid rain.

*Montalvo, continued from page 1*

The first-place winner was from the University of Chicago and the third place co-winners were from the University of Oregon and Cornell University. Honorable mention finalists included Ph.D. dissertations from Harvard, Stanford, UCLA, and the University of Texas at Austin.

Dr. Montalvo's dissertation was the first in the discipline of Geography to receive this honor as well as the first from Texas State. He received a Ph.D. in Geography from Texas State in May 2010 and he is currently an assistant professor at Cameron University. Dr. Lawrence Estaville was Dr. Montalvo's dissertation advisor.

For more information about the AAHE-ETS Outstanding Dissertation Award, visit:  
[http://www.ets.org/newsroom/news\\_releases/hispanic\\_scholars\\_honored](http://www.ets.org/newsroom/news_releases/hispanic_scholars_honored)

### Two Texas State AAG Nystrom Dissertation Award Finalists

At the annual AAG (Association of American Geographers) meeting to be held in Seattle in April, the five finalists for the AAG Nystrom Dissertation Award (i.e. the competition for the best PhD dissertation awarded in the previous year) will present papers based on their dissertation. This represents the final stage in the competition. Texas State PhD alums have won this prestigious award twice in the past: Lynn Resler (PhD 2004; advisor – Butler); Xuwei Chen (PhD 2006; advisor – Zhan).

For this year's competition, TWO of the five finalists are doctoral graduates from our department: Jose Silvan-Cardenas (advisor – Zhan) and Edris Montalvo (advisor – Estaville). Note that both of our finalists are Latinos, which is newsworthy given the University's new HSI status.

See: <http://meridian.aag.org/callforpapers/program/SessionDetail.cfm?SessionID=12989> for the session details. Congratulations to Jose, Edris and their advisors – and frankly to all of us in the Department of Geography..... This is indeed a distinct honor for Texas State University-San Marcos and evidence of the maturing of our PhD program as among the top in the nation!



#### Dr. Brian Earle — Award Recipient:

Dr. Brian Earle (Instructor, Dallas County Community College, who received his PhD from Texas State in December 2008) received NCGE's Natoli Dissertation Award.



## Fenda Akiwumi finds water solutions with cultural relevance

*Based on Texas State University website article*

Fenda Akiwumi, a Texas State alumna and a professor of geography at the University of South Florida, is studying ways to make water more accessible to rural villages in Africa through her work with UNESCO and the National Science Foundation. Her work integrates the scientific study of water resource management and local community views of water resources.

"Water is life itself and a human right. So it is critical that we understand that people view water in different ways," Akiwumi says.

After working for the government of Sierra Leone for 14 years, Akiwumi earned her PhD in environmental geography from Texas State University-San Marcos. Her doctoral work at Texas State looked at water resources management, through social, cultural and political lenses.

"I saw that in traditional settings, water has major spiritual and social dimensions," Akiwumi says. "A river might be a sacred site where rituals have taken place for generations, or it might be a social setting for women. Modern Western approaches view water as an economic good. A hydrogeologist decides where the best place is for a well based on scientific and engineering reasons, but in reality, that might not be the best place at all for the people.

"Inevitably, the failure of water projects in the rural areas could be attributed to differences in water culture."



## Texas Alliance for Geographic Education (TAGE) Co-Coordiators



*Quoted from TAGE Spring 2011 newsletter*

Texas Alliance Co-Coordiators, Jo Beth Oestreich, and Sarah Bednarz are continuing previous Alliance initiatives to encourage and concentrate resources on the establishment and expansion of regional Alliance groups.



The Friends of Geography (FOG) organization has been operating successfully in the Houston area for over 20 years. The San Antonio-Austin Geographic Educators (SAGE) and Geographic Educators of the Metroplex (GEM, Dallas-Fort Worth) continue to work on strategies for providing much needed resources and training to educators in their respective areas. Geography educators in El Paso have designated their regional group as EPAGE (El Paso Geographic Educators) and are working to build a membership base. The Alliance supports the development of a West Texas group in the Lubbock area and an organization for the Lower Rio Grande Valley region of our state. In order to sustain effective successful local staff development and geographic information support, we want to help organize the leadership team in this region too.

Additionally, in collaboration with the Grosvenor Center, the Alliance will host teachers and students from the Valley to participate in a summer academy. Regional leadership workshops will also be hosted, revisiting those who participated in leadership training last year, and supporting other areas in our state not fully represented at this point in time. A major focus for this year is to assist geography educators statewide to prepare for the End of Course examinations (EOC) in World Geography Studies. The Alliance will host several workshops and participate in workshops around the state this spring, summer and in the fall at TCSS. The workshops will focus on geographic content, lesson activities, suggested on-line sources, and developing of questions for the EOC in geography.

Sarah and I look forward to working with you in long-range planning for our Alliance and partnership with NGS, and to assist you in your geographic educational instruction and professional development needs.

## Richard Boehm receives NCGE Distinguished Mentor's Award

The 2010 National Council for Geographic Education (NCGE) Distinguished Mentor's Award was awarded to Dr. Richard G. Boehm. Dr. Boehm is a Professor and Jesse H. Jones Distinguished Chair in Geographic Education, Director of The Gilbert M. Grosvenor Center for Geographic Education, Texas State University-San Marcos and Co-coordinator of the Texas Alliance for Geographic Education. He has also served as president of the NCGE and most importantly, he is a mentor to many young students and professionals in the arena of geographic education.

Dr. Boehm earned his B.S. in Social Studies and his M.A. in Geography from the University of Missouri-Columbia. He then earned his Ph.D. in Geography from the University of Texas at Austin. He has received the Distinguished Teaching Achievement Award from the NCGE in the fall of 1985, and later major awards in geographic education from the Association of American Geographers, the National Geographic Society, and the NCGE. (for additional information, please visit: <http://www.geo.txstate.edu/tage/newsletters/Fall%202010%20Newsletter.pdf>)



## 2002 Canyon Lake flood may offer clues to Mars

*Adapted from Austin American Statesman, July 2010*

In the summer of 2002, Mark Fonstad got the chance to do research on something for which no one could have planned. A flood that reshaped the area's geological landscape, on a scale that normally would have taken thousands of years, tore through a gorge at the base of Canyon Dam, carrying massive boulders as if they were pebbles, scouring the walls and deepening the valley as they went. The waters caused \$87 million in damage and destroyed or damaged almost 500 homes. They also carved a large, picturesque canyon into the landscape.

The data collected by Fonstad and his research partner, Michael Lamb of the California Institute of Technology, on the area before, during and after the flood has applications here on Earth — and on Mars. The research can be used to determine how unstable a river is and whether its waters could erode rock 10 feet deep, information that would be useful in making engineering decisions, such as whether to build a bridge over a "problem river," Fonstad said.

The researchers also hope their work will offer insight into how the canyons on Mars were formed. To understand how a Central Texas flood can be tied to the Red Planet's geography, one must go back to 2002. Thanks to a wet spring, Canyon Lake — normally at 909 feet — was already full. Then, on June 30, rains swept in from the Gulf and stalled over the Hill Country for five days, dropping up to 45 inches in areas north and west of San Antonio. Localized rainfall combined with runoff from upriver, pushed things over the edge.

When the lake reached 943 feet, the U.S. Army Corps of Engineers opened the floodgates at Canyon Dam full blast in an attempt to reduce the volume of water heading toward the spillway, the part of the dam that allows controlled overflow and helps prevent water from topping the dam.

Billions of gallons of water spilled forth from the side of the dam and tore into the Guadalupe River. The limestone walls of the valley below were very weak, made up of loosely connected blocks, Fonstad said. The floodwaters picked up some 70,000 tons of rock and carried them downstream, carving 70 feet deep into the canyon floor in some places.

The torrent uncovered fossils, ancient shells and freshwater springs. Fonstad and Lamb compared topographical images to determine how much earth had been washed away below Canyon Dam. Fonstad said that using data collected on the Guadalupe River flood, he and Lamb can estimate the size of floods on Mars and how much rock was involved to create that planet's many canyons and gorges.

*Butler, continued from page 1*

more than 130 papers on geomorphology, biogeography, mountain geography, and natural hazards. His 1995 book *Zoogeomorphology* (Cambridge University Press) received the G.K. Gilbert Award for Excellence in Geomorphological Research from the Geomorphology Specialty Group of the Association of American Geographers (AAG), and he has received the Distinguished Career Award from the AAG's Mountain Geography Specialty Group. He is the chair of the Steering Committee of the annual international Binghamton Geomorphology Symposium, and serves on the editorial boards of several international journals, including *Geomorphology*, *Earth Surface Processes and Landforms*, *Physical Geography*, *Applied Geography*, and *Geography Compass*.

See Page 12 for some of Dr. Butler's activities while on Development Leave!



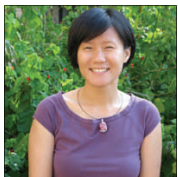
#### **Lawrence Estaville — Texas Atlas Project**

Texas A&M University Press has accepted for publication the peer-reviewed, scholarly Texas Health Atlas. Lawrence Estaville, PhD, director of the Texas Atlas Project, Kristine Egan, PhD, and Able Galavis, MD are the book's authors. Production is now mid-way on a third A&M Press atlas, the Texas Crime Atlas, and work on the Texas Education Atlas has been launched. Texas A&M University Press envisions a series of atlases to become the Texas Atlas Collection.



#### **Sven Fuhrmann — Promotion and Tenure**

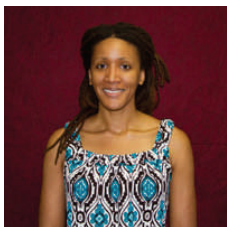
Dr. Sven Fuhrmann was promoted from Assistant Professor to Associate Professor and also received tenure!



#### **Niem Huynh — Recognized**

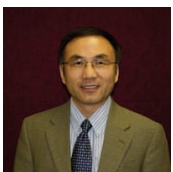
Dr Niem Huynh, Assistant Professor, was presented with the E Willard and Ruby S. Miller Award for Research in Geographic Education at the National Council for Geographic Education conference in Savannah, GA.

Dr. Niem Huynh also received one of the 2010 National Council for Geographic Education (NCGE) E. Willard and Ruby S. Miller Grants for Research in Geographic Education. These grants are awarded by NCGE's Research Committee. Dr. Huynh was presented with her grant at the 2010 annual NCGE Conference held in Savannah, GA.



#### **Nikki Williams — New Tenure-Track Faculty Member**

Nikki Williams began with the department as a tenure-track Assistant Professor specializing in medical/health geography. Ms. Williams is a PhD candidate (Texas A&M University) and has returned to Texas State as a new faculty member. She received her MS in Geography from Texas State in 2005 as well as her BS in Cartography/GIS/Remote Sensing in 2003.



#### **Ben Zhan — Grant Funded**

Ben Zhan received funding of a half million dollar grant from the U.S. Environmental Protection Agency. The title of the project is "Air Pollution-Exposure-Health Effects Indicators: Mining Massive Geographically Referenced Environmental Health Data to Identify Risk Factors for Birth Defects." The awarded amount is \$499,987 for 36 months starting 02/01/2011.

Ben is the PI of the project. Co-PIs on the grant include Dr. Jean Brender from the Texas A&M Health Science Center, Dr. Peter Langlois from the Texas Department of State Health Services, and Dr. Jing Yang from UNCC.

## Environmental Conservation Organization/ECO (formerly NAEP)

*Submitted by Layne Dueterhaus*

Why ECO? There are a number of different reasons why we changed the name to the Environmental Conservation Organization, or ECO. The biggest reason is because we want to be more welcoming to all students who care about the environment, not just those who plan on becoming environmental professionals. We voted on a number of different names before deciding on the ones we did. Our members voted, via email, on other name possibilities like Texas State Environmental Association, Sustainable Texas, Sustainability Now, etc. Our purpose statement has changed slightly. We still encourage environmentalism on a professional level, but our main focus is to encourage sustainable practices for the 21st century. We intend to educate the Texas State/San Marcos community about how they can lessen their impact on the planet, take action as an organization to lessen the University's impact, and increase student appreciation of nature and the environment we are working to defend.

### Monthly Farmers Market!

The community non-profit, Edible San Marcos, and the Environmental Conservation Organization are coordinating a monthly Farmers Market on campus March 3rd, April 6th and May 4th. [http://www.geo.txstate.edu/contentParagraph/05/content\\_files/file/farmersmarket.pdf](http://www.geo.txstate.edu/contentParagraph/05/content_files/file/farmersmarket.pdf)

The farmers market will be open 11:00 a.m.-3:00 p.m. each of these days on the Quad.

The market will feature fresh, sustainable, local produce. Prepared foods include tamales (with vegan and vegetarian choices), beignets, pralines and British food from Full English Foods. The market also offers grass-fed beef, raw cheese, fair-trade organic coffee, fresh produce, organic soaps, lotions, granola, nuts, salsas, fish, jewelry and more.

For more information, visit the Environmental Conservation Organization website at [www.geo.txstate.edu/studentorgs/naep/index.html](http://www.geo.txstate.edu/studentorgs/naep/index.html)



## Texas State Students Get Involved in a Community

*Submitted by Hans Friedel*



I thought you might enjoy seeing some of your Texas State Geography students making a difference in the nearby community of Lockhart. We started a volunteer community service organization called "Imagine Lockhart" promoting: sustainability, public safety, city beautification, public artwork, identity creation, historic preservation, resource conservation, and better communication. We hope to unite the community together as an active participant and key stakeholder in future planning efforts. In one month our mailing list has grown to over 150 members!

We created a fifteen minute collaborative video documenting our first meeting. It will be presented to attendees of a city-wide revitalization meeting bringing together elected officials, committee members, and important stakeholders:

[http://www.youtube.com/watch?v=v\\_nYE6RqBSw](http://www.youtube.com/watch?v=v_nYE6RqBSw)

Feel free to 'like' Imagine Lockhart on Facebook.

### Featured in the video from Texas State University are:

Catrin Bennet, current Master of Applied Geography student

Bethany Hicks, current Geography student

Hans Friedel, current Master of Applied Geography-Land Management student



## From the Graduate Coordinator... Dr. David Butler, Professor



I was on Developmental Leave during the Fall 2010 semester, so returning to departmental life in January has been both exciting and a bit of a whirlwind! As I write this column, Spring Break 2011 looms at the end of the week, where does the time go?? Soon after returning from Spring Break, our students will be preparing for the annual Geography Student Research Symposium, under the very able supervision of Drs. Ron Hagelman and Sven Fuhrmann. Many of our student volunteer their

time in preparing for the symposium, and dozens of our graduate and undergraduate students will be presenting the fruits of their research and honing their presentations in advance of the 2011 national Association of American Geographers meeting that will be held in mid-April, in Seattle, WA. At the AAG meeting our students will be presenting papers and posters, participating as discussants and panelists, and even chairing sessions. Our graduate students are a vital part of the AAG meeting, where people from across the country are always amazed at the level of our student participation. This year, two of our recent Ph.D. graduates, Dr. Edris Montalvo and Dr. Jose Luis Silvan-Cardenas are among the five finalists for the J. Warren Nystrom Award, our discipline's top award for research based on recently completed doctoral dissertations. Please join me in wishing Edris and Jose the best of luck in this prestigious competition! Many of our graduate students continue to publish papers in outstanding national and international outlets, and earn highly competitive grants and awards for their research. They are also excellent teachers in the classroom, and a valued part of our daily life in the department. Our graduation rates continue to be strong, with double-digit annual graduates at the master's level every year. We anticipate also graduating 6-8 Ph.D. students in the current academic year, with three already having graduated in December and several dissertation defenses recently or currently scheduled. My congratulations to all our graduates!

As another academic year winds down, I hope you will find time to come and say hello to our current and former graduate and undergraduate students at this year's annual Alumni Reunion and Student Celebration at the end of April! Our graduate and undergraduate students will receive many well-deserved awards and scholarships, and later a good time will be had by all at the evening barbeque. Come on out and celebrate the success of all our students, past and present, and say hello to your friends and professors. I'll see you there!

### Khila Dahal, Geography Doctoral Student, Paper Accepted for Publication

PhD student Khila Dahal and his advisor Dr. Ron Hagelman received acceptance of the following article for publication. This is another example of the solid scholarly work being done by our graduate students.

Dahal, K. and R. Hagelman. 2011. People's Risk Perception of Glacial Lake Outburst Flooding: A case of Tsho Rolpa Lake, Nepal. *Environmental Hazards*. Accepted for publication







**Larry Kleitches, Geography Doctoral Student, Paper Accepted**

PhD student Larry Kleitches was notified his paper has been accepted for publication. "Going to Texas: The Theme of Resurrection and Winchester '73" - is to be published in *The Journal of the American Studies Association of Texas*.



**Johanna Ostling, Geography Doctoral Student, Represents Texas State**

Johanna Ostling has been selected to represent Texas State at the Alpha Chi National Honor Society meeting in San Diego later this semester. This is an all-expense paid trip and she will be presenting results of her dissertation work at the meeting.



**David Parr, Geography Doctoral Student, Paper Accepted**

A paper authored by David Parr and Yongmei Lu was accepted for publication by *Transactions in GIS*, one of the leading journals in GIScience. The paper is titled, "The landscape of GIScience publications 1997-2007: An empirical investigation with latent semantic analysis." The leading author, David Parr is a PhD student in GIScience.



**Melanie Stine, Geography Doctoral Student, Papers Accepted for Publications**

A paper authored by Melanie Stine and David Butler was accepted in *Geomorphology*, one of the world's leading geomorphology journals with a very high impact factor: Melanie B. Stine and David R. Butler, A content analysis of biogeomorphology within geomorphology textbooks. *Geomorphology*, accepted September 6, 2010.

Ms. Stine was informed by the editor of the journal CATENA, which is an international referred journal, that her paper "Ecotone characteristics of a southern Appalachian Mountain wetland" has been fully accepted for publication. Melanie is first author on the paper, with co-author Dr. Lynn Resler of Virginia Tech (note that Dr. Resler is a PhD alum of our program). When at Texas State, Dr. Resler's dissertation advisor was David Butler, who is also Melanie's advisor.

***The Department of Geography wishes to congratulate the following individuals for the completion of their dissertation and graduated in summer/fall 2010.***

***Nancy Tian, August 2010, Ph.D. in GIScience, Advisor — Dr. F. Benjamin Zhan***

***Elaine (EJ) Hanford, December 2010, Ph.D. in Environmental, Advisor — Dr. Denise Blanchard***

***Jonathan Kedrowski, December 2010, Ph.D. in Environmental, Advisor — Dr. David Butler***

***Charles Boggess, December 2010, Ph.D. in Environmental, Advisor — Dr. Denise Blanchard***

# Upcoming Events

**Geography Student Research Symposium (TXGSRs)  
Texas State — Evans Liberal Arts  
April 1, 2011**

**Association of Geographic Educators of North Texas Conference  
(GEM)  
April 2, 2011**

**Association of American Geographers (AAG)  
Annual Meeting  
Seattle, Washington  
April 12-16, 2011**

**17th Annual Geography Alumni Reunion and Student Celebration  
Alkek Teaching Theater/Aquarena Springs  
April 30, 2011**

**Texas State Spring Commencement (Geography)  
May 13, 2011**

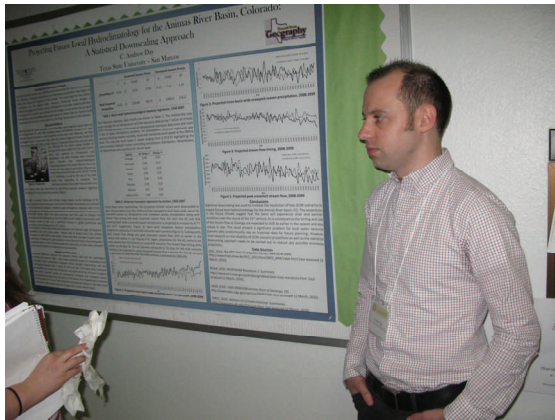
**2011 Research in Geographic Education Conference  
Lafayette, Louisiana  
May 19-21, 2011**

**National Council for Geographic Education (NCGE)  
Portland, Oregon  
August 1-7, 2011**

**Friends of Geography Conference (FOG)  
Houston, Texas  
September 24, 2011**

**Texas Council for the Social Studies (TCSS)  
Austin, Texas  
October 21-23, 2011**

## Geography Student Research Symposium, Friday, April 1, 2011



The TXGSRS is organized annually by the TXGSRS Committee and the Department of Geography to enable Texas State University students, students from surrounding colleges and universities, and other area geography research and education groups to meet, interact, and collaborate in a research conference setting.

Graduate students presenting research at the annual Association of American Geographers (AAG) meeting will use the event to practice their papers and posters and gain valuable input from department faculty and student-colleagues before attending the AAG meeting.

Texas State undergraduate students and all students from local colleges and universities are invited to attend and/or present results from individual or group research projects. Topical panel discussions are organized by the Department of Ge-

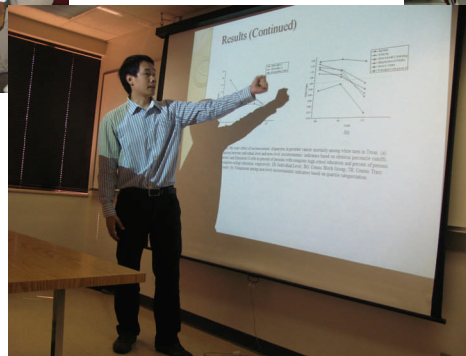
ography Graduate Student Forum and our keynote speaker will round out the conference.

The conference is free to all participants and attendees, and lunch is provided by the Department of Geography.

### For More Information and

#### Registration:

<http://www.geo.txstate.edu/>



***Don't forget to register and attend the 17th Annual Alumni Reunion and Student Celebration! This year's event will be held on Saturday, April 30, 2011, at the Alkek Teaching Theatre and Aquarena Center. The registration form can be found on the last page of this newsletter, as well as on the Geography Department website -***

***<http://www.geo.txstate.edu/alumni/reunion.html>.***



## Dr. Butler spends Seven Weeks of His Developmental Leave in Europe

Dr. David Butler, on developmental leave during the Fall 2010 semester, spent 7 weeks in Europe during September and October. The first 2 1/2 weeks were spent in France, primarily in Brest at the tip of Brittany, where his wife Dr. Janet Butler of Texas State's Department of Accounting (also on developmental leave) was collaborating with a colleague at the school ESC Brest Bretagne. Dr. Butler spent this period writing and editing manuscripts for two book projects.

The last week of September was spent in Scotland, where Dr. Butler spent 5 days at the Global Change and the World's Mountains Conference in Perth; and two days in Edinburgh, the capital of Scotland. He then spent two weeks collaborating with Dr. Markus Stoffel of the Laboratory of Dendrogeomorphology at the University of Bern, Switzerland (see photo), where he learned about traumatic resin ducts and the process of making microsections of tree-ring crosscuts for microscope analysis.

The final ten days were spent in Paris (see photo), where the Drs. Butler were completely unencumbered by the presence of French protesters. They rode the Paris Metro every day and took regional trains to outlying destinations without any disruptions from the strikes reported in the American and world media.

The Butlers returned to San Marcos on October 26th, and will spend the remainder of their developmental leaves writing and pondering life's deep mysteries. And trying to find good croissants!



Dr. Butler examines a micro-cut prepared for microscope analysis in the Laboratory of Dendrogeomorphology in Bern, Switzerland, with Dr. Markus Stoffel and doctoral student Ms. Estelle Arbella of the University of Bern.

Sunset over Paris as viewed from the Summit level of the Eiffel Tower. The shadow of the Eiffel Tower falls across the Seine River near center. Across the Seine toward the right is the world-famous Louvre Museum.




---

### **AAG's Enhancing Departments and Graduate Education (EDGE) Program invites Blanchard and Carter to contribute to planned book on careers.**

Denise Blanchard and Mark Carter have been invited by the AAG to co-author a chapter on making the most of internships for the planned book, entitled *Practicing Geography: Careers for Enhancing Society and the Environment*. In recent years the discipline of geography has developed a broad and deep foundation of support for aspiring academics in the U.S. through the work of EDGE, the Geography Faculty Development Alliance, the Healthy Departments Initiative, and many other projects led by the AAG and geographers. *Practicing Geography* is being developed to improve the preparation of geography professionals and the effectiveness of career advising with regard to employment opportunities in BGN organizations, an issue that has received considerable and growing attention as graduate programs in many disciplines begin to respond to calls for improving the capacity of the scientific workforce. For more information on EDGE and *Practicing Geography* visit the AAG website at [www. http://www.aag.org](http://www.aag.org)

Texas State University-San Marcos  
 Department of Geography  
 17<sup>th</sup> Annual Alumni Reunion & Student Celebration  
 Saturday, April 30, 2011 at the Alkek Teaching Theatre and Aquarena Center  
 Registration Form

<b>Name(s) of Registrant(s):</b>			
<b>Address:</b>			
<b>Phone:</b>		<b>E-Mail:</b>	

Award Recipients, Scholarship Recipients, and Volunteers:  
**Registration fee is waived if registered by April 22, 2011**

Number of:    Award Recipients            \_\_\_  
                   Scholarship Recipients        \_\_\_  
                   Volunteers                                \_\_\_



Students, Alumni, Faculty, Staff, and Friends of Geography:

Pre-Registration thru April 22, 2011    \$10.00 (per adult)  
 April 23, 2011 thru April 30, 2011    \$15.00 (including at the door)

Number of:    Students                                    \_\_\_  
                   Alumni                                        \_\_\_  
                   Faculty                                      \_\_\_  
                   Staff                                         \_\_\_  
                   Friends of Geography                \_\_\_  
                   Children Under 12                    \_\_\_ (NO REGISTRATION FEE)

**TOTAL NUMBER OF PEOPLE REGISTERED:**                    \_\_\_  
**TOTAL NUMBER OF PEOPLE ATTENDING B-B-Q DINNER:**        \_\_\_

Are you interested in the free Glass Bottom Boat Rides from 2:00 – 4:00 p.m.?    Yes    No

\*\*\*\*\*  
 Method of payment: Cash    Check    # \_\_\_ (Please make checks payable to Dept. of Geography)  
 Credit Card: Mastercard or Visa    Expiration Date: \_\_\_  
 Credit Card Number: \_\_\_  
 Total amount included with this registration form: \$ \_\_\_

\*\*\*\*\*  
 Registration includes admission to all activities, a souvenir program, and B-B-Q dinner with all of the fixings!  
 Return this form to:

Alumni Reunion and Student Celebration  
 Attn.: Patricia Hell-Jones  
 Department of Geography  
 Texas State University – San Marcos  
 San Marcos, TX 78666  
 Phone: (512) 245-2170 FAX: (512) 245-8353 E-mail: [ph19@txstate.edu](mailto:ph19@txstate.edu)  
 Visit our website: <http://www.geo.txstate.edu>