

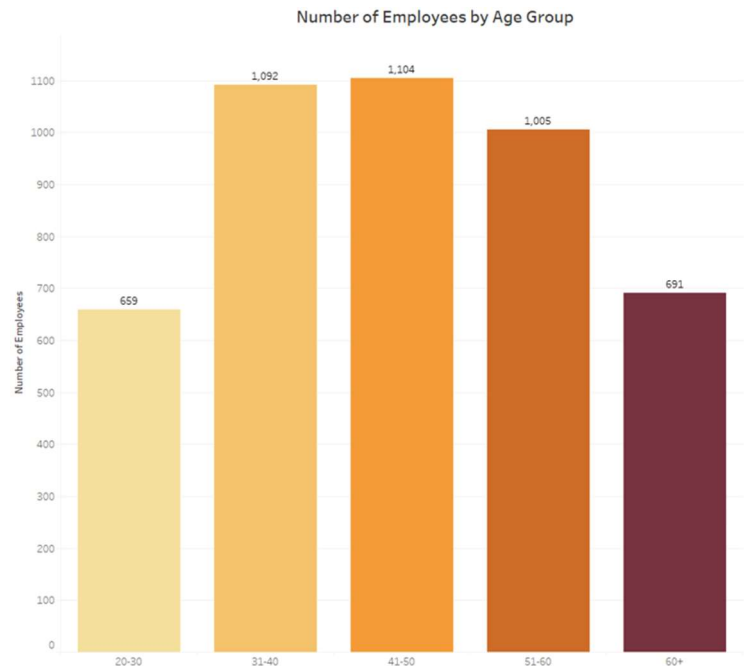
# DATA DIGEST

Office of Data, Analytics, & Institutional Research

October 2024

## Discover the Latest Data Points: Exploring the Age Diversity of Our Workforce

At Texas State University, we are proud to have a diverse workforce spanning across different age groups, each bringing unique perspectives and experiences to the table. According to our recent employee data, the largest group of our staff falls within the 41-50 age range, totaling 1,104 employees. Closely following are employees aged 31-40 and 51-60, with 1,092 and 1,005 individuals, respectively. Our commitment to a dynamic work environment is further reflected in the strong representation of both younger employees, with 659 staff members aged 20-30, and those with a wealth of experience, as 691 employees are over 60 years old. This balance of youthful energy and seasoned expertise enriches our community, helping us grow and innovate while upholding our traditions.



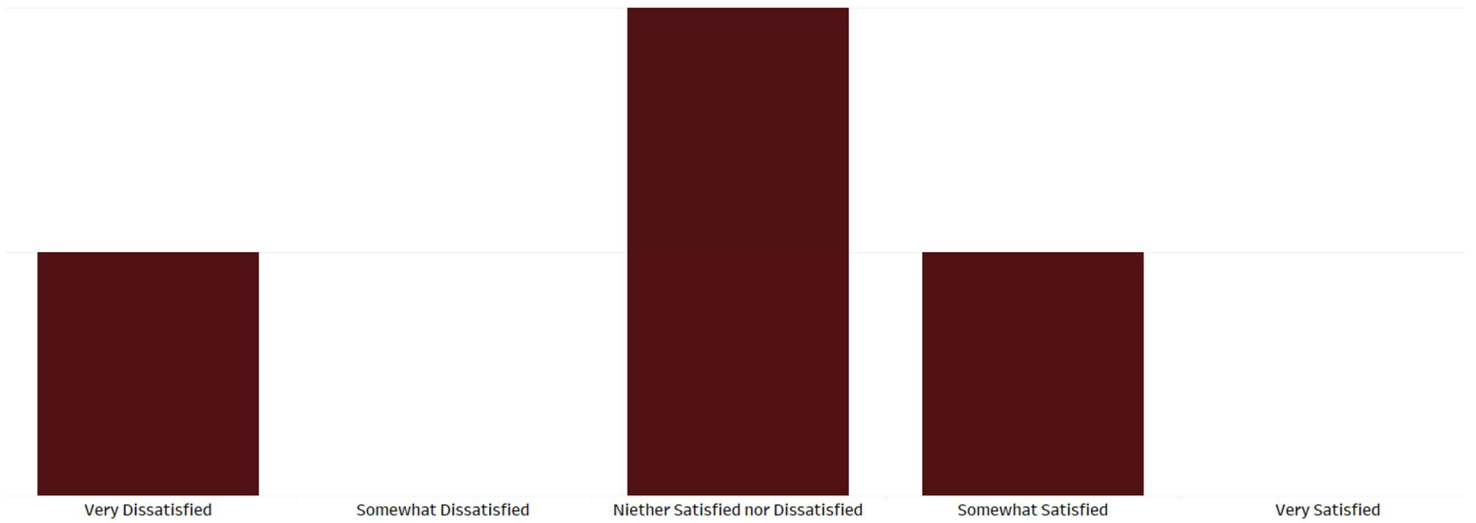


## Shape the Data: Take the Poll

October Poll: What is the biggest barrier to effective data utilization in your work?

### August Poll Results

How satisfied are you with the current data analytic resources available to you?





## Student-Faculty Ratio

The Student-Faculty Ratio is calculated by dividing the Full-Time Equivalent (FTE) students by the FTE instructional staff at the same level. This ratio excludes students and faculty involved in 'stand-alone' graduate or professional programs, such as medicine, law, or veterinary programs, where faculty primarily teach graduate-level students. The FTE value is determined by counting full-time students or staff plus one-third of the part-time students or staff.

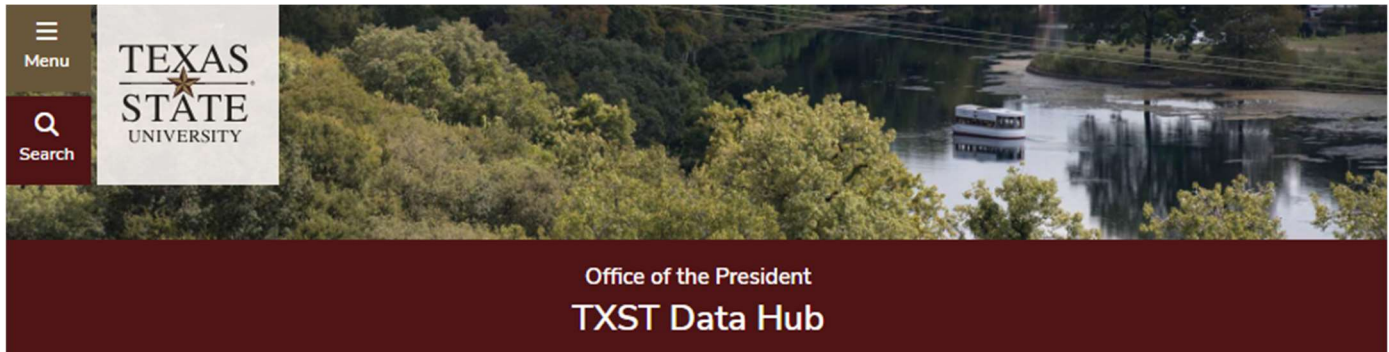
### The ABCs of Data:

This segment of our newsletter explains important terms used in data analytics. We will explore the definition and significance of the following term:

This is the University's definition, derived from both IPEDS and THECB.

---

## TXST Data Hub



The [TXST Data Hub](#) is designed to be your go-to resource for all things data governance, management, and access. Here, you will find essential tools and information to navigate the data landscape. Explore a variety of data resources, from data literacy trainings and a data glossary to reporting data quality issues. You can also discover the tools that empower you to access and visualize data – all designed to support informed decision-making and foster a data-driven culture.

---

## 2024 SAIR Conference

Members of the Data, Analytics, and Institutional Research team recently attended the 2024 Southern Association for Institutional Research (SAIR) conference in Atlanta. The event provided an excellent opportunity for our team to explore the latest trends and best practices in institutional research. In addition to learning from the presentations, the conference allowed us to connect with colleagues from other institutions, fostering valuable conversations and idea-sharing.

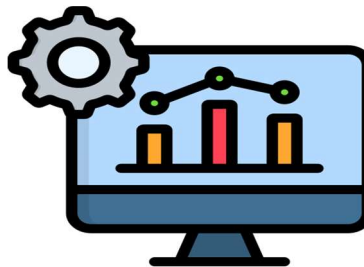
We are also proud to recognize Marc Turner, who completed his term as a SAIR Board Member at Large during the event. His involvement with the organization has been greatly appreciated. Overall, the SAIR conference was a highly enriching experience for our team, and we returned with new insights that we are eager to apply in our work to better support the university's mission.

## D.A.I.R took on Atlanta



---

## Data Discovery: Finding the Tools You Need



Attention! Attention! Data, Analytics, & Institutional Research welcomes you to sign-up for our Data Literacy Training.

Looking for data? In this session, you'll learn where to start when searching for data, explore the university's key dashboards and reports, and gain hands-on experience navigating the Data Hub and its resources. You'll also uncover essential data tools, from internal reports on enrollment to websites that enable comparisons between

---

our institution and others nationwide. This workshop is ideal for anyone looking to begin making informed, data-driven decisions.

## SIGN-UP

---

### University Data



Access our public dashboards to view current and historical data.

### TXST Data Hub



Designed to be your go-to resource for all things data governance, management, and access.

### CatStats



Faculty and staff access detailed internal dashboards via CatStats.

### Data Request Center



Learn about the different avenues for requesting data or gaining access to specialized institutional reports.

---

Please send us your questions or feedback to [ir@txstate.edu](mailto:ir@txstate.edu).



*Go Green! Print this email only when necessary. Thank you for helping Texas State be environmentally responsible. This message was sent to all members of a conscribed mailing list established and maintained by the Office of Institutional Research at Texas State University.*

*If you no longer wish to receive this newsletter, please [unsubscribe](#).*