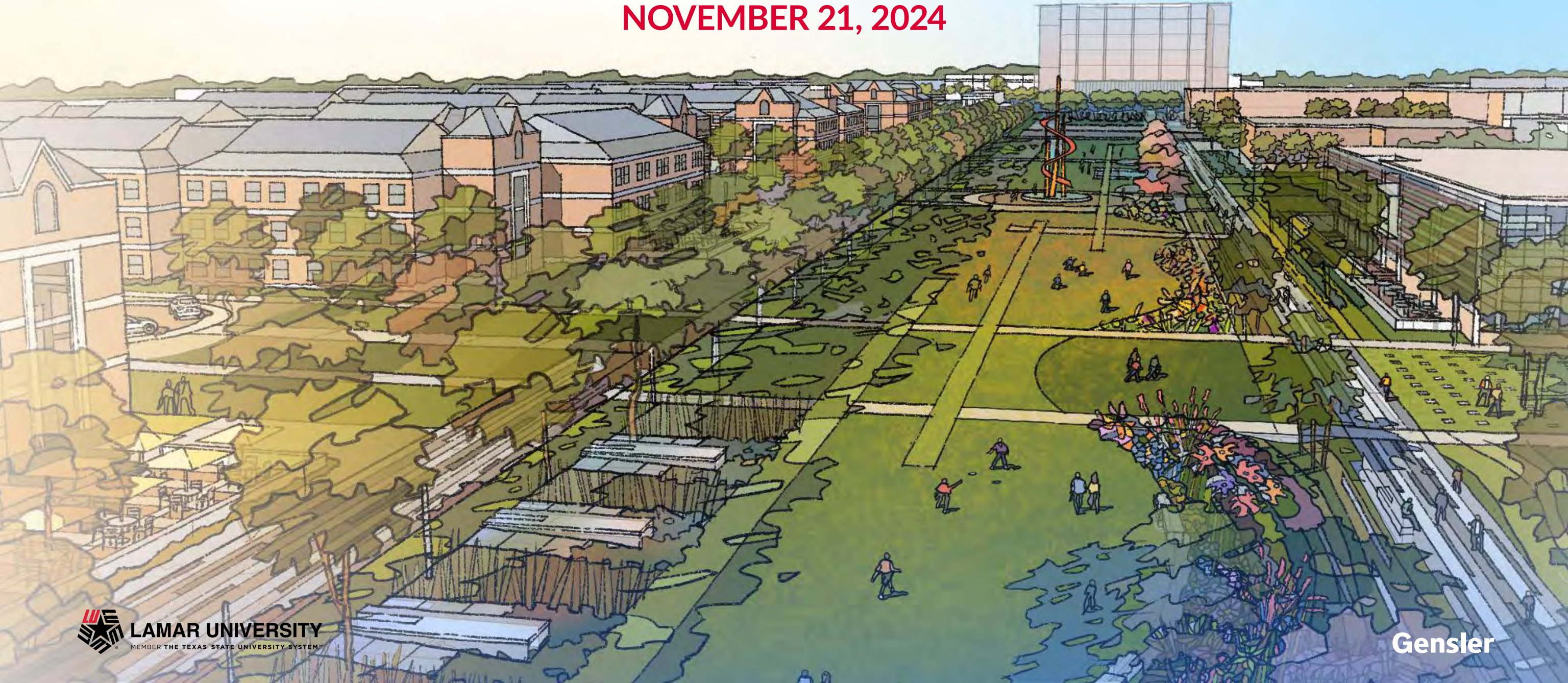


# LAMAR UNIVERSITY CAMPUS MASTER PLAN

## BOARD OF REGENTS PRESENTATION

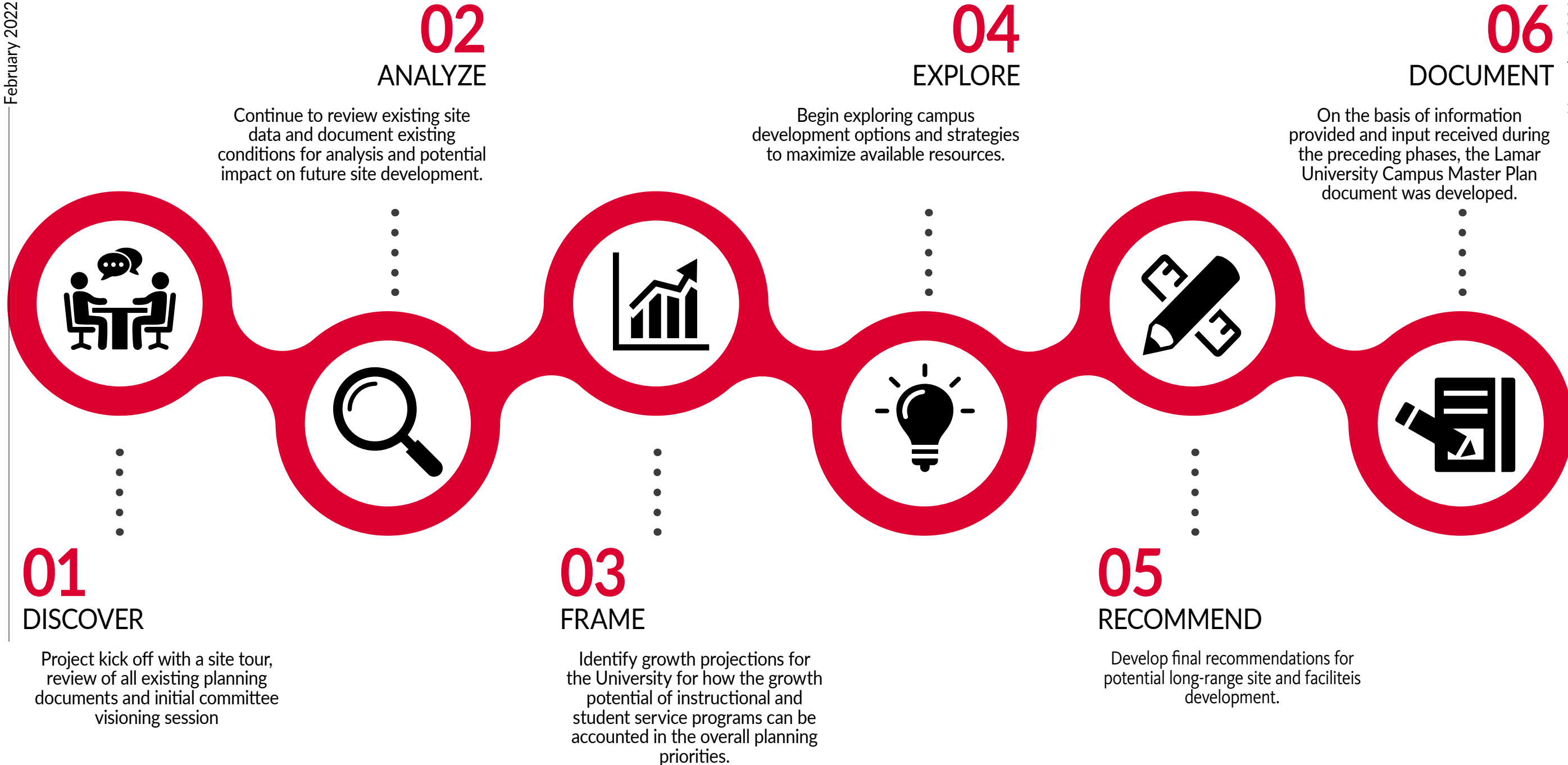
NOVEMBER 21, 2024



# TIMELINE

February 2022

November 2024



## 01 DISCOVER

Project kick off with a site tour, review of all existing planning documents and initial committee visioning session

## 02 ANALYZE

Continue to review existing site data and document existing conditions for analysis and potential impact on future site development.

## 03 FRAME

Identify growth projections for the University for how the growth potential of instructional and student service programs can be accounted in the overall planning priorities.

## 04 EXPLORE

Begin exploring campus development options and strategies to maximize available resources.

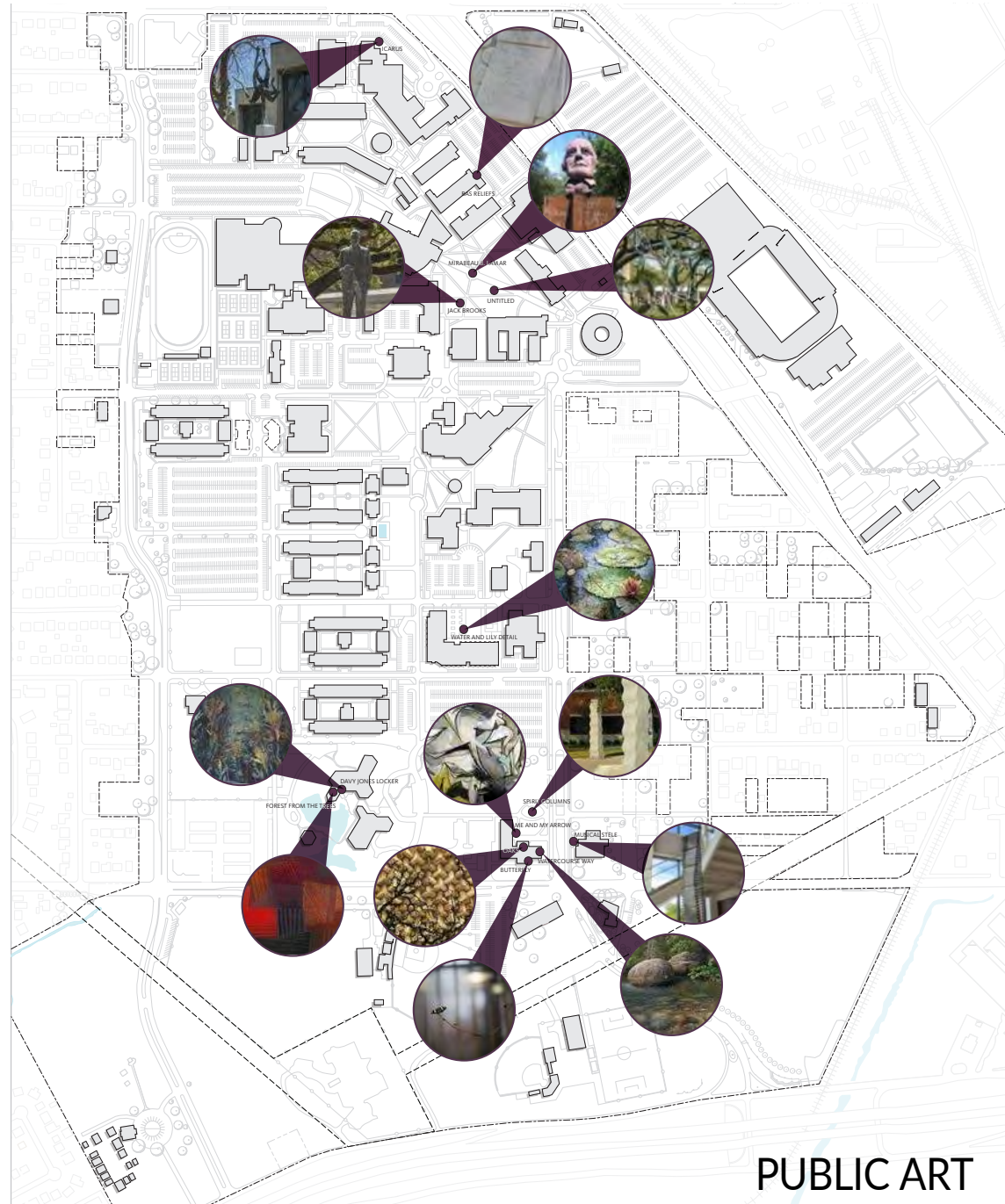
## 05 RECOMMEND

Develop final recommendations for potential long-range site and facilities development.

## 06 DOCUMENT

On the basis of information provided and input received during the preceding phases, the Lamar University Campus Master Plan document was developed.

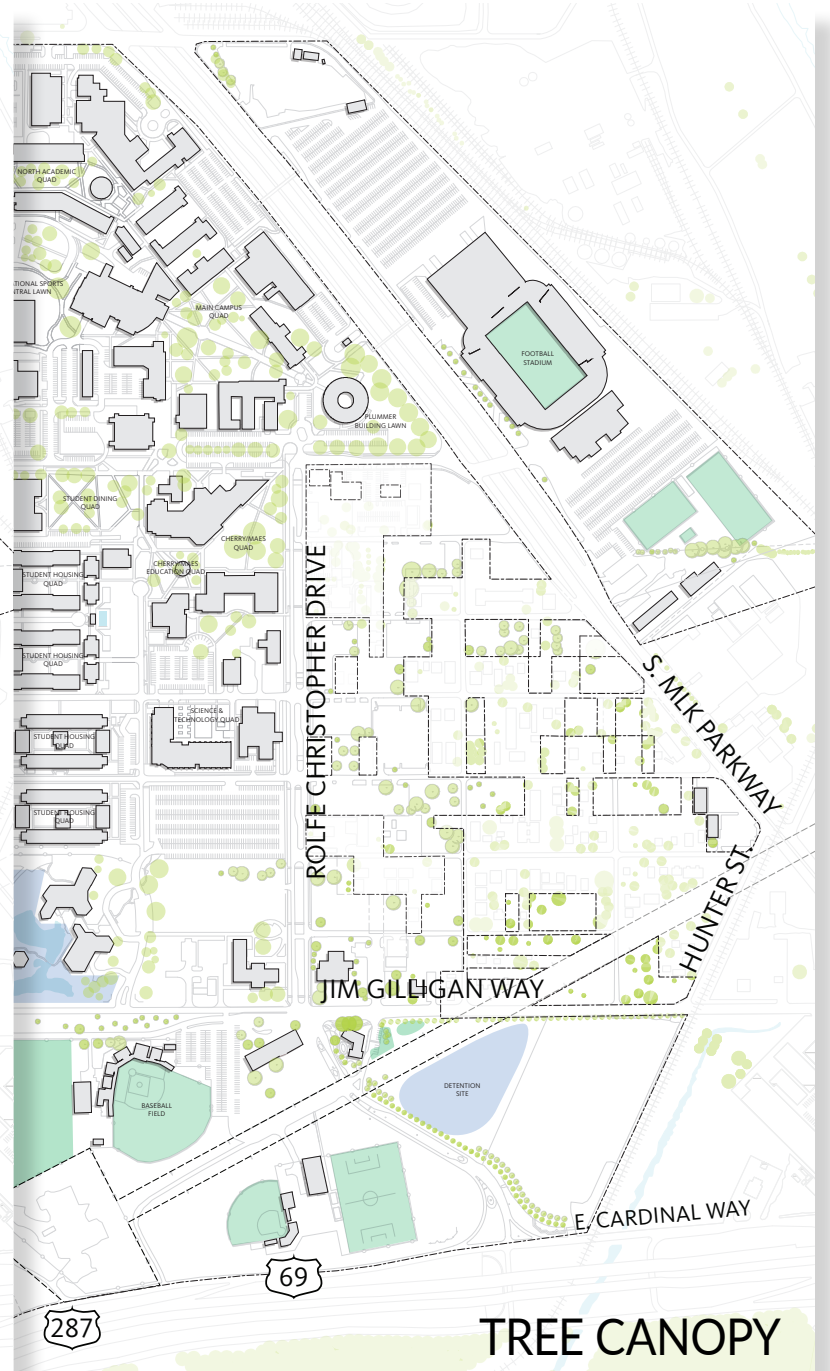
# EXISTING CONDITIONS



PUBLIC ART

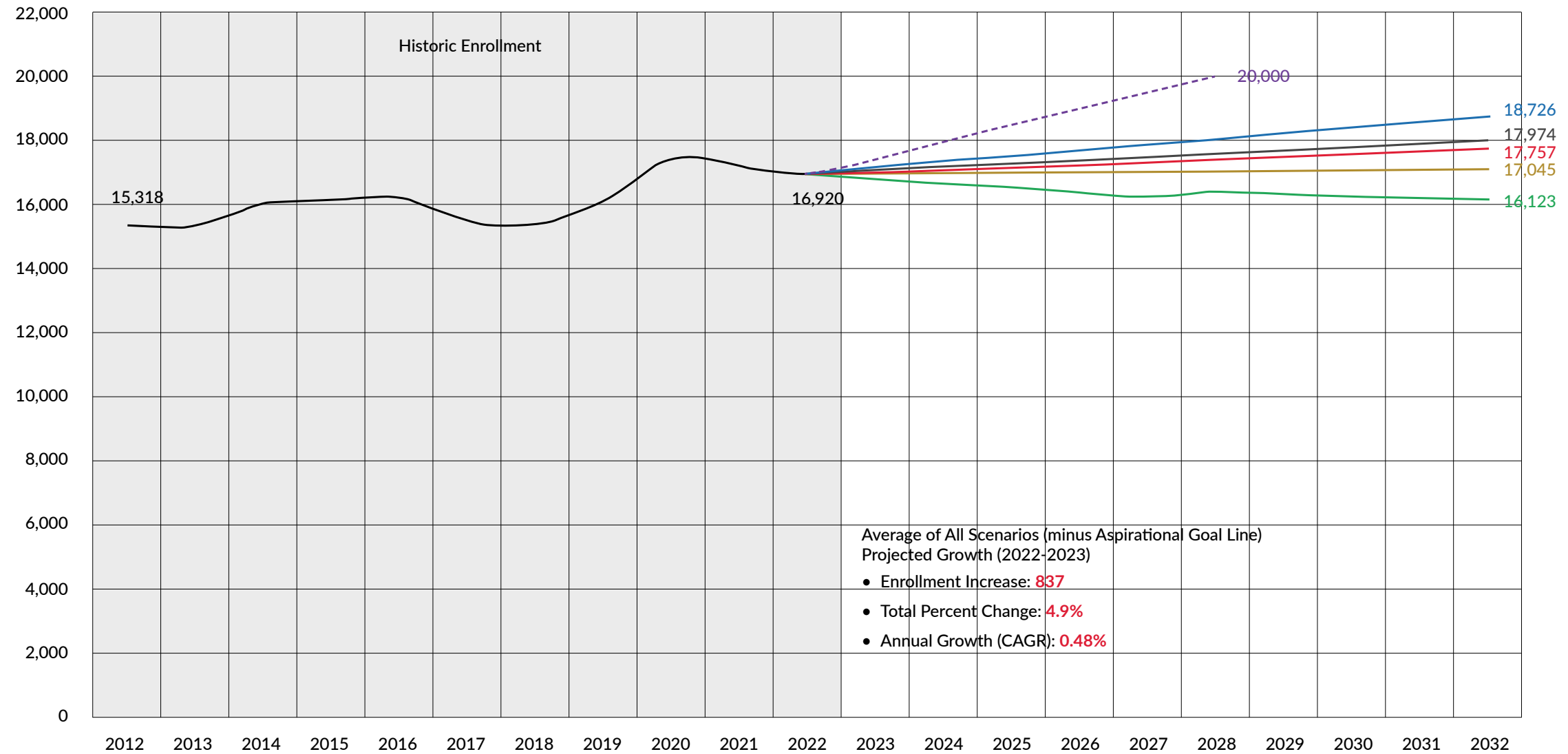


PARKING UTILIZATION



TREE CANOPY

# GROWTH PROFILE

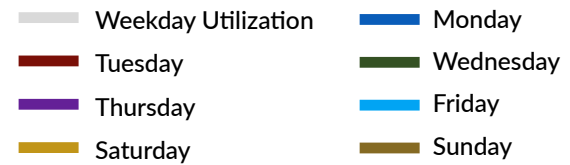
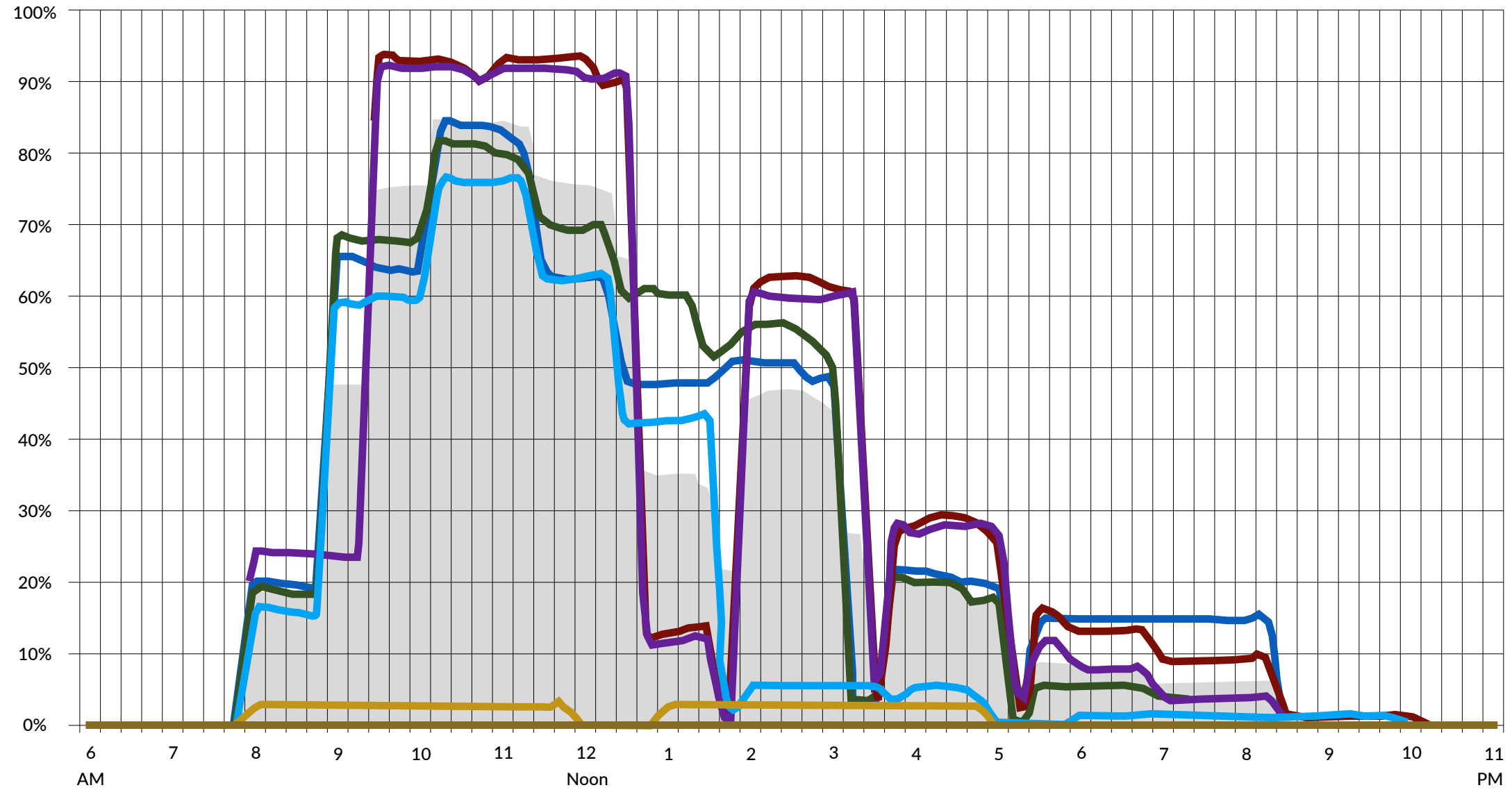


Average of All Scenarios (minus Aspirational Goal Line)  
 Projected Growth (2022-2023)

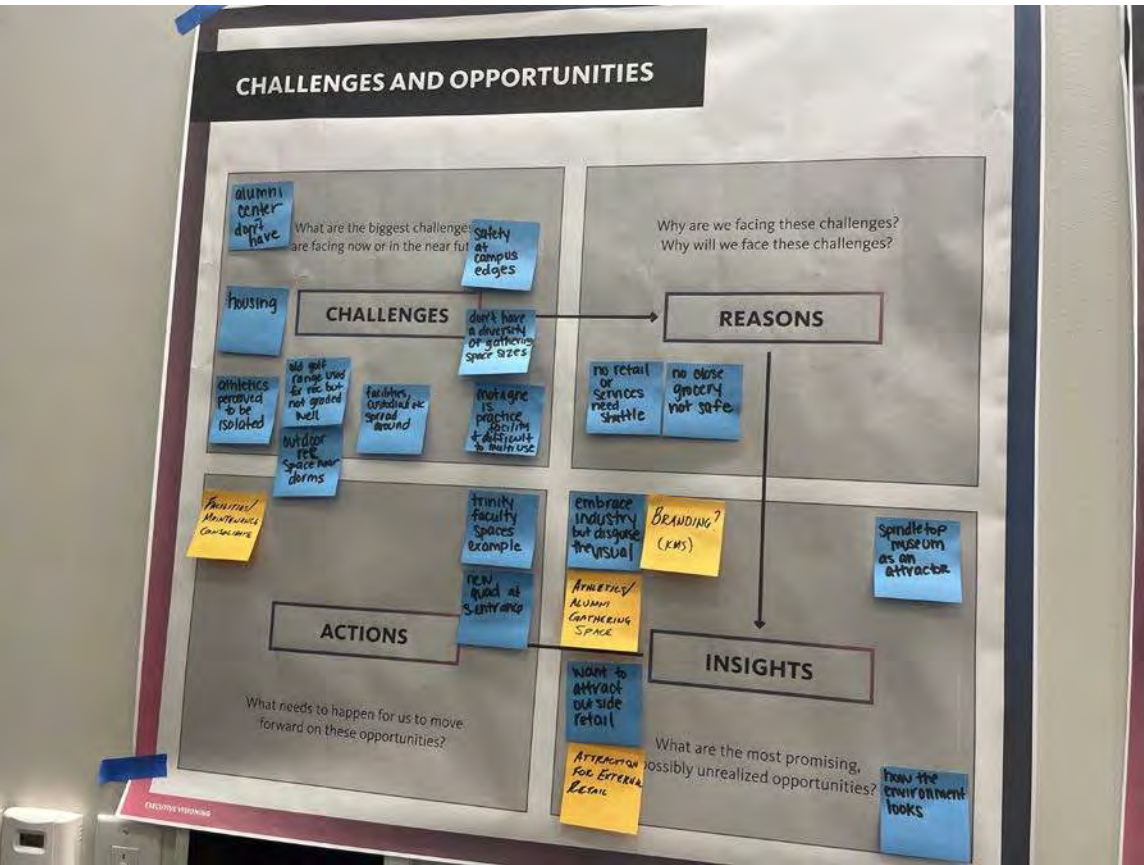
- Enrollment Increase: **837**
- Total Percent Change: **4.9%**
- Annual Growth (CAGR): **0.48%**

- Sum of All 2012-2022 Trend Lines
- Sum of All 2022 Capture Rates (DMA Growth)
- Sum of All 2022 F Blended Catchment Areas
- Sum of All Dominant High Schools of Origin 2016-2021 Annual Growth Rate Lines
- Sum of All Average Scenarios (minus Aspirational Goal line)
- - - University Strategic Plan (Aspirational Goal)

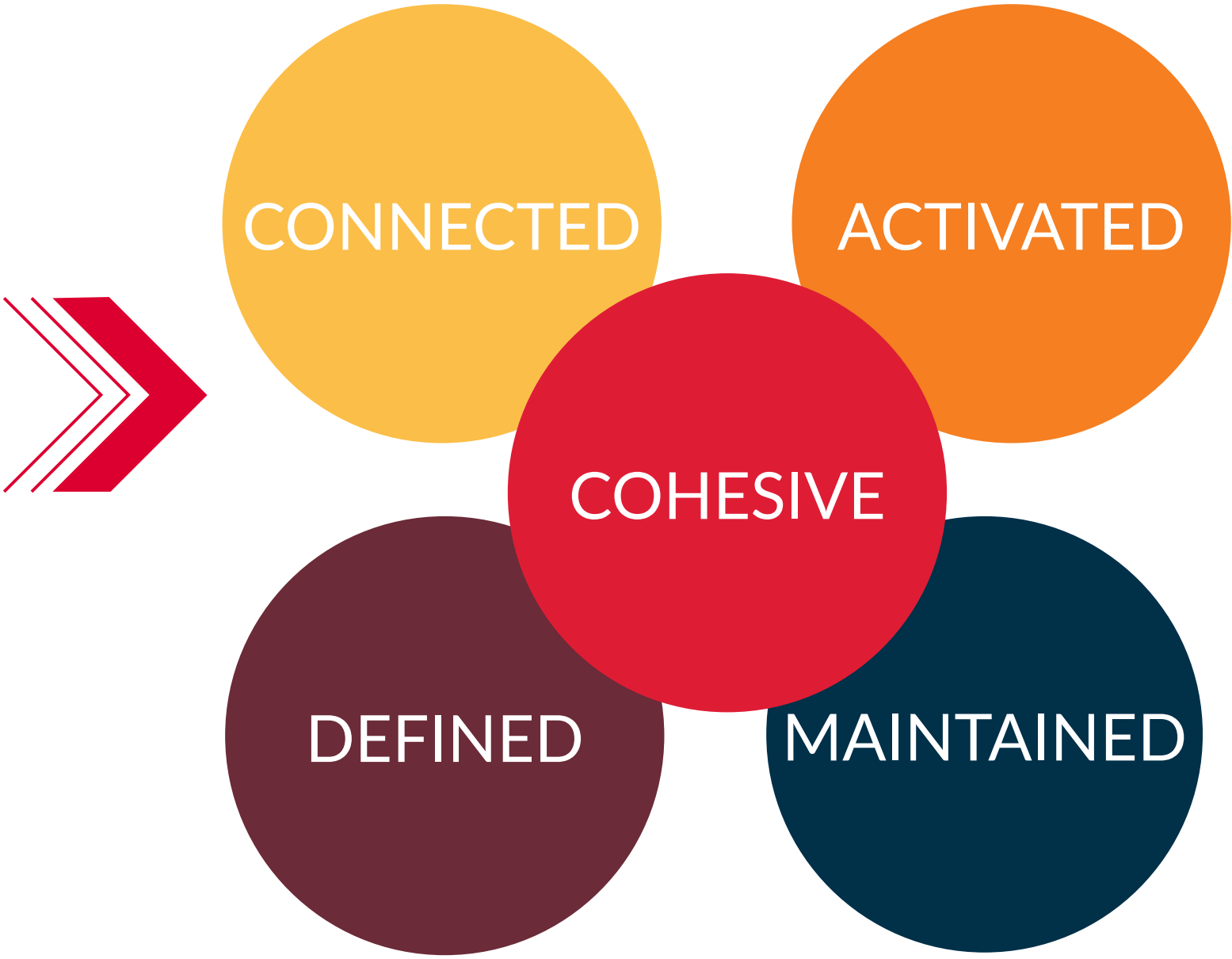
# CLASSROOM UTILIZATION



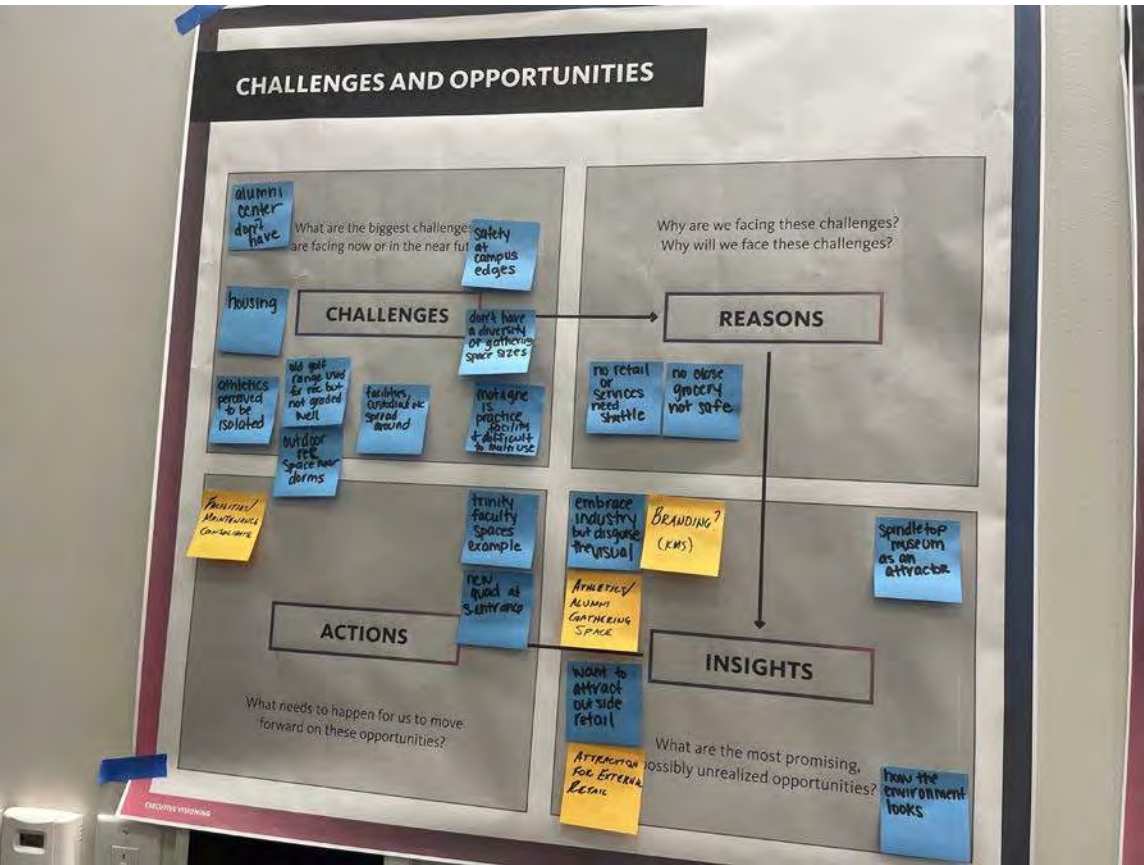
# CAMPUS ENGAGEMENT



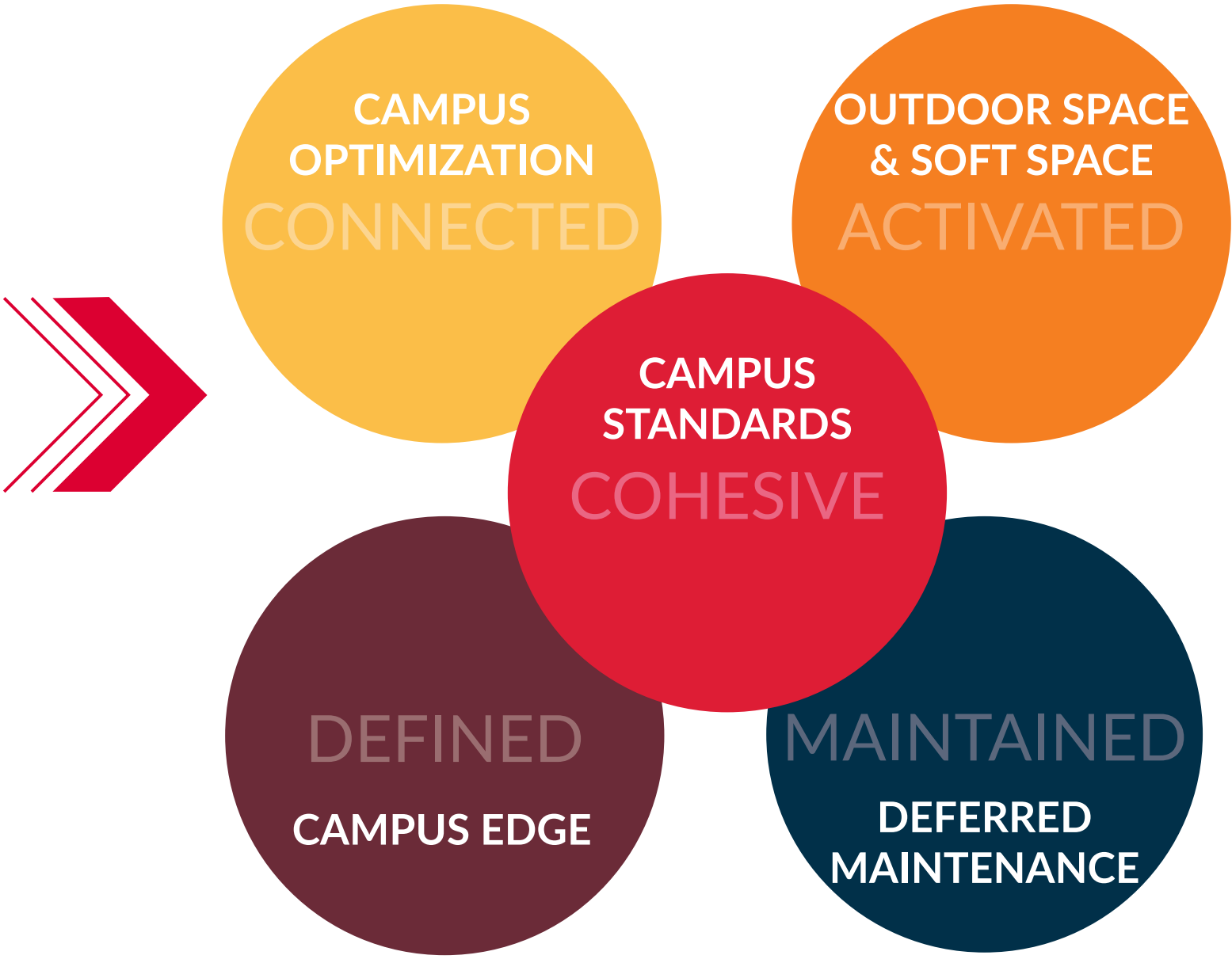
# GUIDING PRINCIPLES



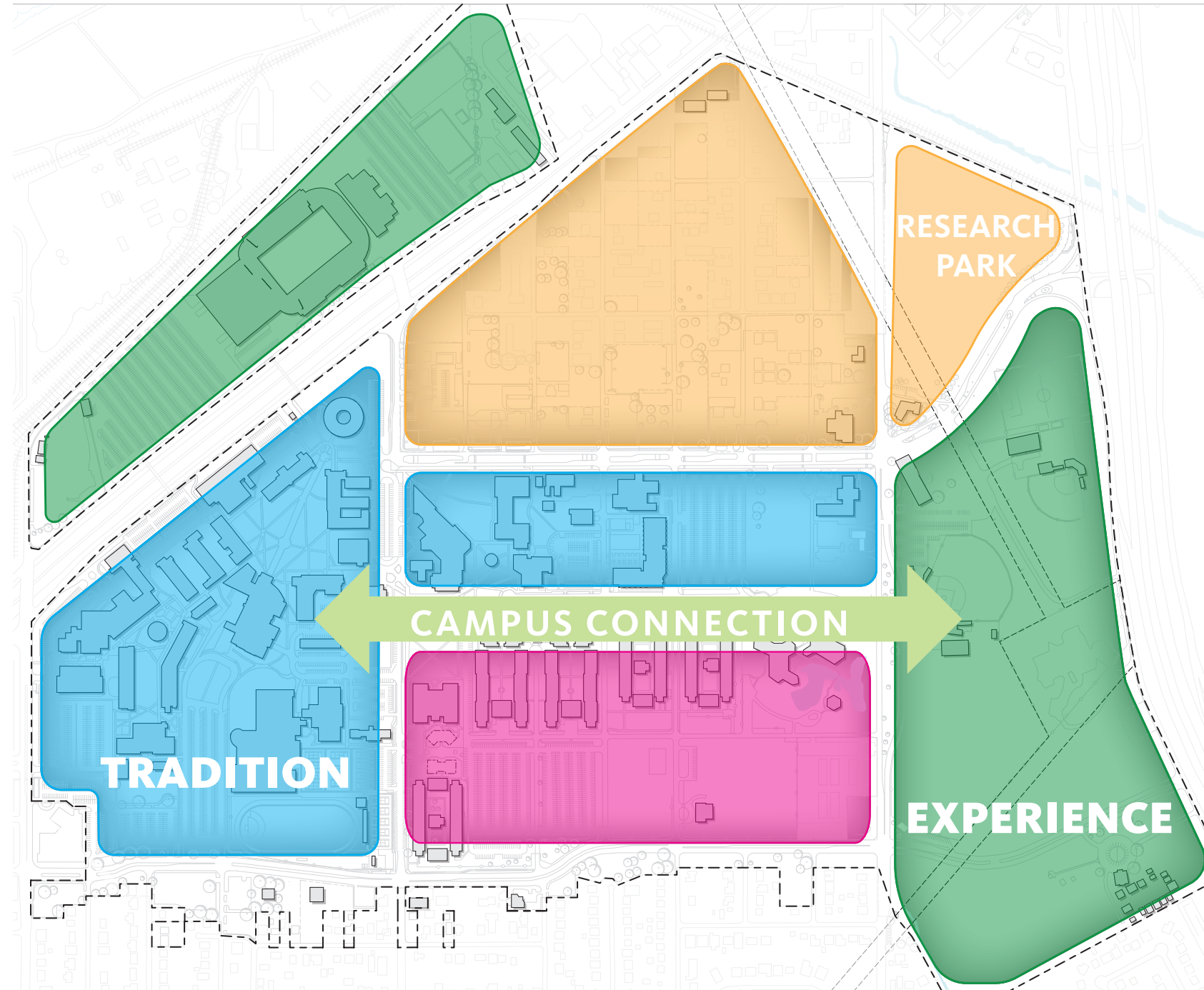
# CAMPUS ENGAGEMENT



# GUIDING PRINCIPLES



# LONG RANGE VISION

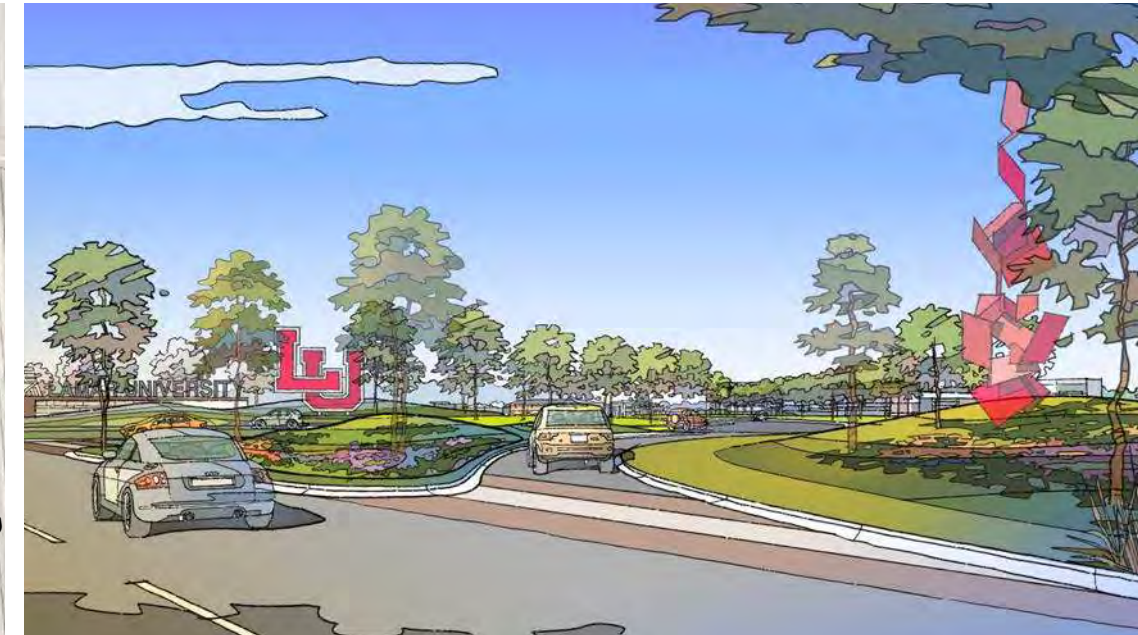
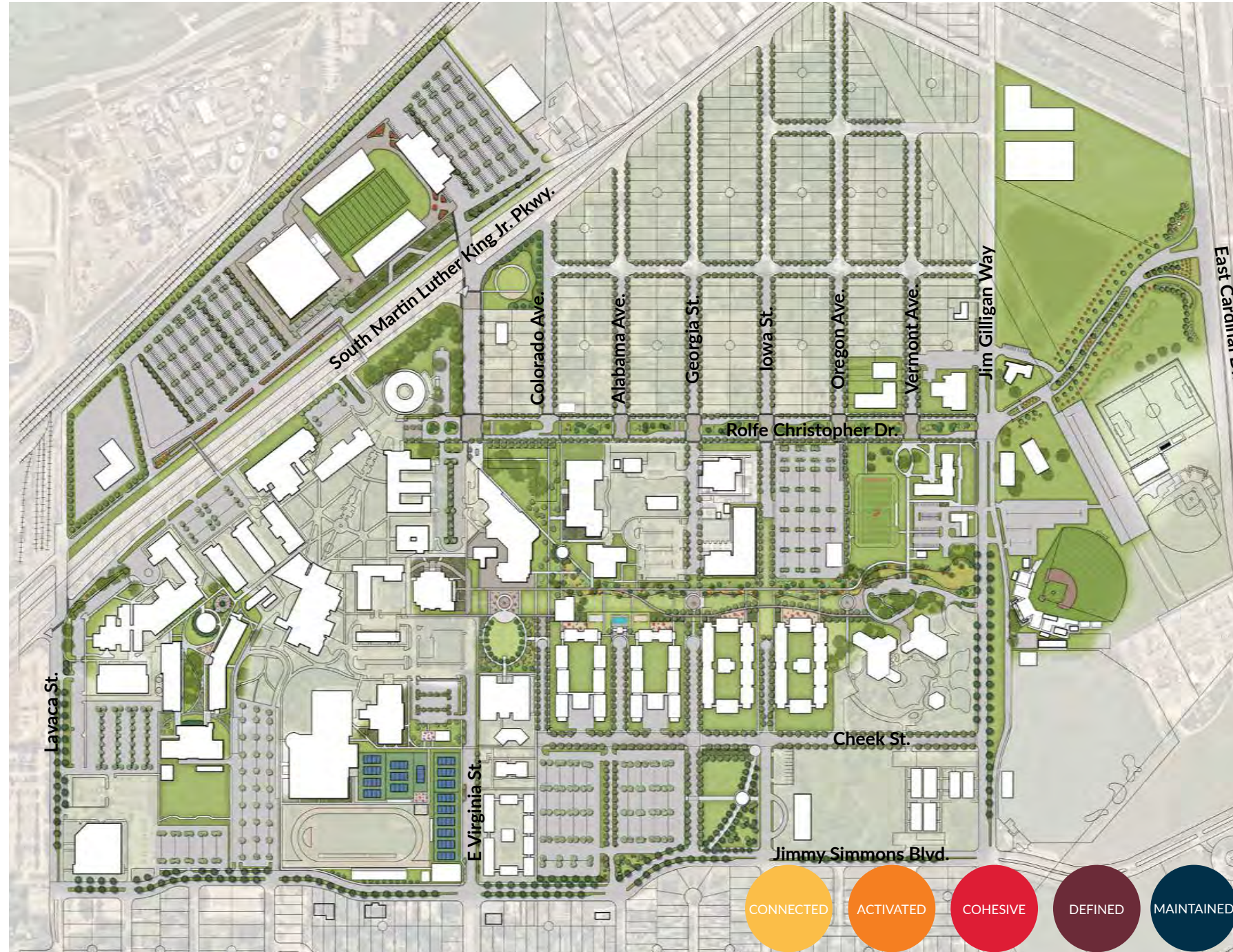


- Live Zone
- Study Zone
- Experience Zone
- Collaborate Zone





# CAMPUS MASTER PLAN: PROPOSED PLAN



# ON-GOING EFFORTS

Projects currently underway:

- 1 Renovations to the Mary and John Gray Library
- 2 Upgrades to the Chemistry Building Facade
- 3 Renovation of the large tiered classroom in Cherry Engineering Building
- 4 Upgrades to Residence Halls
- 5 New Intramural Field

Ongoing renovations and upgrades to existing academic facilities will take place over the next ten years.

Improvements and upgrades to the residence halls have begun and will continue over the next ten years.



# SHORT-TERM PHASE

The following projects should begin within the next four years:

## New Facilities

- 1 Facilities Building
- 2 New Baseball Clubhouse/Locker Room
- 3 New Golf Practice Facility
- 4 Central Storage Building
- 5 New Music Annex
- 6 Engineering Annex

## Open Space & Landscape

- 7 Rolfe Christopher Entryway Improvements
- 8 Ecological Ribbon
- 9 Brook-Shivers Dining Hall Lawn

## Wayfinding & Signage

- 10 Cardinal Drive Entry Signage
- 11 Cardinal Drive Vertical Monument/Branding

## Transportation & Parking

- 12 Parking Lot Enhancements

## Safety & Security

- 13 Rolfe Christopher Drive Enhanced Lighting
- 14 Enhanced South Martin Luther King Jr. Parkway Pedestrian Crossings



# MID-TERM PHASE

The following projects should begin in five to seven years:

## Open Space & Landscape

- 1 Cardinal Park
- 2 Tailgate Park
- 3 Science Quad Improvements

## Wayfinding & Signage

- 4 Lavaca Street Vertical Monument
- 5 Umphrey Stadium Monument/Photo Op
- 6 Rolfe Christopher Tailgate Entry Monument

## Transportation & Parking

- 7 Parking Lot Enhancements

## Safety & Security

- 8 Rolfe Christopher Drive Enhanced Lighting
- 9 Rolfe Christopher Drive Intersection Enhancements



# LONG-TERM PHASE

The following projects should begin in eight or more years:

## New Facilities

- 1 Tennis Courts
- 2 Future Proposed Alumni Center
- 3 Future Proposed Innovation Research Park
- 4 Future Proposed Honors Residence Hall
- 5 Future Proposed Athletic Training Facility

## Open Space & Landscape

- 6 Rolfe Christopher Median Enhancements\*
- 7 Plummer Building Drop-Off Enhancements
- 8 South Martin Luther King Jr. Parkway Improvements
- 9 Back of House Screening

## Wayfinding & Signage

- 10 Ecological Ribbon Vertical Monuments
- 11 Tailgate Plaza with Art Monument

## Transportation & Parking

- 12 Game Day Parking Improvements

\* Before enhancement project of Rolfe Christopher happens, route new thermal utilities for the Future Honors Residence Hall from the South Central Plant.



# DEVELOPMENT GUIDELINES

## Architectural Guidelines

- Massing
- Materials
- Fenestration



## Wayfinding Guidelines

- Cohesive Sign Family
- Signage Legibility
- User-experience Driven Sign Placement



## Landscape Guidelines

- Paving Materials
- Site Furnishings
- Plant Materials



## Technology Infrastructure Guidelines

- OPS Service
  - Tie-ins
- Cabling Rerouting
- OFOI Network Equipment



