

Fall 2025
Texas State Orchestra Auditions
Bass

The TXST Symphony Orchestra utilizes several variations of rotation seating. All decisions regarding seating and part assignments are made ultimately by the director of orchestral studies, Dr. Harrison. Certain principal players may remain constant throughout the semester/year. String players may rotate from concert to concert. In general, the string sections are based on the fall auditions (held in conjunction with the string faculty).

Required audition materials, prepare all as marked and listed below. You are strongly encouraged to listen to the linked recordings provided in the list below (highlighted in blue) so that you understand tempi and style of each excerpt.

1. 3-octave scale of your choice with tonic arpeggios (major and minor)
2. Solo of your choice (about 2 minutes), accompaniment not required
3. **Psathas** - Omnifenix (2 excerpts)
[Listen to this excerpt](#)
4. **Beethoven** - Symphony no. 5 mvt II (1 excerpts)
[Listen to this excerpt](#)
5. **Beethoven** - Symphony no. 5 mvt III (3 excerpts)
[Listen to these excerpts](#)
6. Sight reading provided at the audition

OMNIFENIX DOUBLE BASS

John Psathas

PROMETHEAN EDITIONS
HIRE LIBRARY

Duplication of this original
material is **ILLEGAL**

$\text{♩} = 155$
pizz.



6



11



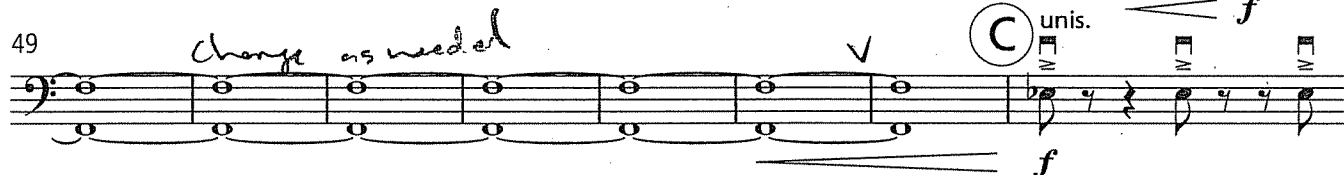
16



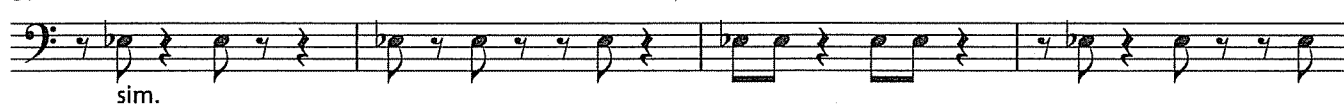
22



49



57



61



65



69



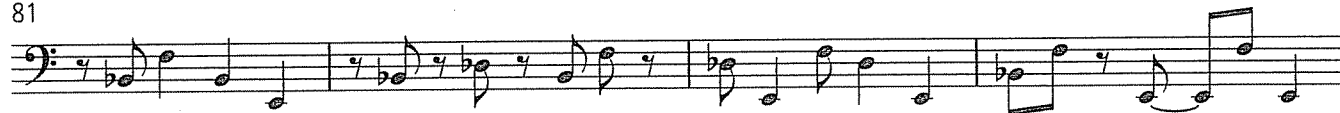
73



77



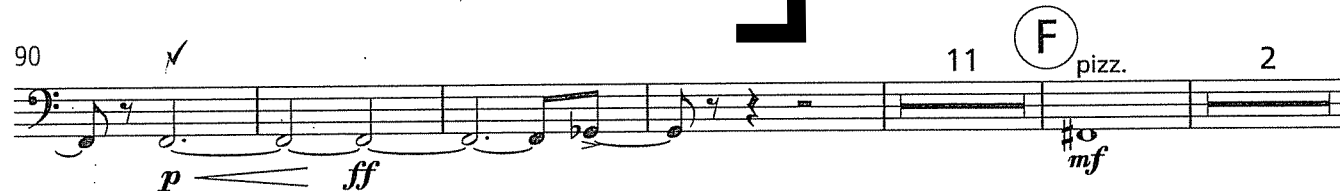
81



85



90



108



114



119



123



128



133

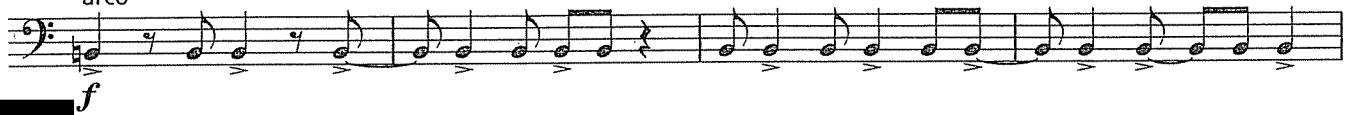


138



Psathas - Omnifenix
Bass - prepare as marked

149 **J**
arco



153



157



161



165 **K**



169



173



177 **L**



182



190 **M** 8 **N** Vn.II



210



222



78 **B** arco
ff *sf* *sf*

87 **6** Viol. I pizz. *f* *p*

105 arco *pp* *pp* *f*

116

120 1-8 2 3 4 5 *sempre pp*

129 6 7 8 9 Fl. I *f* *p*

147 **D** *ff* *dimin.* *pizz.* *p*

159 **5**

174 **E** **3** arco *cresc.* *f* *pp* *cresc.*

184 *ff*

191 *sf* **4**

più moto

200 *p* 1-8 2 3 4 *pp*

209 5 6 7 8 *f* *f*

Tempo I

217 *cresc. ff* 3 *Viol. I* *cresc. f sf f sf* *p* *pp*

230 *cresc.* *f* 3

240 *ff* *ff* *p* *ff*

Beethoven - Symphony no. 5
mvt III - as marked

Allegro **poco ritardando a tempo**

13 *pp* *sf* *un poco ritard. a tempo* 1 *f*

25

38 *sf* *sf* *sf* *sf* *dimin. pp*

poco ritard. a tempo

51 *pp*

63 *cresc.* *f*

74

89 *sf* *sf* *sf* *sf* *dimin. pp* **A**

101 **3** pizz. **3** **14** Vc. arco *cresc. - - - f*

131 *ff* *p* **f**

141

150

159 **1** **2.** *f*

166

175 1-6 2 3 4

186 5 6

195 **B** *f* *dimin.* *p*

203 *sempre più piano*

211 **8**