



Design Overview

Our project will demonstrate a horizontal model that mimics the functionality of an elevator. This project will be coded using PLC(Programmable Logic Control) with OpenPLC which consists of floor selection, door operation, & user interface.

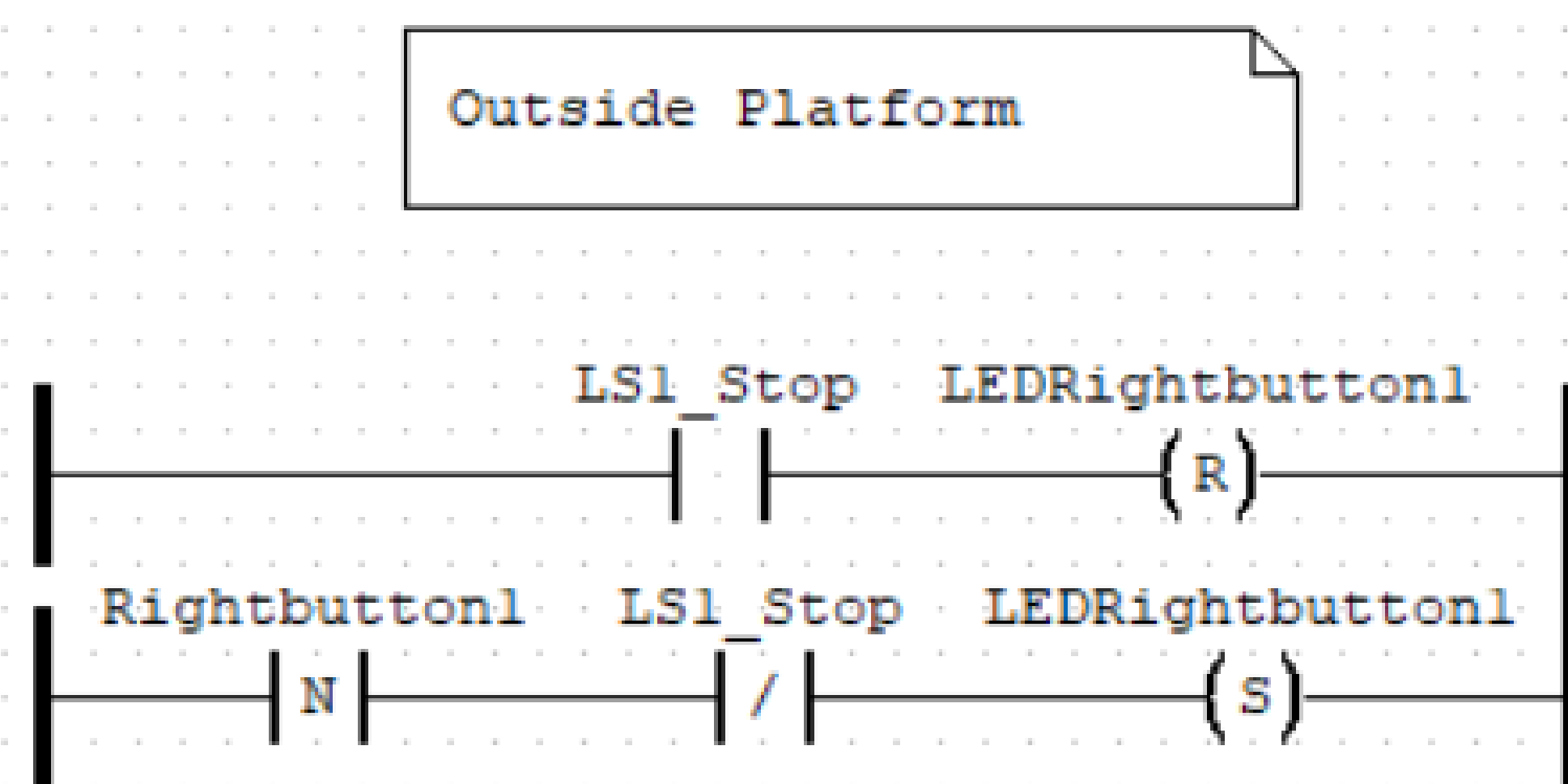
D2 Requirements

- The model is fully designed, integrated, and working.
- Button response, car motor activation/direction, car door operation, and sensor input are demonstrated.
- Elevator movement and floor wait time are optimized.

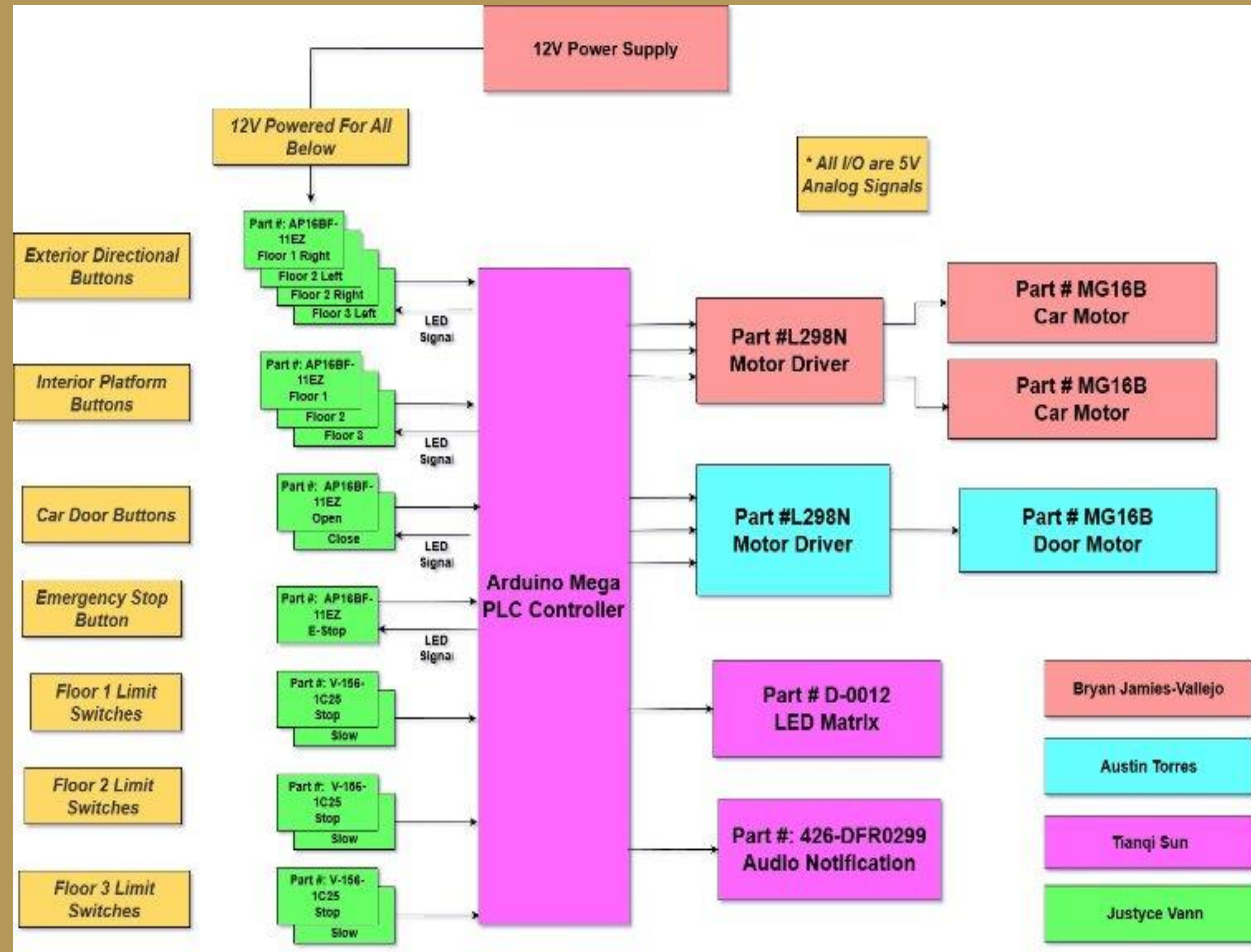
D2 Achievements

- All the requirements of D2 are achieved.
- The elevator functionalities are improved and optimized.
- Testing is performed to all the subsystems.
- Errors are fixed based on the test results.

OpenPLC Sample Code



Top Level Diagram

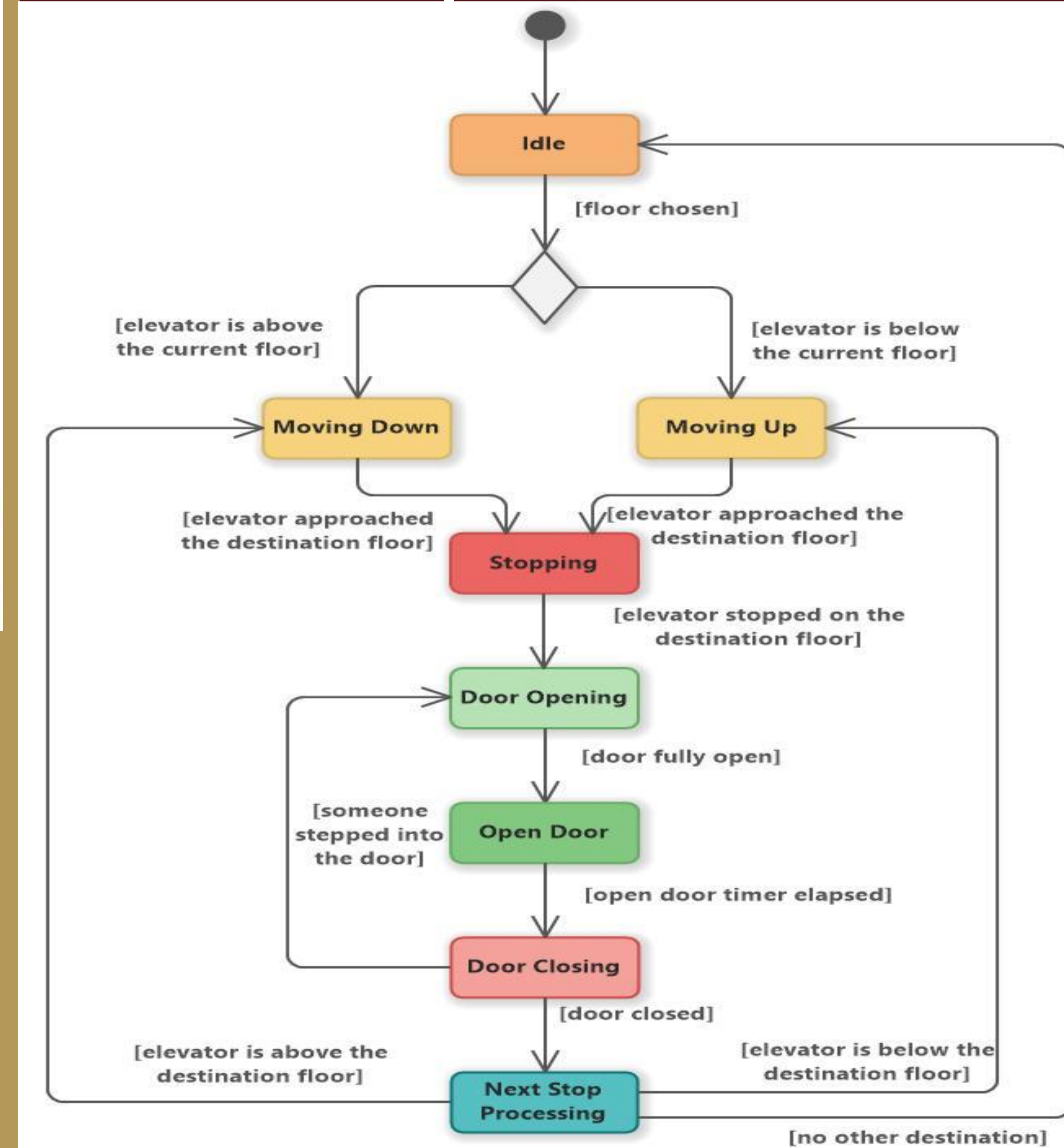


Meet The Team

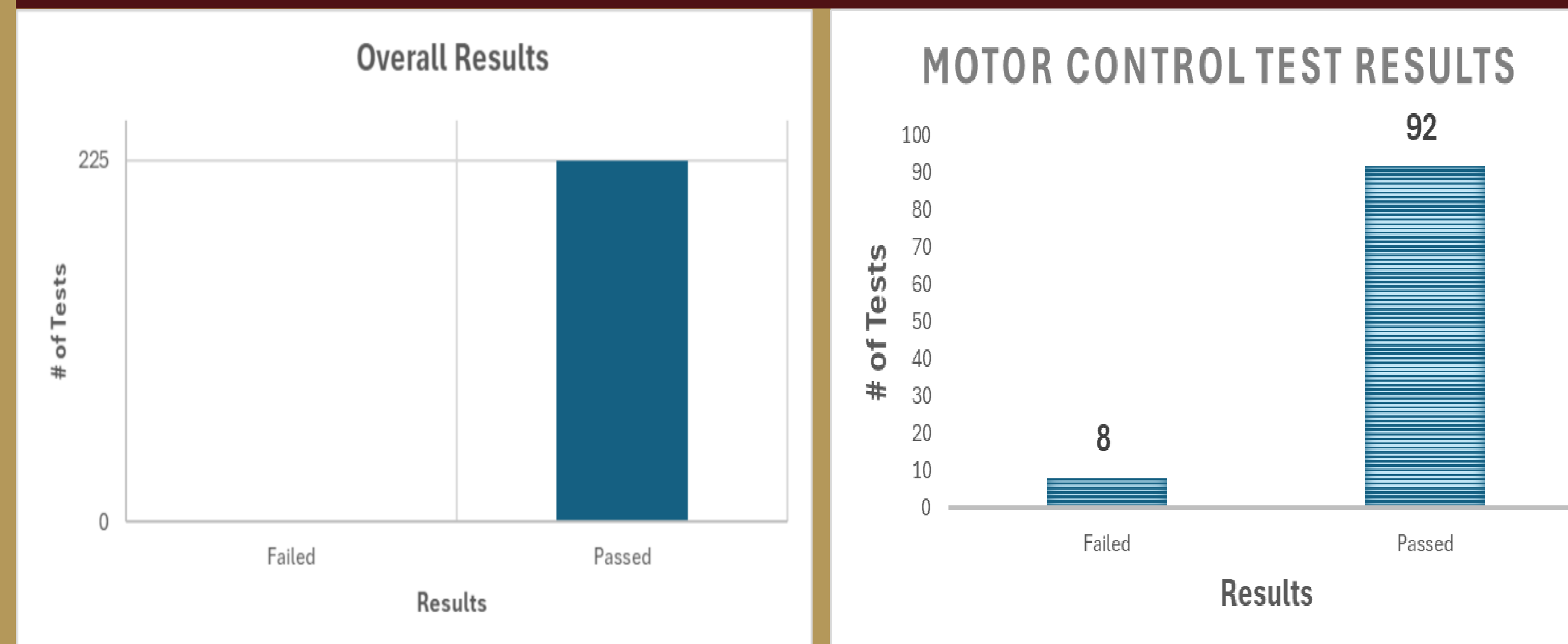


Justyce Vann (PM) Floor Selection	Bryan Jaimes Motor Control	Tianqi Sun User Interface	Austin Torres Door Operation
--	--------------------------------------	-------------------------------------	--

User Input Flow Chart



Results



Acknowledgements

- Sponsor: Jeff Stevens
- Faculty Advisor: Jeff Stevens