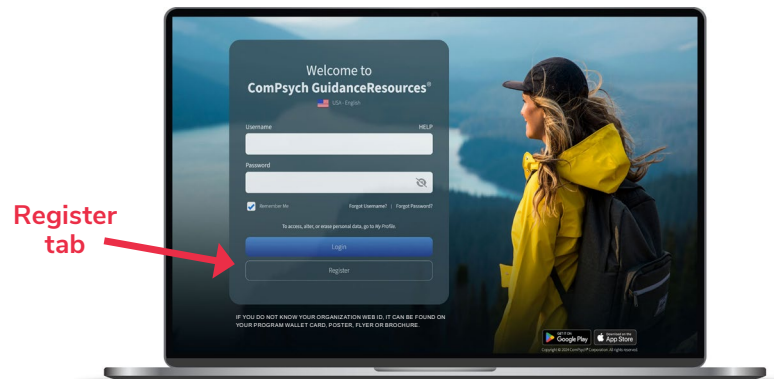


LOGGING INTO GUIDANCERESOURCES® ONLINE

FIRST-TIME USERS, FOLLOW THESE SIMPLE INSTRUCTIONS AND START EXPLORING THE RESOURCES OFFERED TO YOU ON GUIDANCERESOURCES® ONLINE.

- 1 Go to guidanceresources.com.
- 2 Once on the guidanceresources.com home page, click the Register tab.
- 3 Enter your Organization Web ID and click the Register button.
- 4 You will then be asked to enter a Username, your First Name and your Personal Email Address, as well as to create a Password.
Both your Username and Password can be anything you would like as long as they conform to the requirements listed on the page. Be sure to read the Terms of Use and click the check boxes to indicate your agreement to those terms and to the age verification.
- 5 Once you have completed registration, you will be asked to verify your email address.
- 6 After submitting your email, an authentication code will be sent to your address to verify your account.
Retrieve the code and enter it in the space provided.
- 7 When you've finished, click the Submit button at the bottom of the page. You should now be on the website.



FOR FUTURE LOGINS

YOU WILL ONLY NEED TO REMEMBER YOUR USERNAME AND PASSWORD.

- When you get to step 2 above, instead of clicking on the Register tab, use the Login section.
- Enter your User Name and Password.
- Click the Login button.
- This will take you directly to GuidanceResources® Online.

HERE WHEN YOU NEED US.

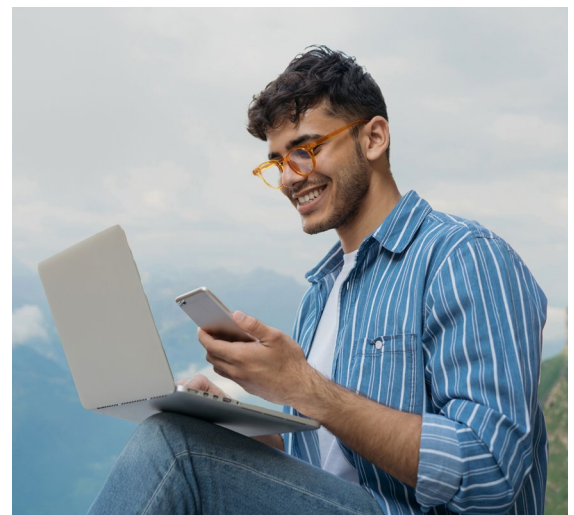
Call: 888.228.9831

TRS: Dial 711

Online: guidanceresources.com

App: GuidanceNowSM

Web ID: TXST



If you have any problems registering or logging into GuidanceResources® Online, email Member Services at memberservices@compsych.com.

TEXAS  STATE
UNIVERSITY®

MEMBER THE TEXAS STATE UNIVERSITY SYSTEM

Contact us anytime for confidential assistance.